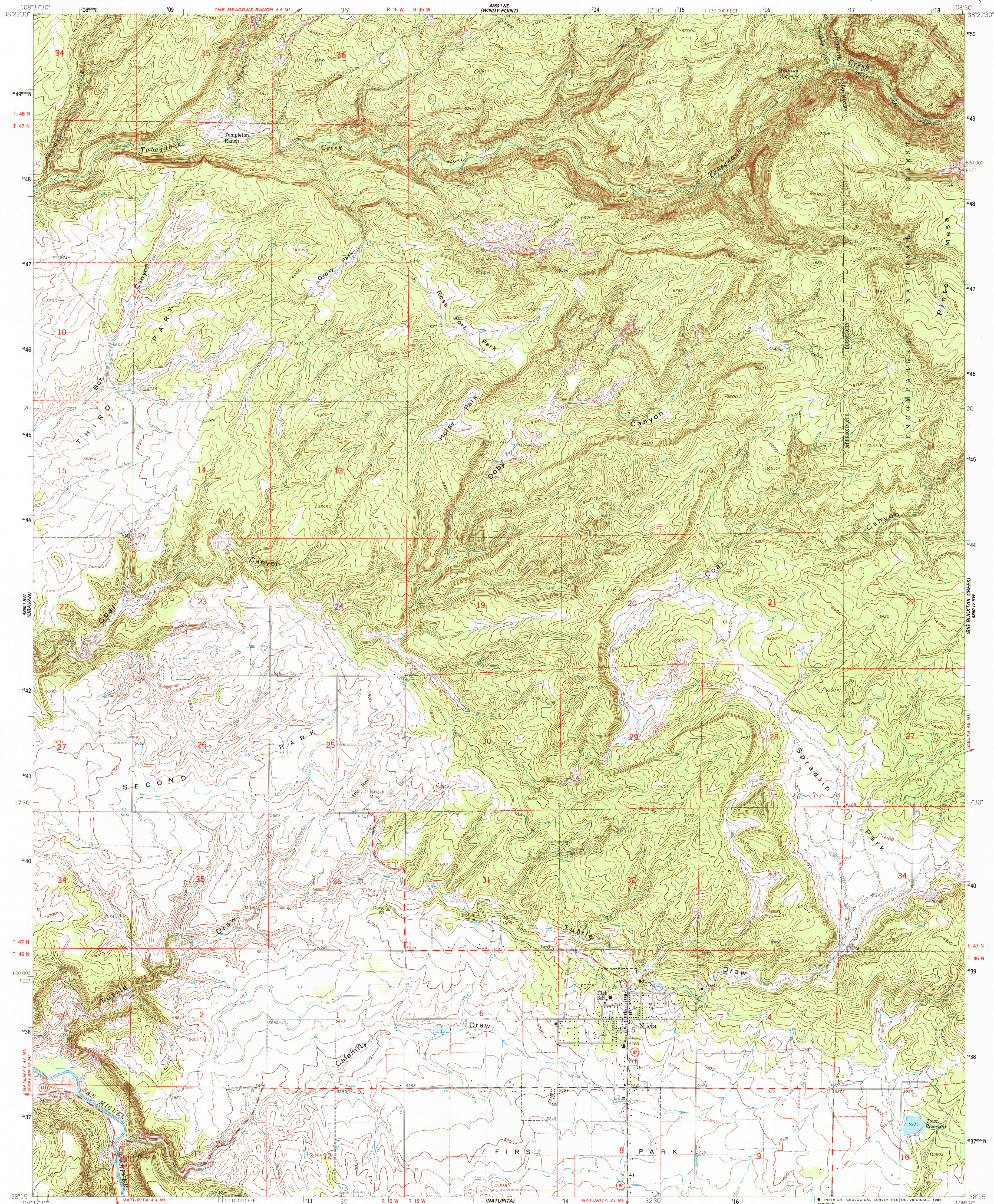


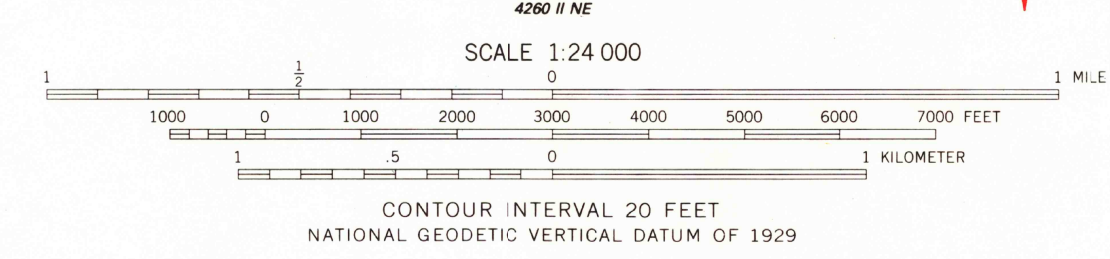
UNITED STATES  
DEPARTMENT OF THE INTERIOR  
GEOLOGICAL SURVEY

NUCLA QUADRANGLE  
COLORADO-MONTROSE CO.  
7.5 MINUTE SERIES (TOPOGRAPHIC)  
SE/4 NUCLA 15 QUADRANGLE

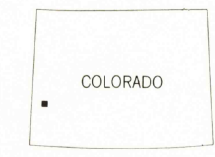


Maped, edited, and published by the Geological Survey  
Control by USGS and USC&GS  
Topography from aerial photographs by photogrammetric methods  
Aerial photographs taken 1956. Field check 1960  
Polyconic projection, 1927 North American Datum  
10,000-foot grid based on Colorado coordinate system,  
south zone  
1000-meter Universal Transverse Mercator grid ticks,  
zone 12, shown in blue  
Dashed land lines indicate approximate locations  
Land lines omitted in T. 48 N. R. 15 W. and in part  
of T. 47 N. R. 15 W. because of insufficient data  
Fine red dashed lines indicate selected fence and field lines  
where generally visible on aerial photographs  
This information is unchecked

To place on the predicted North American Datum 1983  
move the projection lines 4 meters north and  
57 meters east as shown by dashed corner ticks  
There may be private inholdings within the boundaries of  
the National or State reservations shown on this map



THIS MAP COMPLIES WITH NATIONAL MAP ACCURACY STANDARDS  
FOR SALE BY U.S. GEOLOGICAL SURVEY, DENVER, COLORADO 80225, OR RESTON, VIRGINIA 22092  
A FOLDER DESCRIBING TOPOGRAPHIC MAPS AND SYMBOLS IS AVAILABLE ON REQUEST



ROAD CLASSIFICATION  
Medium-duty ——— Light-duty ———  
Unimproved dirt ———  
State Route

NUCLA, COLO.  
SE/4 NUCLA 15 QUADRANGLE  
38108-C5-TF-024  
1960  
PHOTOINSPECTED 1979  
DMA 4260 I-SE-SERIES V877