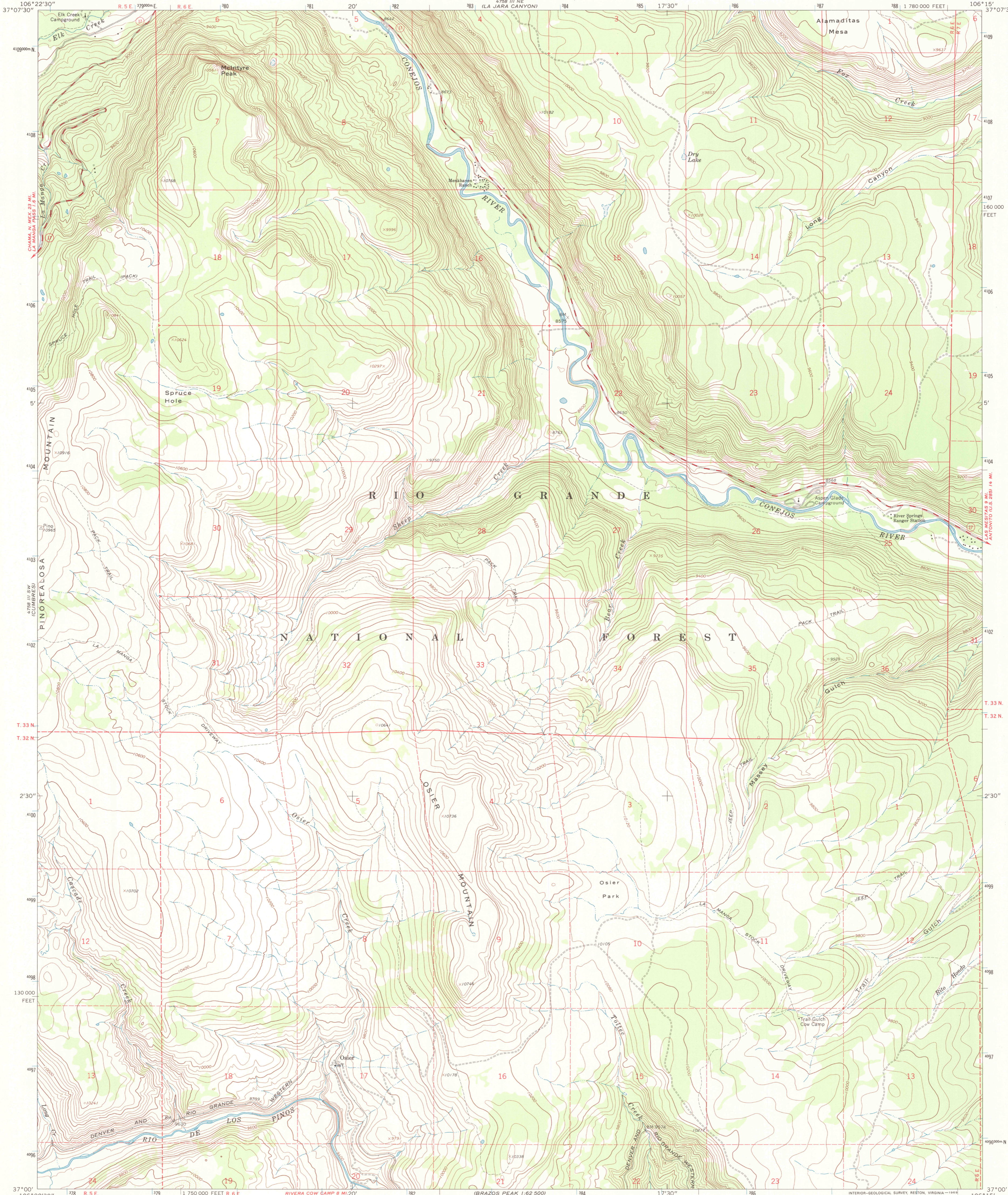


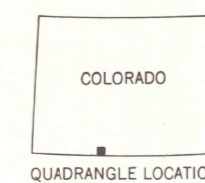
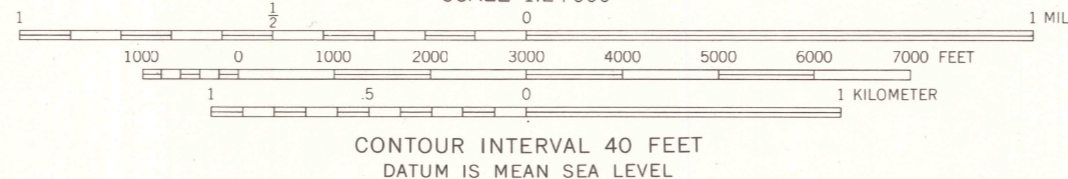
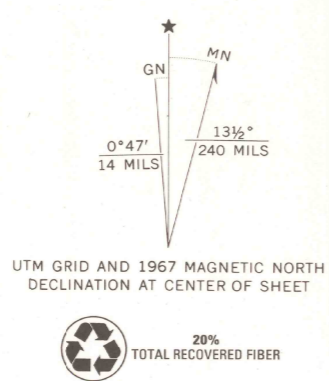


U.S. DEPARTMENT OF THE INTERIOR
U.S. GEOLOGICAL SURVEY

OSIER QUADRANGLE
COLORADO—CONEJOS CO.
7.5 MINUTE SERIES (TOPOGRAPHIC)



Mapped by the U. S. Forest Service
Edited and published by the Geological Survey
Control by USGS, USC&GS, and U. S. Forest Service
Topography by photogrammetric methods from aerial photographs taken 1960-1961. Field checked by USGS 1967
Polyconic projection. 1927 North American datum
10,000-foot grid based on Colorado coordinate system, south zone
1000-meter Universal Transverse Mercator grid ticks, zone 13, shown in blue
Certain land lines are omitted because of insufficient data



ROAD CLASSIFICATION
Medium-duty ——— Light-duty ———
Unimproved dirt - - - - -
Slate Route ○

RECEIVED
FEB 29 2000
USGS NWD
HISTORICAL MAP ARCHIVES

OSIER, COLO.
N3700—W10615/7.5
1967
AMS 4758 III SE—SERIES V887

THIS MAP COMPLIES WITH NATIONAL MAP ACCURACY STANDARDS
FOR SALE BY U.S. GEOLOGICAL SURVEY, P.O. BOX 25286, DENVER, COLORADO 80225
A FOLDER DESCRIBING TOPOGRAPHIC MAPS AND SYMBOLS IS AVAILABLE ON REQUEST

