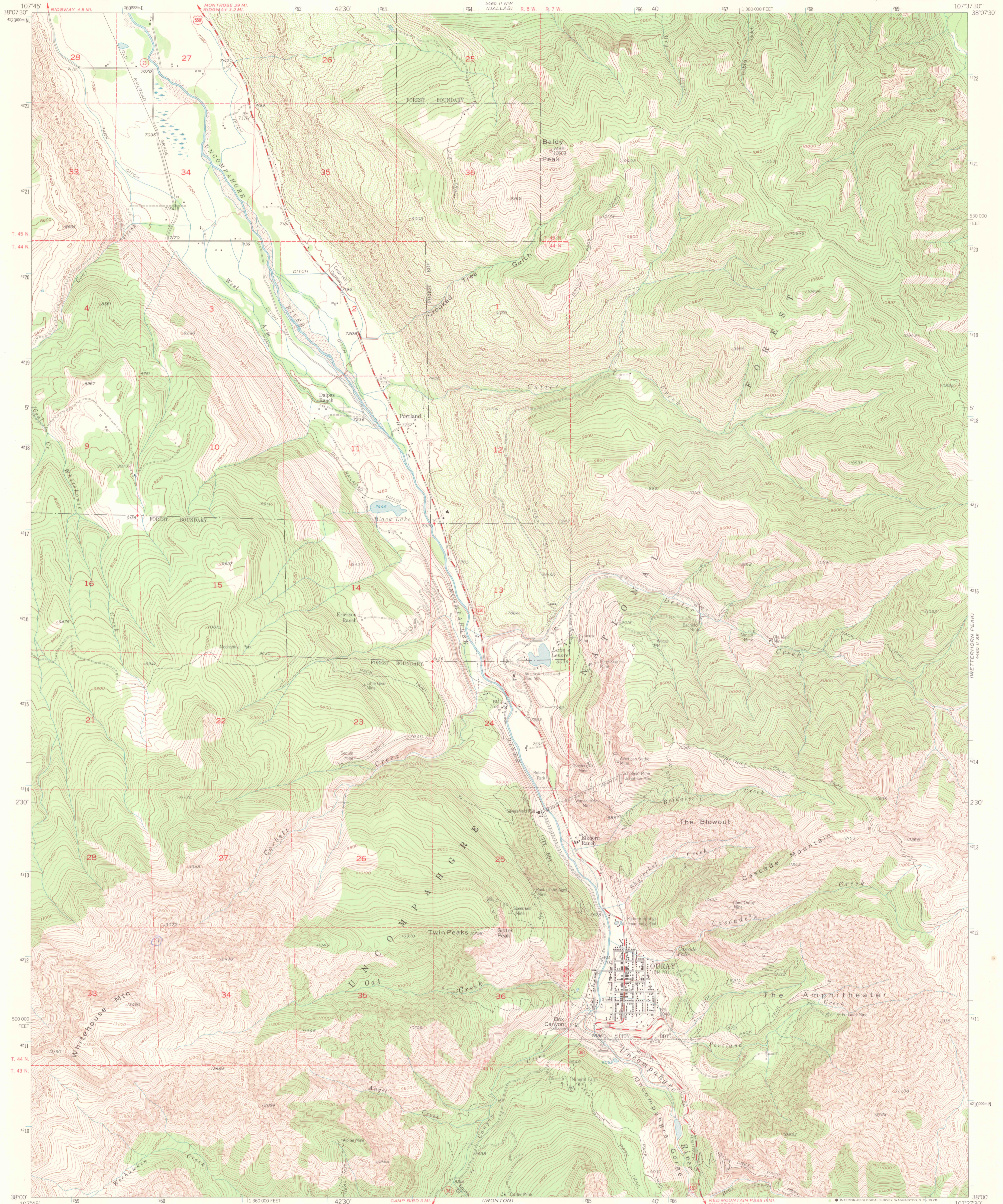
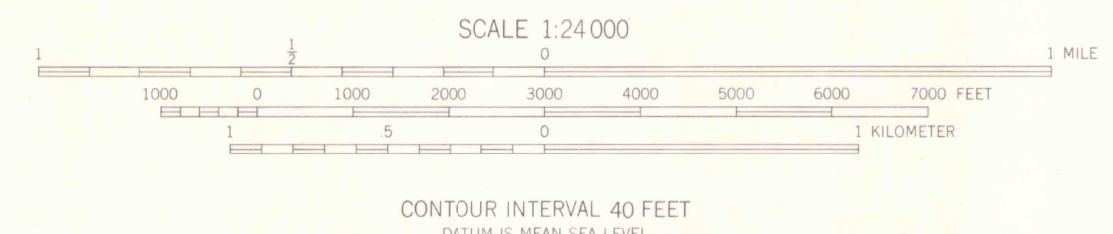
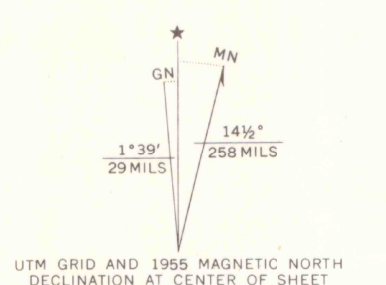


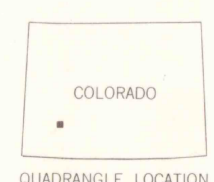
489' 11" NE  
COURTHOUSE MTN.



Maped, edited, and published by the Geological Survey  
Control by USGS and USC&GS  
Topography from aerial photographs by multiple methods  
Aerial photographs taken 1951. Field check 1955  
Polyconic projection. 1927 North American datum  
10,000-foot grid based on Colorado coordinate system,  
south zone  
Dashed land lines indicate approximate locations  
Land lines are omitted in T. 43 N.-Rs. 7 and 8 W. and  
Ts. 44 and 45 N.-R. 7 W. because of insufficient data  
Unchecked elevations are shown in brown  
1000-meter Universal Transverse Mercator grid ticks,  
zone 13, shown in blue



THIS MAP COMPLIES WITH NATIONAL MAP ACCURACY STANDARDS  
FOR SALE BY U. S. GEOLOGICAL SURVEY, DENVER, COLORADO 80225 OR WASHINGTON, D. C. 20242  
A FOLDER DESCRIBING TOPOGRAPHIC MAPS AND SYMBOLS IS AVAILABLE ON REQUEST



ROAD CLASSIFICATION  
Medium duty — Light duty  
Unimproved dirt — State Route  
U. S. Route — State Route

OURAY, COLO.  
SW 1/4 OURAY 15' QUADRANGLE  
N3800-W10737.5/7.5  
1955  
AMS 4460 II SW-SERIES V877

MAY 07 1996  
MAP ROOM  
ARTHUR LAKES LIBRARY  
COLORADO SCHOOL OF MINES

G 3700  
624  
64  
MAP ROOM



U16900094878  
ARRESTED SANTA FE  
20000000000

C2