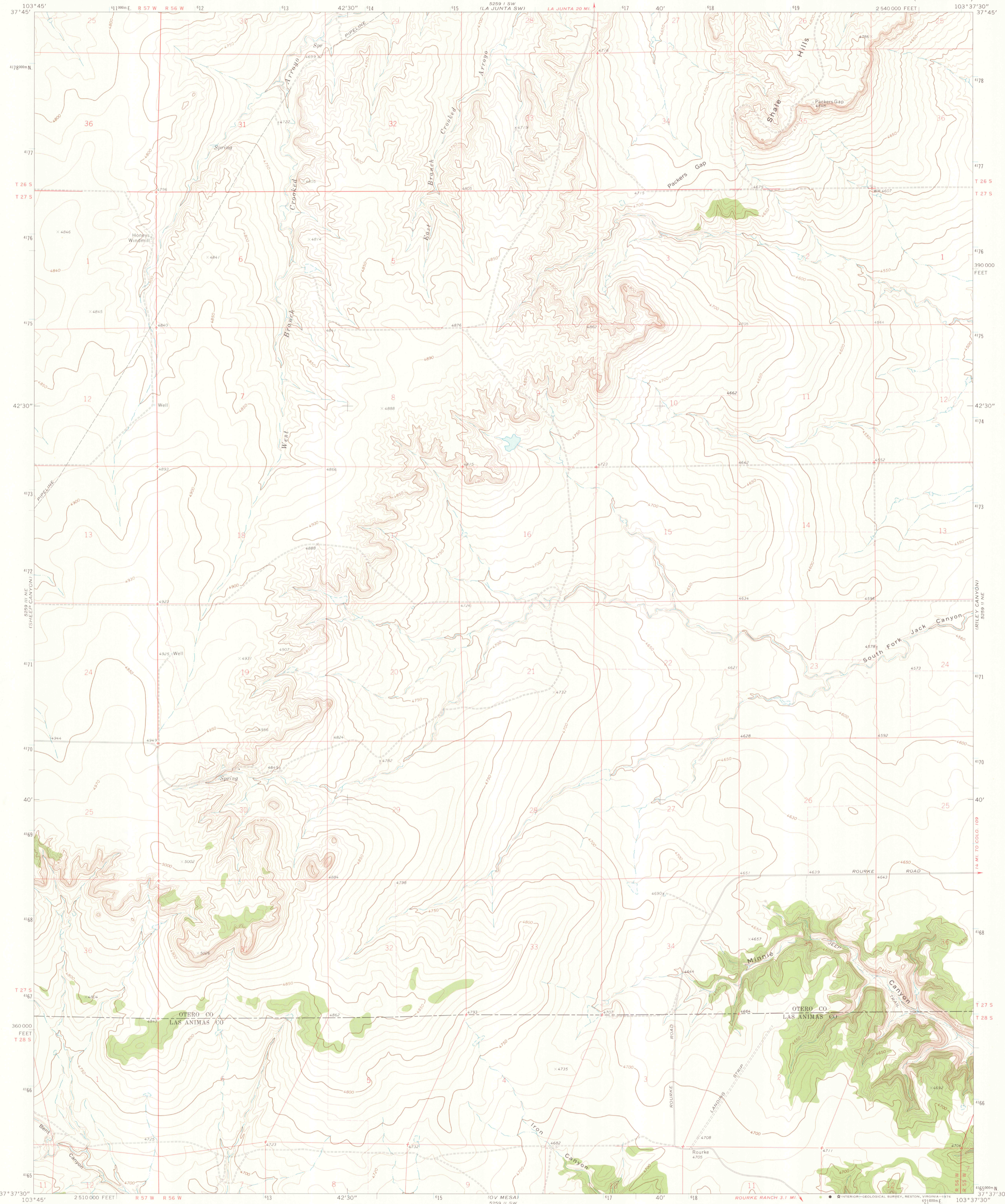
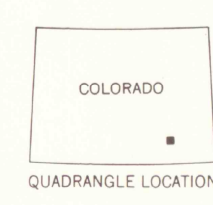
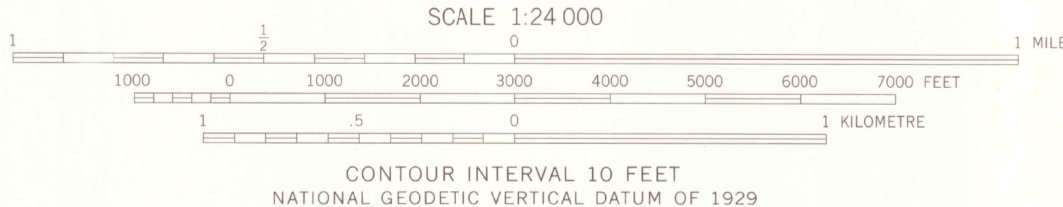
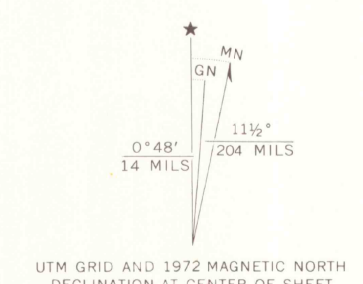


5259 I SW
(LA JUNTA SW)



Mapped, edited, and published by the Geological Survey
Control by USGS, NOS/NOAA, and U. S. Forest Service
Topography by photogrammetric methods from aerial
photographs taken 1971. Field checked 1972
Projection and 10,000-foot grid ticks: Colorado
coordinate system, south zone (Lambert conformal conic)
1000-metre Universal Transverse Mercator grid ticks,
zone 13, shown in blue. 1927 North American datum
Fine red dashed lines indicate selected fence lines



ROAD CLASSIFICATION

Primary highway, hard surface	Light-duty road, hard or improved surface
Secondary highway, hard surface	Unimproved road
○ Interstate Route	○ U. S. Route
	○ State Route

THIS MAP COMPLIES WITH NATIONAL MAP ACCURACY STANDARDS
FOR SALE BY U.S. GEOLOGICAL SURVEY, DENVER, COLORADO 80225, OR RESTON, VIRGINIA 22092
A FOLDER DESCRIBING TOPOGRAPHIC MAPS AND SYMBOLS IS AVAILABLE ON REQUEST

PACKERS GAP, COLO.
N3737.5-W10337.5/7.5

1972

AMS 5259 II NW—SERIES V877

LIBRARY USE ONLY