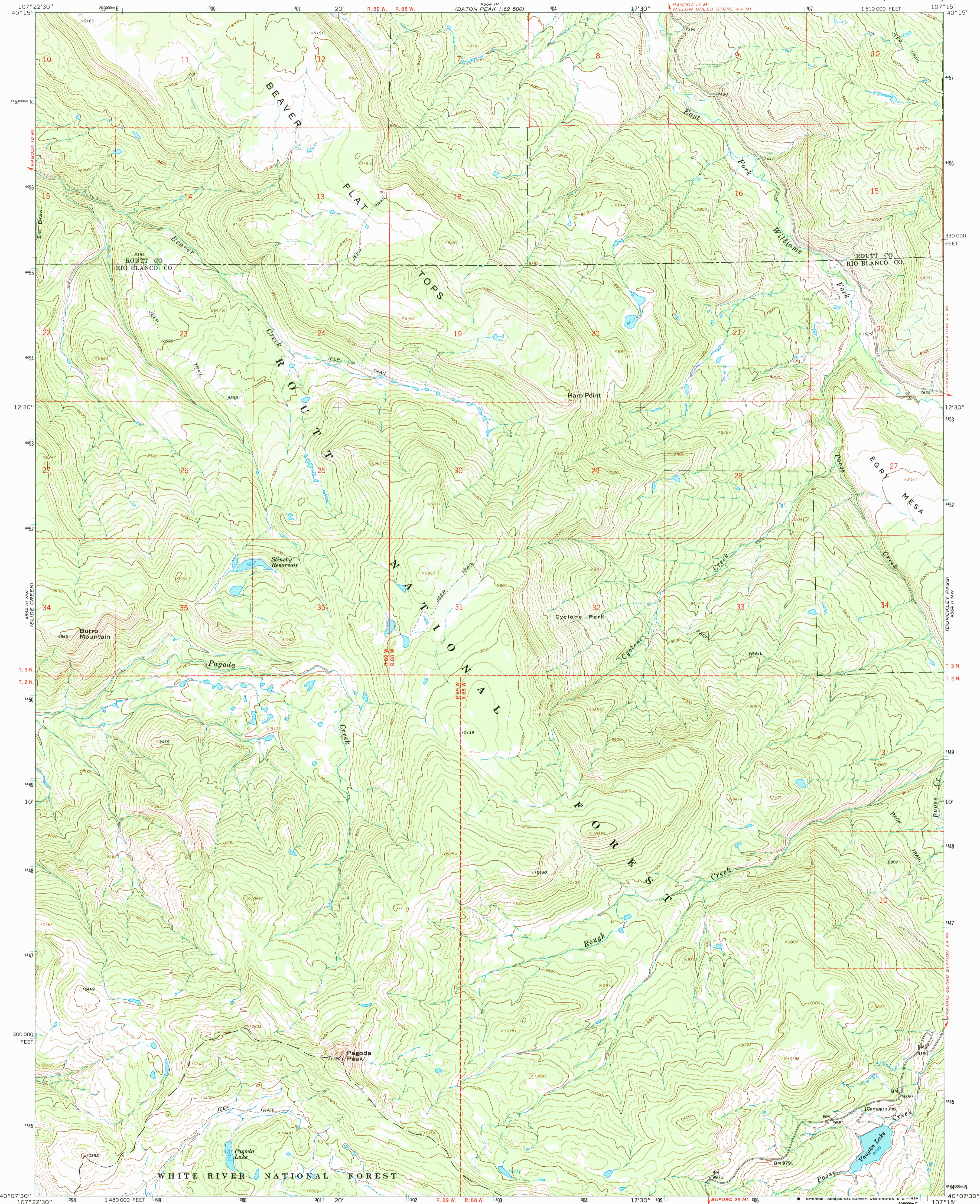
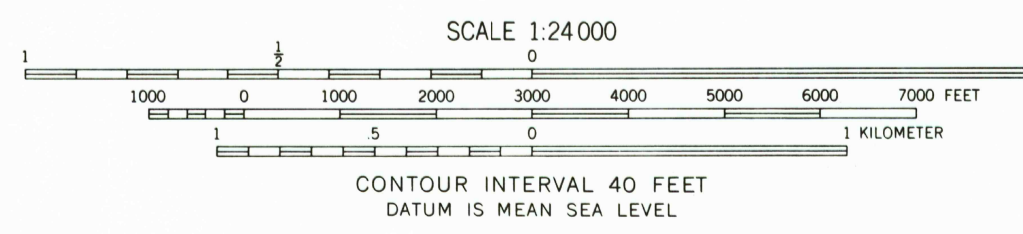
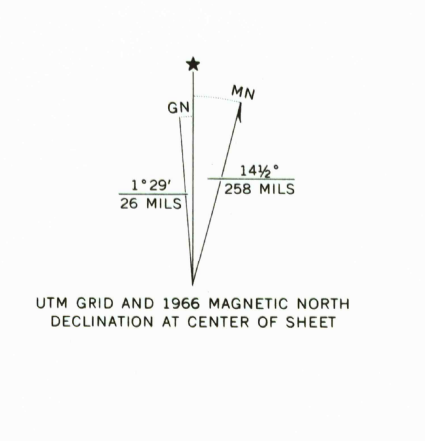


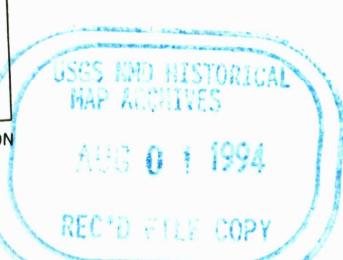
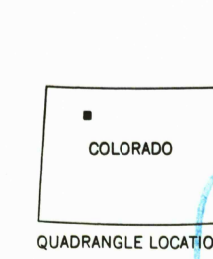
AMS 4564 III NE-1966
1:62,500



Mapped, edited, and published by the Geological Survey
Control by USGS and USC&GS
Topography by photogrammetric methods from aerial photographs taken 1965. Field checked 1966.
Polyconic projection. 1927 North American datum
10,000-foot grid based on Colorado coordinate system, north zone
1000-meter Universal Transverse Mercator grid ticks, zone 13, shown in blue
Fine red dashed lines indicate selected fence lines
Where omitted, land lines have not been established
Map photospected 1973
No major culture or drainage changes observed



THIS MAP COMPLIES WITH NATIONAL MAP ACCURACY STANDARDS
FOR SALE BY U.S. GEOLOGICAL SURVEY
DENVER, COLORADO 80225, OR RESTON, VIRGINIA 22092
A FOLDER DESCRIBING TOPOGRAPHIC MAPS AND SYMBOLS IS AVAILABLE ON REQUEST



ROAD CLASSIFICATION
Light-duty _____
Unimproved dirt - - - - -
PAGODA PEAK, COLO.
N4007.5-W10715/7.5
1966
PHOTOINSPECTED 1973
AMS 4564 III NE-SERIES V 877