

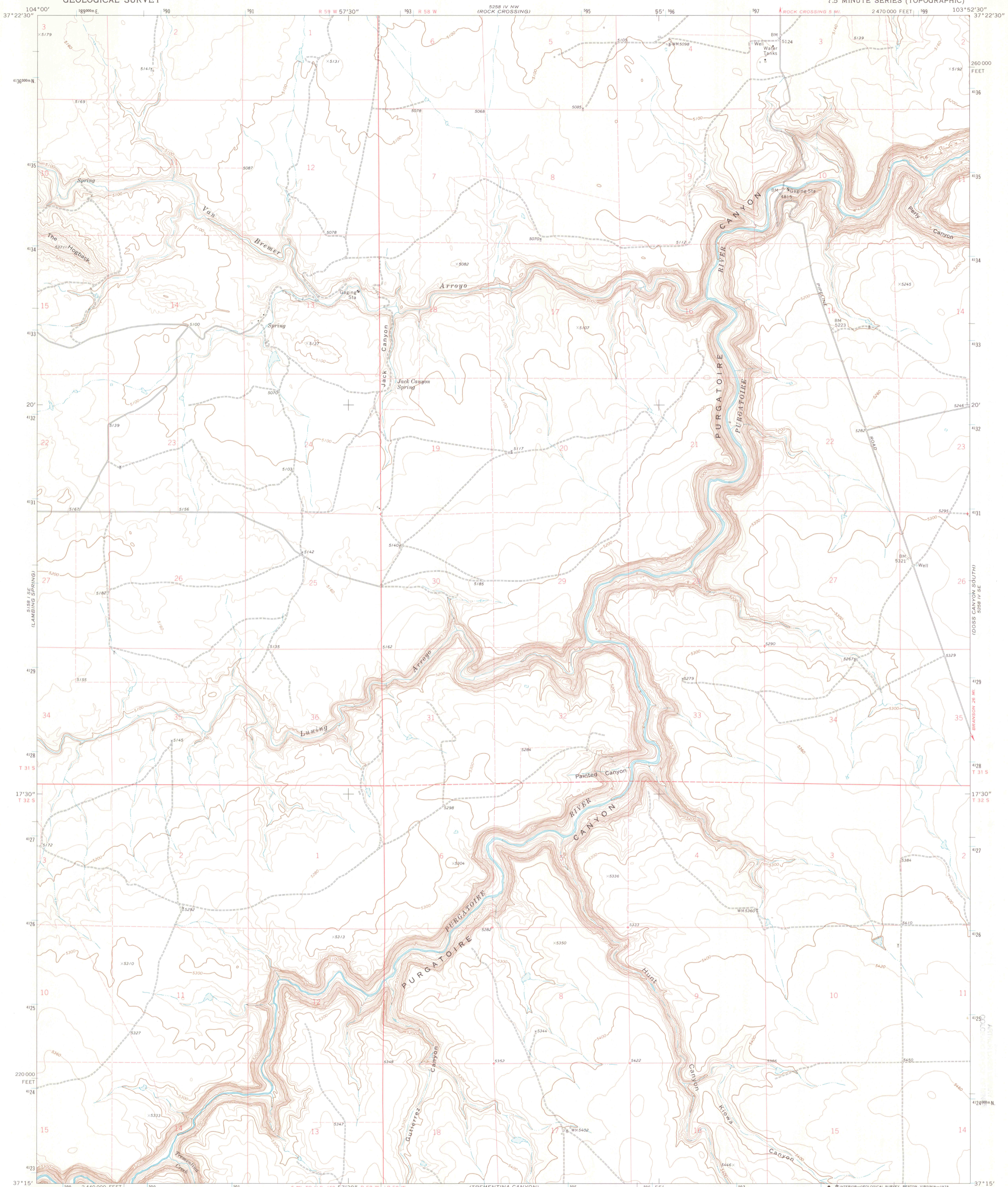
2.21/3: C71/P 148

SOUTHWEST MISSOURI STATE UNIVERSITY LIBRARY U. S. DEPOSITORY COPY

UNITED STATES DEPARTMENT OF THE INTERIOR GEOLOGICAL SURVEY

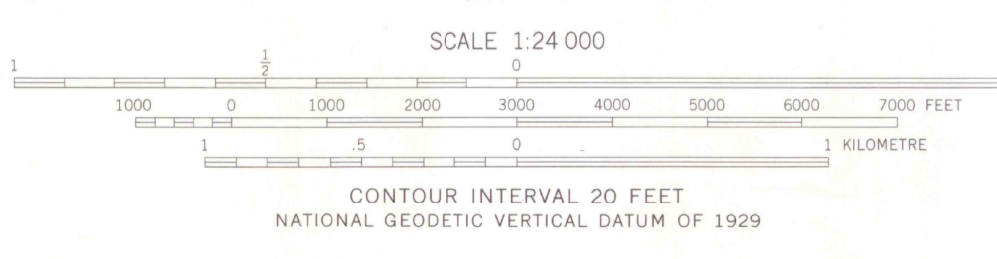
DEC 1 5 1975

PAINTED CANYON QUADRANGLE COLORADO-LAS ANIMAS CO. 7.5 MINUTE SERIES (TOPOGRAPHIC)



Mapped, edited, and published by the Geological Survey  
Control by USGS and NOS/NOAA  
Topography by photogrammetric methods from aerial photographs taken 1971. Field checked 1972  
Projection and 10,000-foot grid ticks: Colorado coordinate system, south zone (Lambert conformal conic) 1000-metre Universal Transverse Mercator grid ticks, zone 13, shown in blue. 1927 North American datum  
Fine red dashed lines indicate selected fence lines

**S. M. S. LIBRARY**



**SMSU MAP LIBRARY**  
DEFICE COPY  
COLORADO  
QUADRANGLE LOCATION

**ROAD CLASSIFICATION**  
Primary highway, hard surface  
Secondary highway, hard surface  
Light-duty road, hard or improved surface  
Unimproved road  
Interstate Route  
U. S. Route  
State Route

**G 3700**  
**s24**  
**G4**  
**MAP ROOM**

THIS MAP COMPLIES WITH NATIONAL MAP ACCURACY STANDARDS FOR SALE BY U.S. GEOLOGICAL SURVEY, DENVER, COLORADO 80225, OR RESTON, VIRGINIA 22092 A FOLDER DESCRIBING TOPOGRAPHIC MAPS AND SYMBOLS IS AVAILABLE ON REQUEST

PAINTED CANYON, COLO  
N3715-W10352.5/7.5  
1972  
AMS 5258 IV SW-SERIES V877

NOV 25 2003

FRANCHERA CREEK  
5258 IV SE

ROCK RANCHO  
5258 III NE

R.4310.015 LOWLANDS (A) (H) 9.21/3/14 72