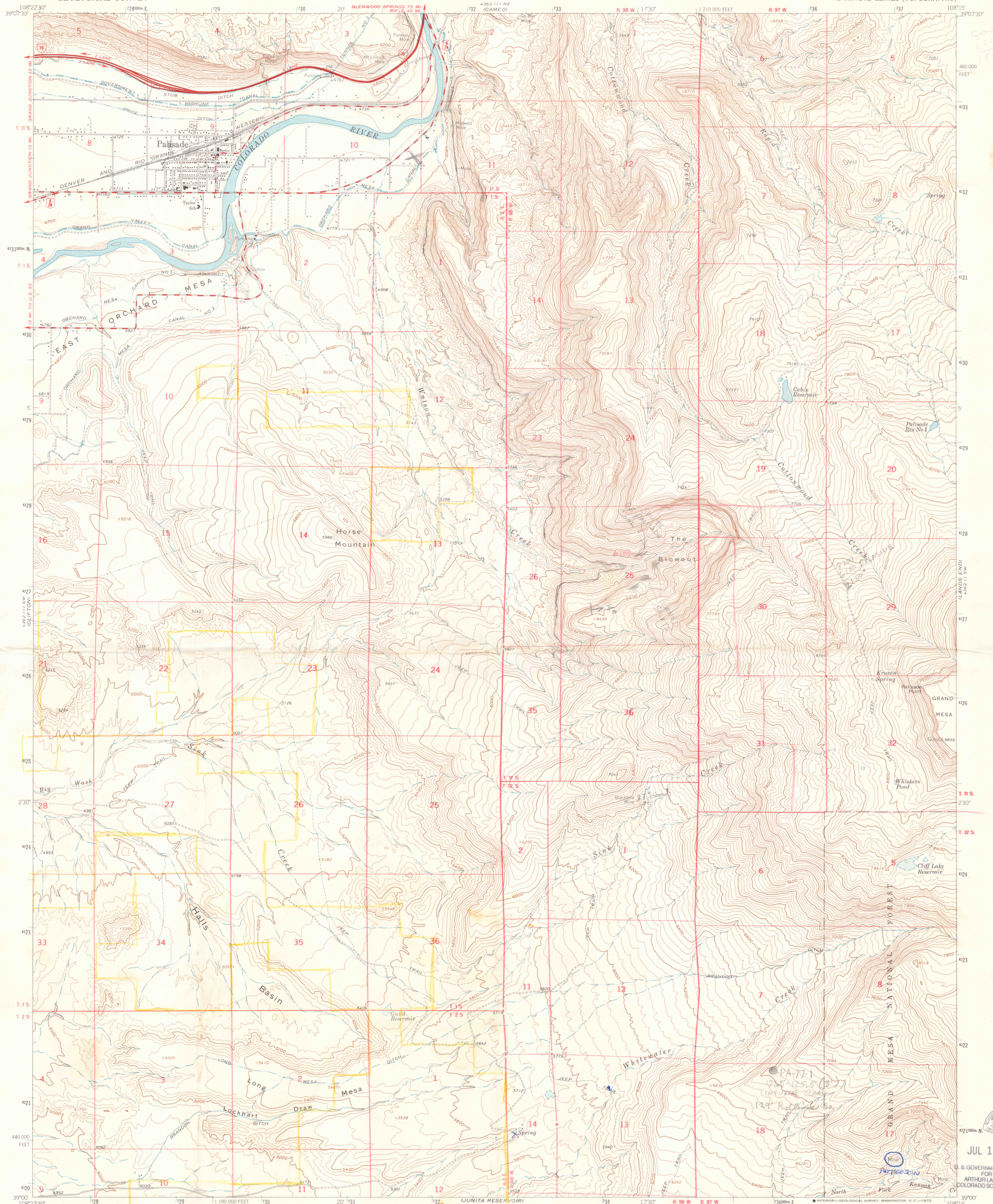


UNITED STATES  
DEPARTMENT OF THE INTERIOR  
GEOLOGICAL SURVEY

PALISADE QUADRANGLE  
COLORADO-MESA CO.  
7.5 MINUTE SERIES (TOPOGRAPHIC)

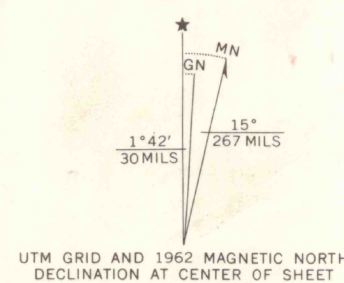


Mapped, edited, and published by the Geological Survey

Control by USGS, USC&GS, and U.S. Bureau of Reclamation

Topography by photogrammetric methods from aerial photographs taken 1956. Field checked 1962

Polyconic projection. 1927 North American datum  
10,000-foot grid based on Colorado coordinate system, central zone  
1000-meter Universal Transverse Mercator grid ticks,  
zone 12, shown in blue



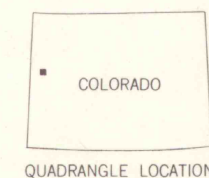
SCALE 1:24,000

1 000 0 1000 2000 3000 4000 5000 6000 7000 FEET

1 0 1 2 3 4 5 6 7 8 9 10 KILOMETER

CONTOUR INTERVAL 40 FEET  
DOTTED LINES REPRESENT 20-FOOT CONTOURS  
DATUM IS MEAN SEA LEVEL

ROAD CLASSIFICATION  
Heavy-duty ——— Light-duty ———  
Medium-duty ——— Unimproved dirt ———  
Interstate Route U.S. Route State Route



OFFICE COPY  
LIBRARY USE ONLY

COLORADO SCHOOL OF MINES LIBRARY  
118800 3758343

PALISADE, COLO.

N3900-W10815/7.5

1962

AMS 4362 111 SE-SERIES V877

JUL 10 1999

U.S. GOVERNMENT DEPOSITORY

FOR MAPS

ARTHUR LAKES LIBRARY

COLORADO SCHOOL OF MINES

39°00' 108°15'

INDIAN POINT

W10815/7.5

637001 US

624 C1 US

.G4 W/D

MAP ROOM