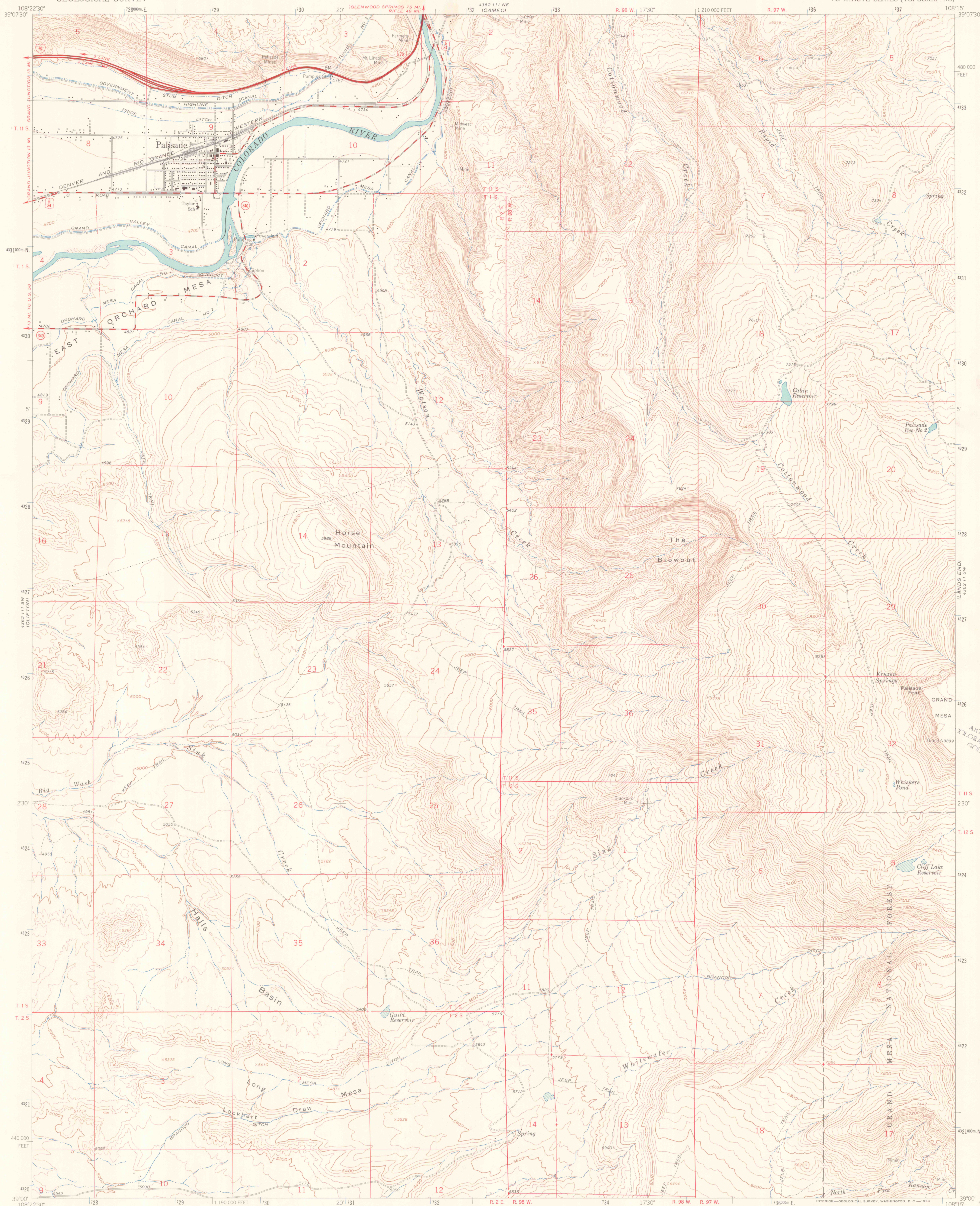


UNITED STATES
DEPARTMENT OF THE INTERIOR
GEOLOGICAL SURVEY

PALISADE QUADRANGLE
COLORADO-MESA CO.
7.5 MINUTE SERIES (TOPOGRAPHIC)



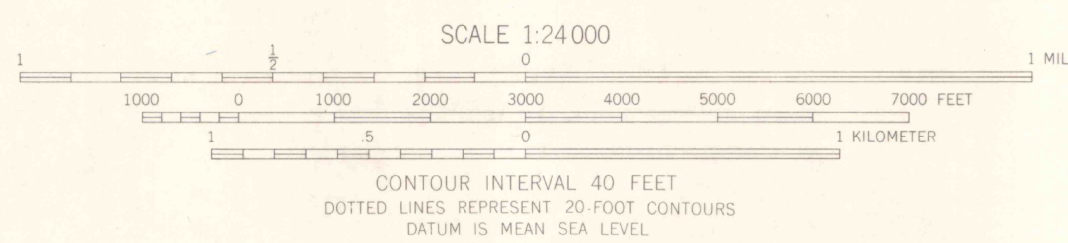
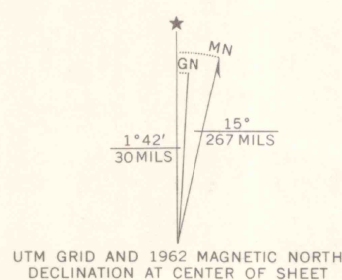
Mapped, edited, and published by the Geological Survey

Control by USGS, USC&GS, and U.S. Bureau of Reclamation

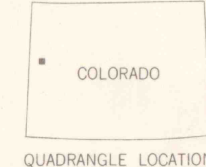
Topography by photogrammetric methods from aerial

photographs taken 1956. Field checked 1962

Polyconic projection. 1927 North American datum
10,000-foot grid based on Colorado coordinate system, central zone
1000-meter Universal Transverse Mercator grid ticks,
zone 12, shown in blue



FOR SALE BY U.S. GEOLOGICAL SURVEY, DENVER 25, COLORADO OR WASHINGTON 25, D.C.
A FOLDER DESCRIBING TOPOGRAPHIC MAPS AND SYMBOLS IS AVAILABLE ON REQUEST



ROAD CLASSIFICATION
Heavy-duty ——— Light-duty ———
Medium-duty ——— Unimproved dirt ———
Interstate Route U.S. Route State Route



PALISADE, COLO.
N3900-W10815/7.5

1962

AMS 4362 111 SE-SERIES W877

ARTHUR LAKES LIBRARY
COLORADO SCHOOL OF MINES
GOLDEN, COLORADO

LIBRARY USE ONLY

OFFICE USE ONLY

G
3701
C222
s24
U5