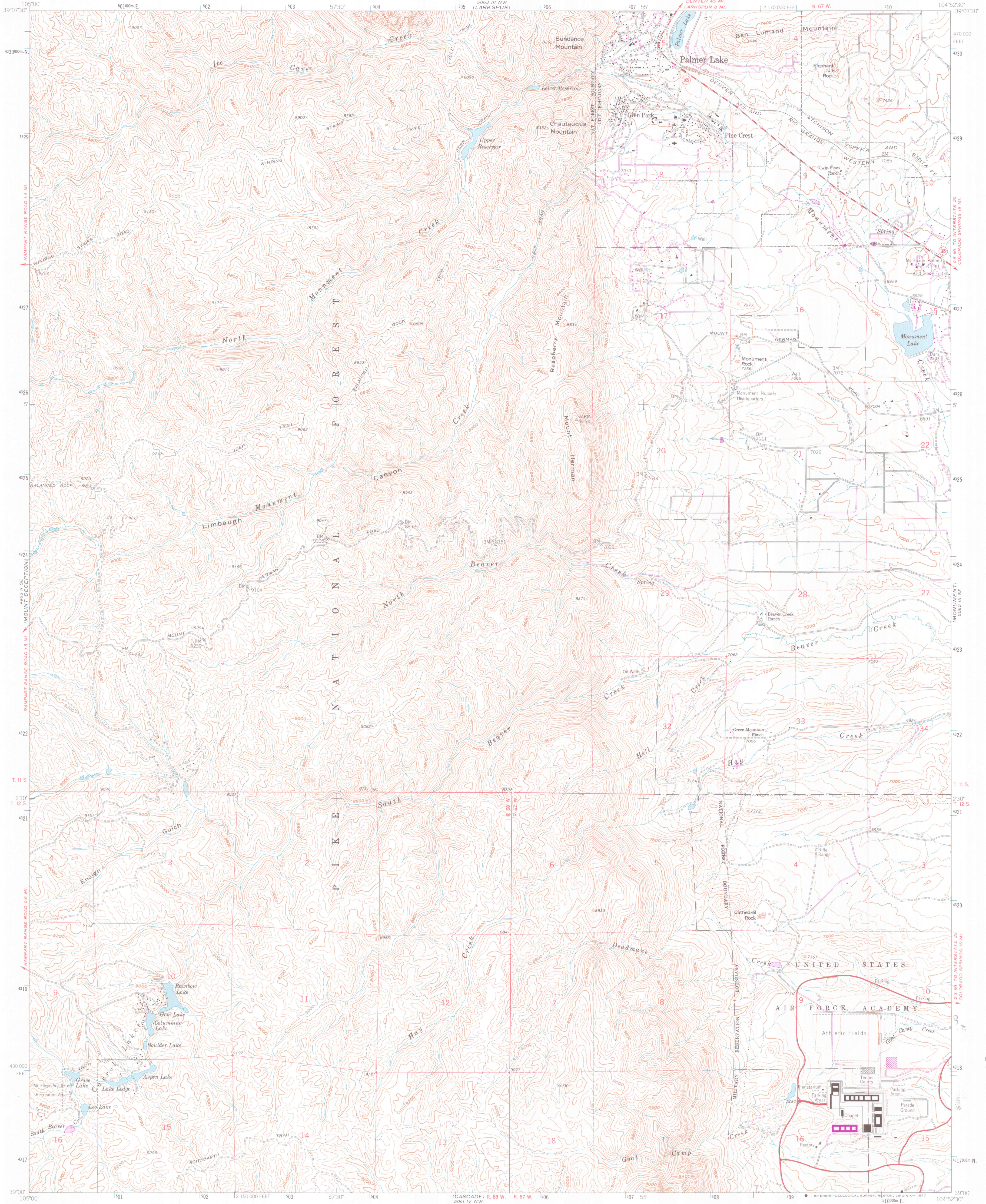


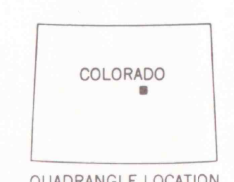
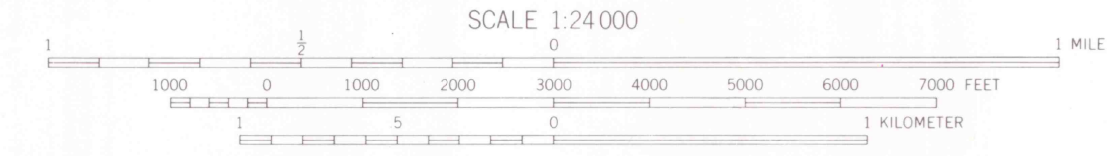
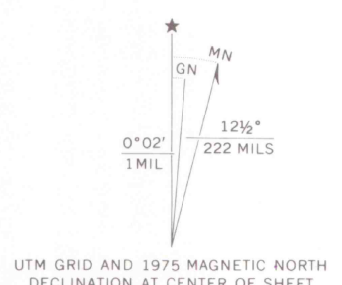
I 19.21/3 = C71/P173

UNITED STATES
DEPARTMENT OF THE INTERIOR
GEOLOGICAL SURVEY

PALMER LAKE QUADRANGLE
COLORADO-EL PASO CO.
7.5 MINUTE SERIES (TOPOGRAPHIC)



Mapped, edited, and published by the Geological Survey
Control by USGS and NOS/NOAA
Topography by photogrammetric methods from aerial photographs taken 1953. Field checked 1954. Revised from aerial photographs taken 1960. Field checked 1961.
Polyconic projection. 1927 North American datum. 10,000-foot grid based on Colorado coordinate system, central zone 1000-meter Universal Transverse Mercator grid ticks, zone 13, shown in blue.
Fine red dashed lines indicate selected fence and field lines where generally visible on aerial photographs. This information is un-checked. Certain land lines are omitted because of insufficient data.
Revisions shown in purple compiled from aerial photographs taken 1969 and 1975. This information not field checked.



SOUTHWEST MISSOURI STATE UNIVERSITY LIBRARY
U. S. DEPOSITORY COPY
APR 20 1970

ROAD CLASSIFICATION
Heavy-duty ——— Light-duty ———
Medium-duty ——— Unimproved dirt ———
○ State Route

PALMER LAKE, COLO.
N3900-W10452.5/7.5
1961
PHOTOREVISED 1969 AND 1975
AMS 5062 III SW-SERIES V877

THIS MAP COMPLIES WITH NATIONAL MAP ACCURACY STANDARDS
FOR SALE BY U. S. GEOLOGICAL SURVEY, DENVER, COLORADO 80225, OR RESTON, VIRGINIA 22092
A FOLDER DESCRIBING TOPOGRAPHIC MAPS AND SYMBOLS IS AVAILABLE ON REQUEST

G-4310/L6/P173L/24/19.21/3/1075

NOV 25 2003

WOODLAND PARK

TRIFLEVIEW

G 378
s24 4310
G4 s24
MAP ROOM