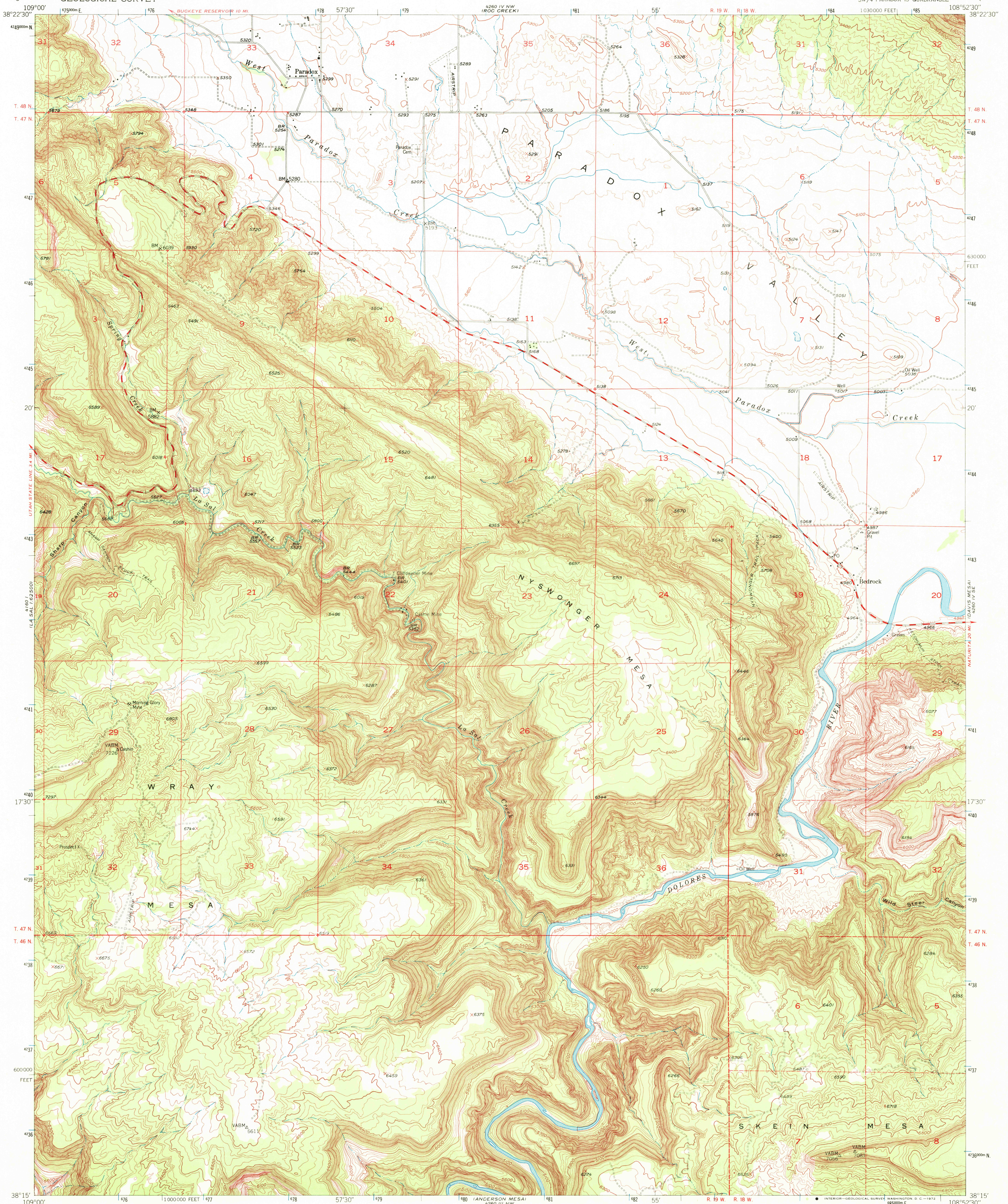
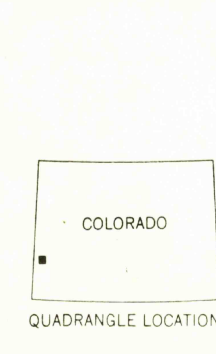
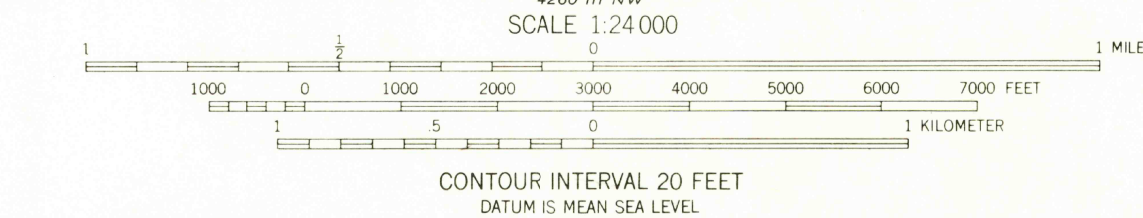
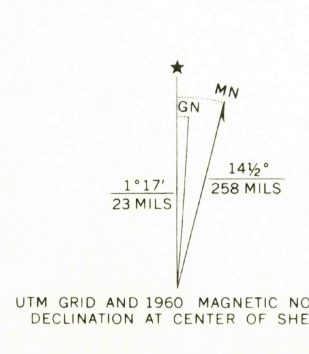


UNITED STATES
DEPARTMENT OF THE INTERIOR
GEOLOGICAL SURVEY

PARADOX QUADRANGLE
COLORADO-MONTROSE CO.
7.5 MINUTE SERIES (TOPOGRAPHIC)
SW/4 PARADOX 15 QUADRANGLE



Maped, edited, and published by the Geological Survey
Control by USGS and USC&GS
Topography from aerial photographs by photogrammetric methods
Aerial photographs taken 1947. Field checked 1948. Revised 1960
Polyconic projection. 1927 North American datum
10,000-foot grid based on Colorado coordinate system,
south zone.
1000-meter Universal Transverse Mercator grid ticks,
zone 12, shown in blue
Dashed land lines indicate approximate location
Land lines unsurveyed in parts of Ts. 46 and 47 N.-Rs. 18 and 19 W.



ROAD CLASSIFICATION
Medium-duty ——— Light-duty ———
Unimproved dirt ———
OCT 1 1972
PARADOX, COLO.
SW/4 PARADOX 15 QUADRANGLE
N3815-W10852 5/7.5
1960
AMS 4260 IV SW-SERIES V877

THIS MAP COMPLIES WITH NATIONAL MAP ACCURACY STANDARDS
FOR SALE BY U. S. GEOLOGICAL SURVEY, DENVER, COLORADO 80225, OR WASHINGTON, D. C. 20242
A FOLDER DESCRIBING TOPOGRAPHIC MAPS AND SYMBOLS IS AVAILABLE ON REQUEST

2685