

78° 11' NE
BUFFALO PEAK



U.S. DEPARTMENT OF THE INTERIOR
U.S. GEOLOGICAL SURVEY

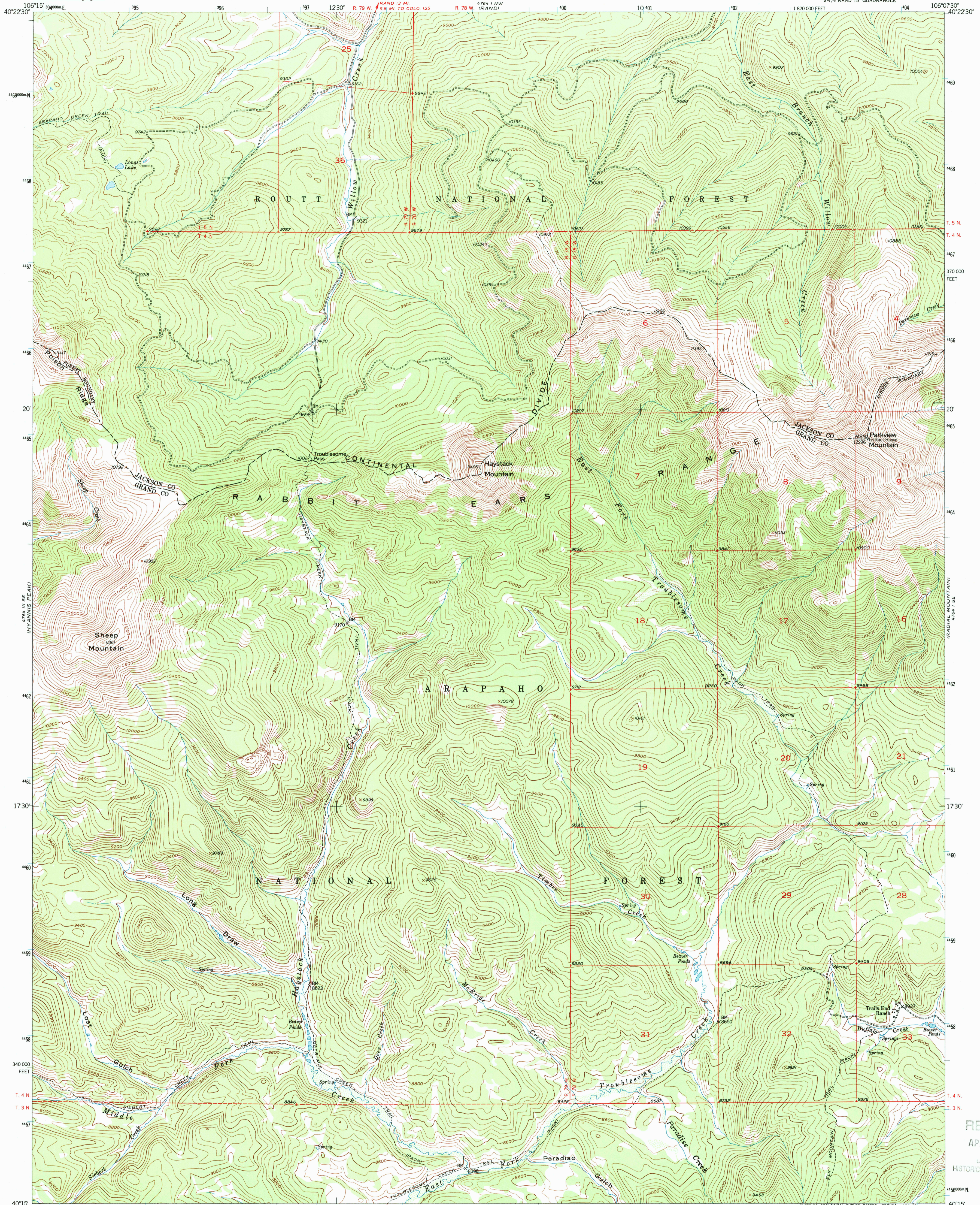
PARKVIEW MOUNTAIN QUADRANGLE

COLORADO

7.5 MINUTE SERIES (TOPOGRAPHIC)

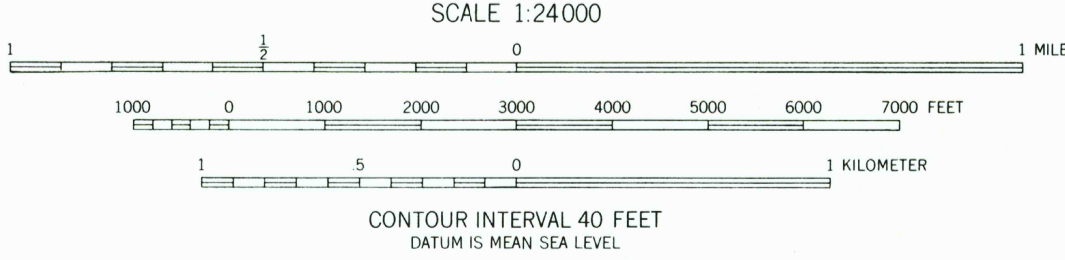
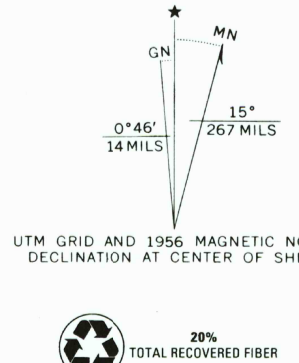
SW 1/4 RAND 15' QUADRANGLE

78° 11' NE
CREEK RANG



RECEIVED
APR 30 2001
HISTORICAL MAP ARCHIVES

Mapped, edited, and published by the Geological Survey as part of the Department of the Interior program for the development of the Missouri River Basin
Control by USGS and USC&GS
Topography from aerial photographs by multiplex methods
Aerial photographs taken 1952. Field check 1956
Polyconic projection. 1927 North American datum
10,000-foot grid based on Colorado coordinate system, north zone
1000-meter Universal Transverse Mercator grid ticks, zone 13, shown in blue
Dashed land lines indicate approximate locations
Land lines are omitted in T. 3 N., R. 78 and 79 W., T. 4 N., R. 79 W., T. 5 N., R. 78 W., and in parts of T. 5 N., R. 79 W. because of insufficient data



ROAD CLASSIFICATION
Light-duty ——— Unimproved dirt - - - - -

PARKVIEW MOUNTAIN, COLO.
SW 1/4 RAND 15' QUADRANGLE
N4015-W10607.5/7.5
1956
AMS 4764 1 SW-SERIES V877



ISBN 0-607-12574-8
9 1780607 12574 0