

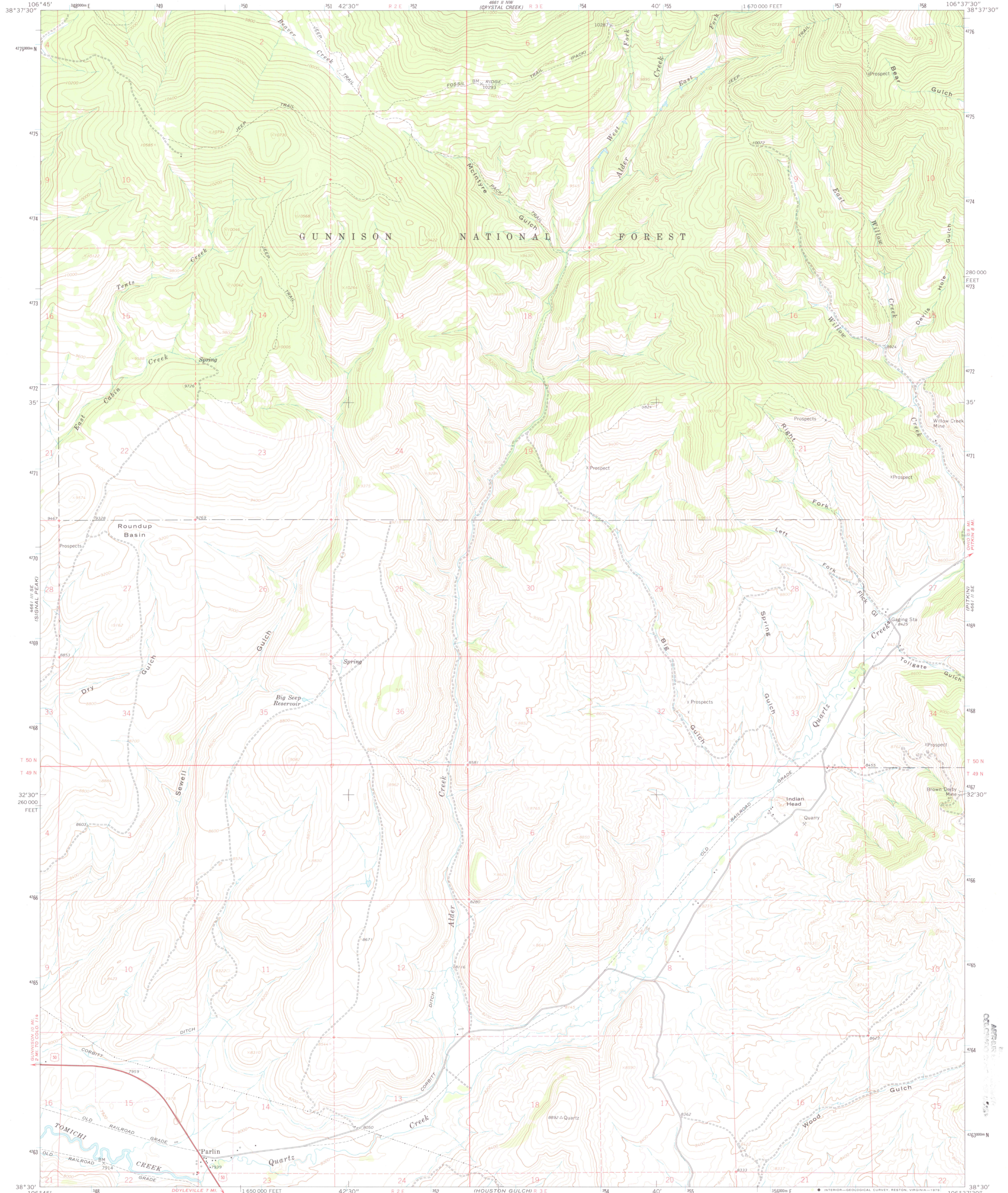
4661 III SE
(ALMOND)

UNITED STATES
DEPARTMENT OF THE INTERIOR
GEOLOGICAL SURVEY

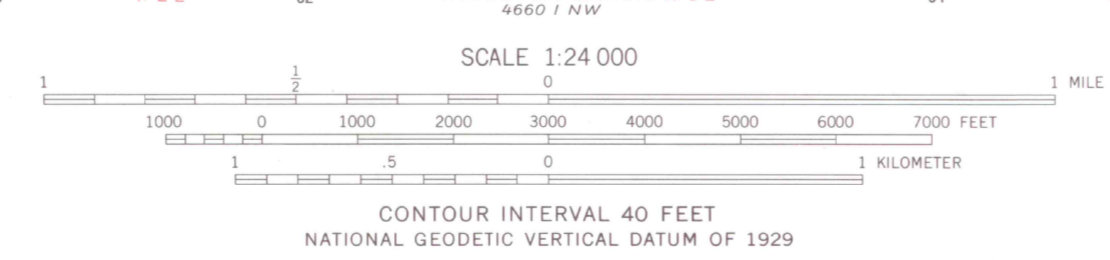
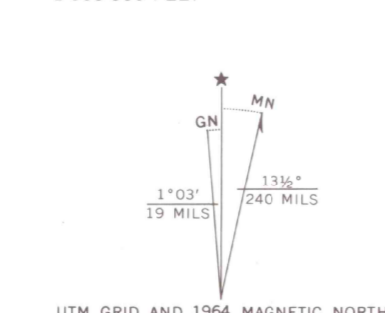


PARLIN QUADRANGLE
COLORADO—GUNNISON CO.
7.5 MINUTE SERIES (TOPOGRAPHIC)

4661 III NE
(FAIRVIEW PEAK)



Mapped, edited, and published by the Geological Survey
in cooperation with State of Colorado agencies
Control by USGS and USC&GS
Topography by photogrammetric methods from aerial
photographs taken 1962. Field checked 1964
Polyconic projection. 1927 North American datum
10,000-foot grid based on Colorado coordinate system, central zone
1000-meter Universal Transverse Mercator grid ticks,
zone 13, shown in blue
Fine red dashed lines indicate selected fence lines
There may be private inholdings within the boundaries of the
National or State reservations shown on this map



ROAD CLASSIFICATION
Heavy-duty ——— Light-duty ———
Unimproved dirt - - - - -
U.S. Route □

THIS MAP COMPLIES WITH NATIONAL MAP ACCURACY STANDARDS
FOR SALE BY U.S. GEOLOGICAL SURVEY, DENVER, COLORADO 80225, OR RESTON, VIRGINIA 22092
A FOLDER DESCRIBING TOPOGRAPHIC MAPS AND SYMBOLS IS AVAILABLE ON REQUEST

COLORADO
QUADRANGLE LOCATION

PARLIN, COLO.
N3830—W10637.5/7.5
1964

G 3700
662
C4
MAP ROOM

DMA 4661 II SW—SERIES V877
Winchell Library of Geology

FEB 17 2009

OFFICE COPY
LIBRARY USE ONLY