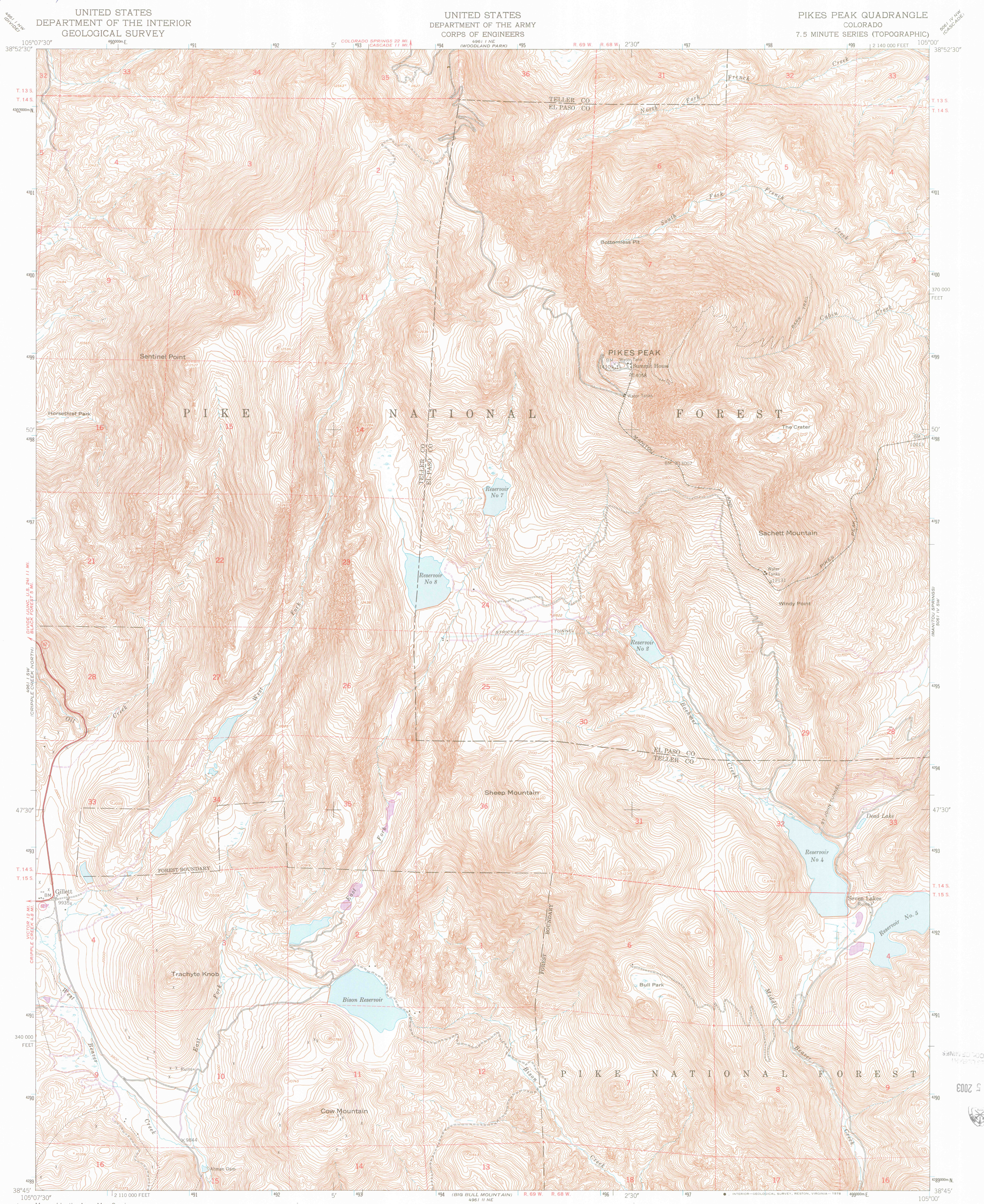
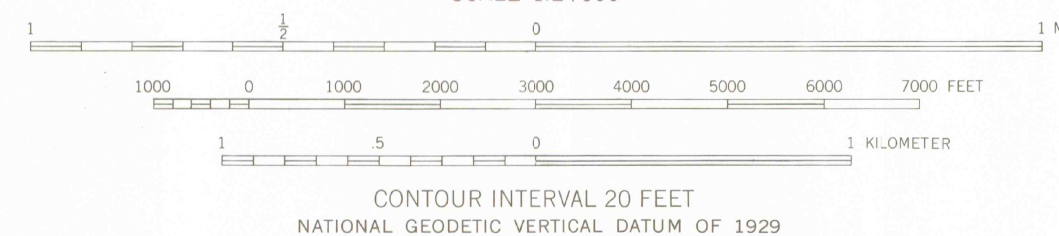
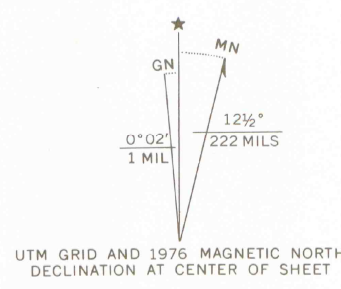


I 19.21/3: C71/P635



Map by the Army Map Service
Published for civil use by the Geological Survey
Control by NOS/NOAA, USGS, and USCE
Topography from aerial photographs by multiplex methods
Aerial photographs taken 1950. Field check 1951
Polyconic projection. 1927 North American datum
10,000-foot grid based on Colorado coordinate system,
central zone
1000-meter Universal Transverse Mercator grid ticks,
zone 13, shown in blue
Revisions shown in purple compiled by the Geological Survey from
aerial photographs taken 1976. This information not field checked



ROAD CLASSIFICATION
Heavy-duty ——— Light-duty ———
Unimproved dirt - - - - - State Route

QUADRANGLE LOCATION
COLORADO
SOUTHWEST MISSOURI STATE
UNIVERSITY LIBRARY
& DEPOSITORY COPY
APR 20 1978
PIKES PEAK, COLO.
N3845-W10500/7 5
1951
PHOTOREVISED 1976
AMS 4961 I SE-SERIES V877

LIBRARY ONLY

THIS MAP COMPLIES WITH NATIONAL MAP ACCURACY STANDARDS
FOR SALE BY U. S. GEOLOGICAL SURVEY, DENVER, COLORADO 80225, OR RESTON, VIRGINIA 22092
A FOLDER DESCRIBING TOPOGRAPHIC MAPS AND SYMBOLS IS AVAILABLE ON REQUEST

G-4310/C15/P636P/24/19.21/3/1976