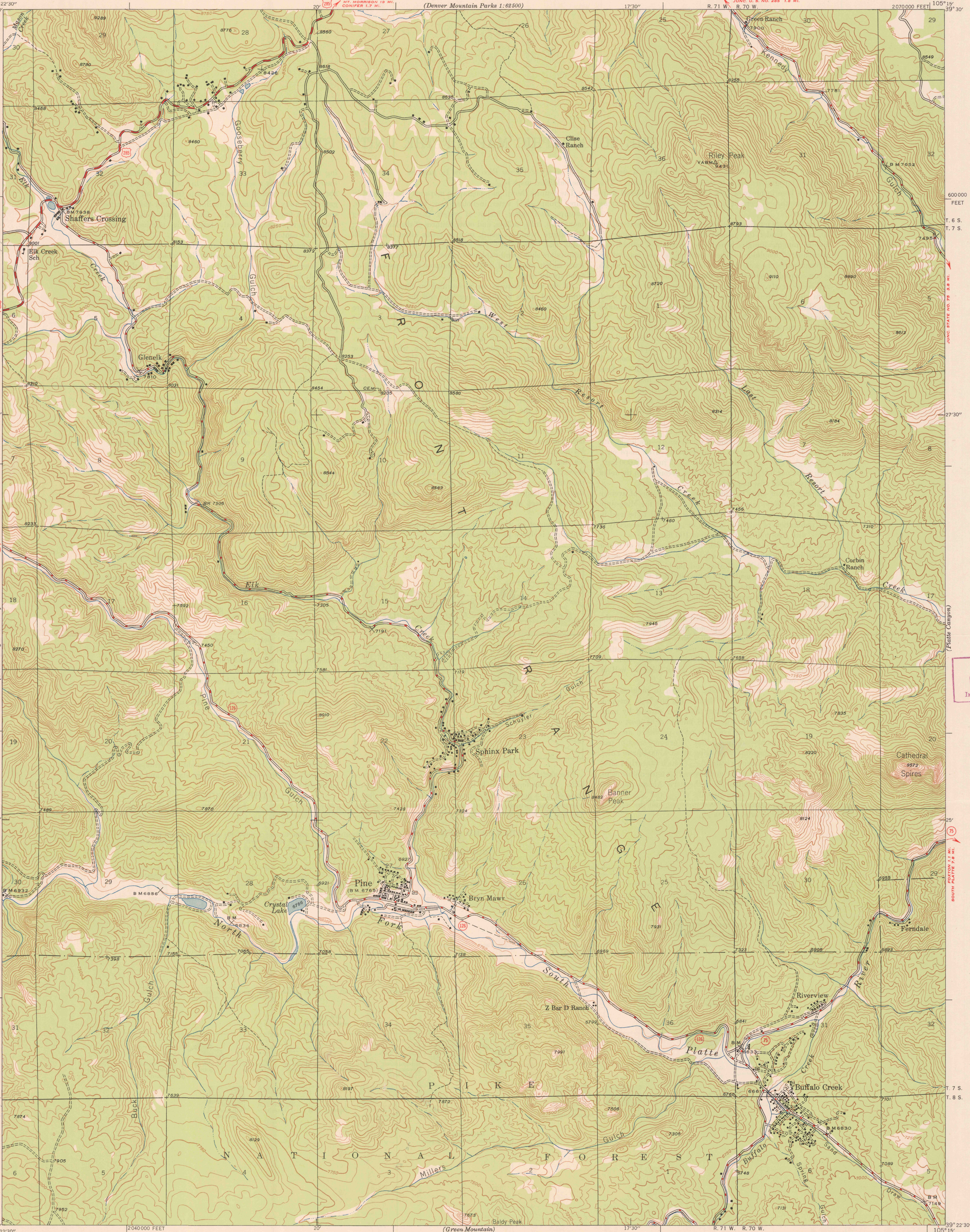


U. S. G. S.
FILE COPY
Inspection and Editing.



U. S. G. S.
FILE COPY
Inspection and Editing.

U. S. G. S.
FILE COPY
Inspection and Editing.

USGS Library
Reston, VA.
Topo Archive

Mapped by the Geological Survey
1945

ROAD CLASSIFICATION
1947
Dependable hard-surface road (solid red line)
Hazardous road (dashed red line)
Secondary hard-surface road (dotted red line)
All-weather road (dashed red line with cross-ticks)
More than two lanes indicated along road with tick at point of change (double red line with cross-ticks)

U. S. Route (red circle with number)
State Route (red circle with number)

TRUE NORTH
MAGNETIC NORTH
APPROXIMATE MEAN
DECLINATION, 1946

Scale 24,000
0 1000 2000 3000 4000 5000 6000 7000 Feet
0 1 2 3 4 5 Kilometers
Contour interval 50 feet
Datum is mean sea level

U. S. G. S.
FILE COPY
Inspection and Editing.

USGS
Historical File
Topographic Division

PINE, COLO.
Edition of 1948

N 3922.5 - W 10515 / 7.5

APR 7 1948

2125