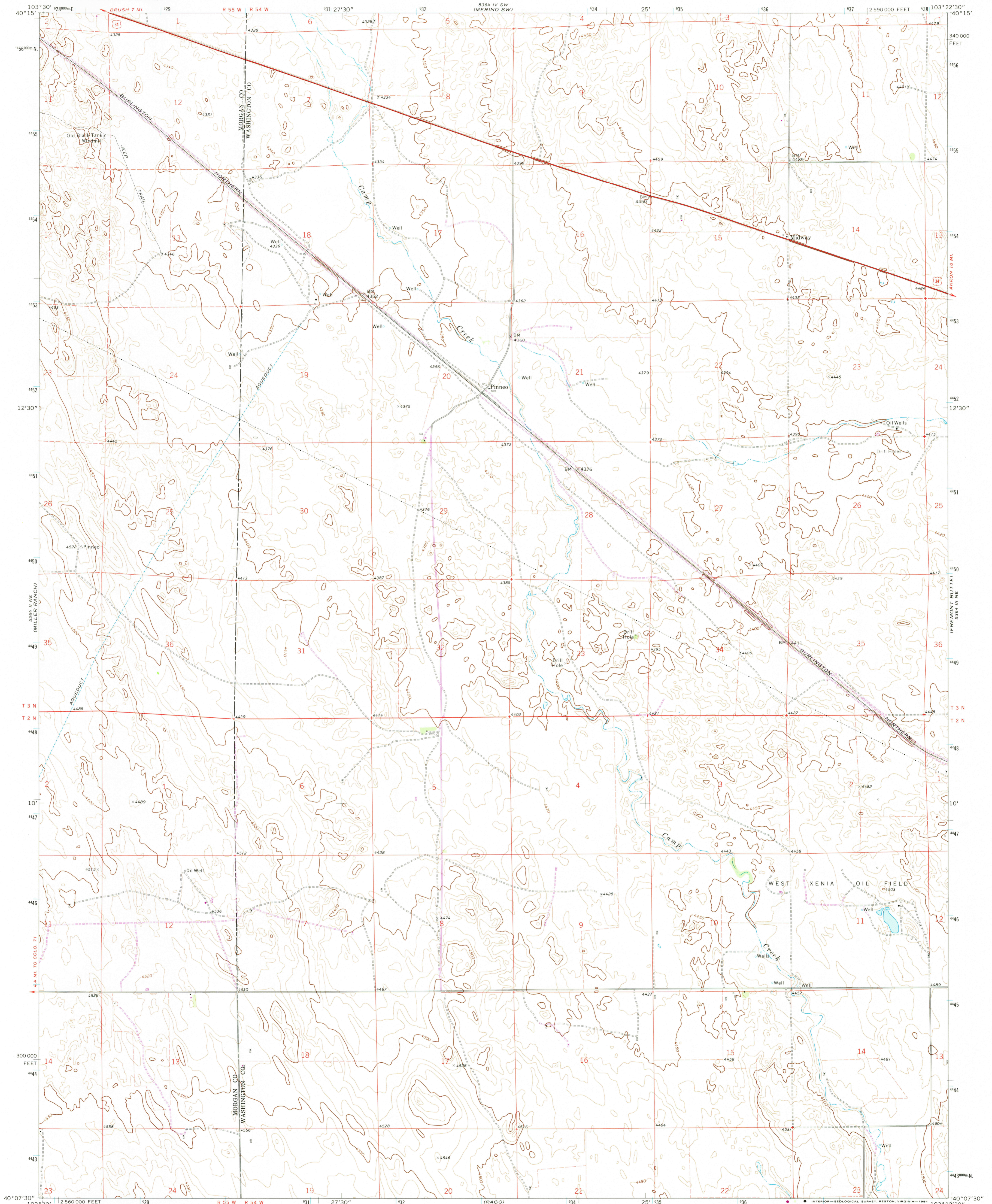


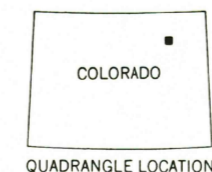
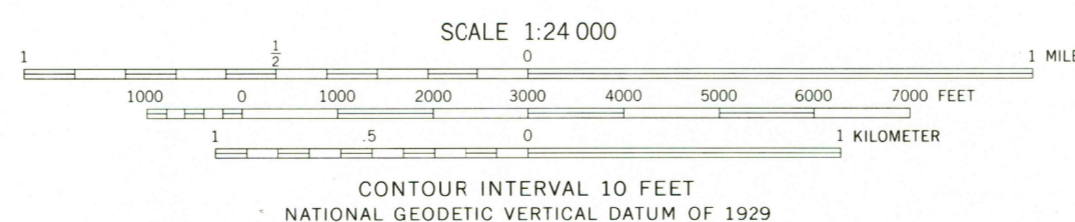
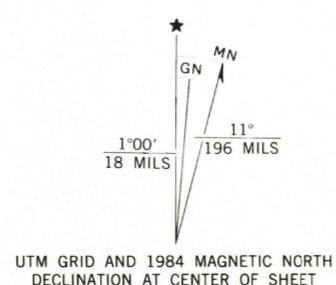
UNITED STATES  
DEPARTMENT OF THE INTERIOR  
GEOLOGICAL SURVEY

PINNEO QUADRANGLE  
COLORADO  
7.5 MINUTE SERIES (TOPOGRAPHIC)



Mapped, edited, and published by the Geological Survey

Control by USGS and NOS/NOAA  
Topography by photogrammetric methods from aerial photographs taken 1972. Field checked 1973  
Projection and 10,000-foot grid ticks: Colorado coordinate system, north zone (Lambert conformal conic)  
1000-meter Universal Transverse Mercator grid ticks, zone 13, shown in blue  
1927 North American Datum  
To place on the predicted North American Datum 1983 move the projection lines 5 meters north and 43 meters east as shown by dashed corner ticks  
Fine red dashed lines indicate selected fence lines  
Revisions shown in purple and woodland compiled from aerial photographs taken 1982 and other sources  
This information not field checked. Map edited 1984



ROAD CLASSIFICATION

Primary highway, hard surface	Light-duty road, hard or improved surface
Secondary highway, hard surface	Unimproved road
Interstate Route	U. S. Route
	State Route

THIS MAP COMPLIES WITH NATIONAL MAP ACCURACY STANDARDS  
FOR SALE BY U.S. GEOLOGICAL SURVEY, DENVER, COLORADO 80225, OR RESTON, VIRGINIA 22092  
A FOLDER DESCRIBING TOPOGRAPHIC MAPS AND SYMBOLS IS AVAILABLE ON REQUEST

PINNEO, COLO.  
40103-B4-TF-024

1973  
PHOTOREVISED 1984  
DMA 5364 III NW-SERIES V877