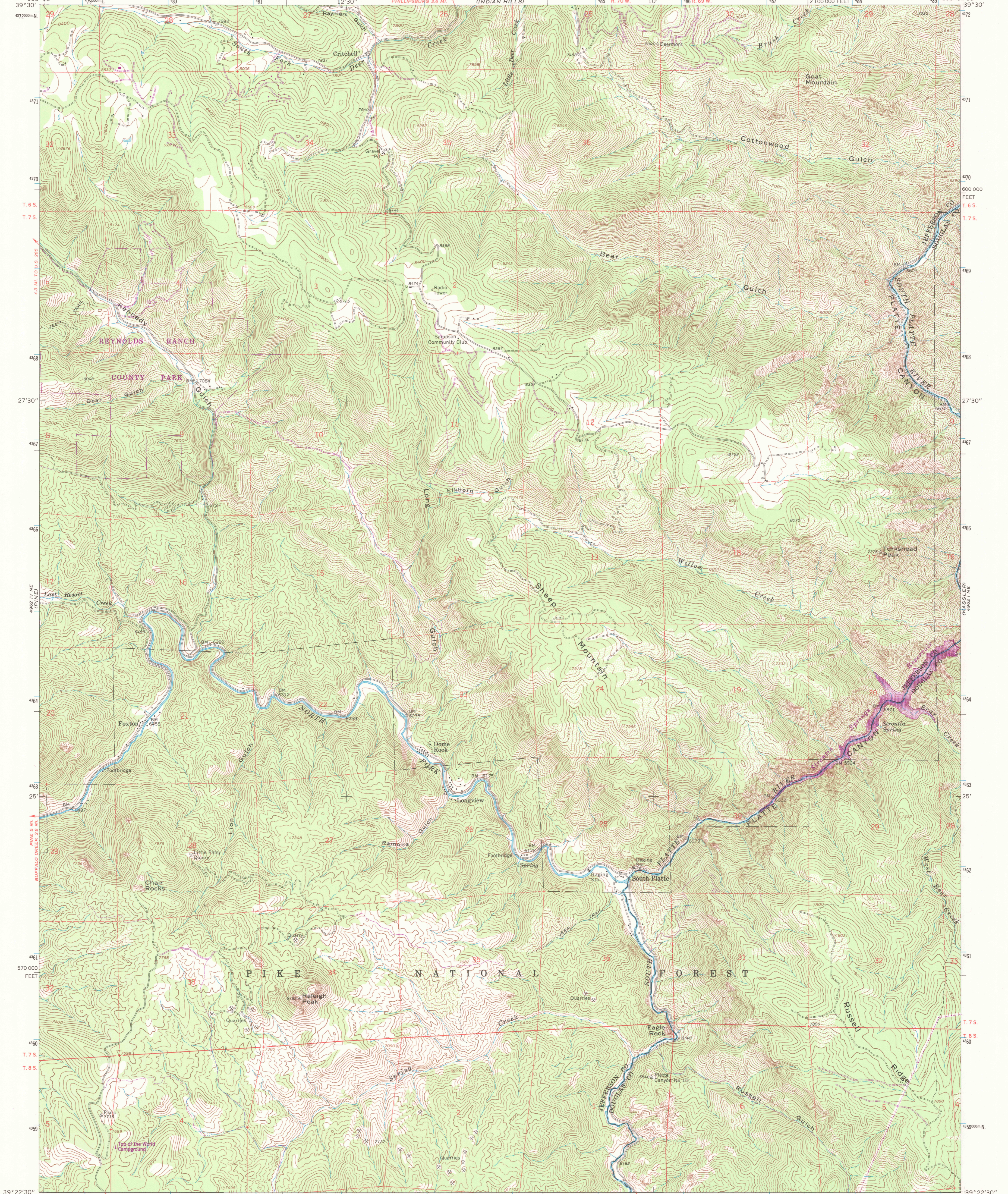


4962 11 SE  
CONIFER

4962 11 SE  
LITTLETON



Mapped, edited, and published by the Geological Survey

Control by USGS and NOS/NOAA  
Topography by photogrammetric methods from aerial photographs taken 1964. Field checked 1965  
Supersedes map dated 1945

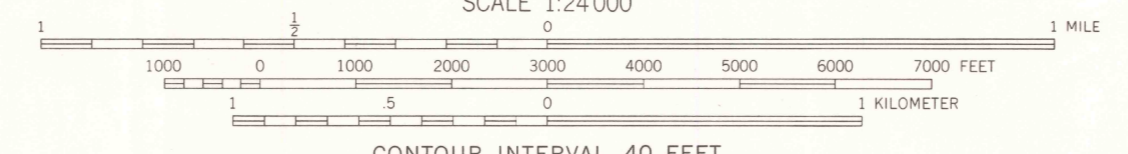
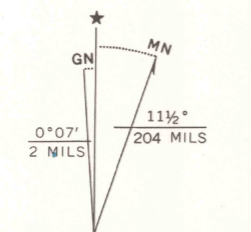
Polyconic projection. 1927 North American Datum  
10,000-foot grid based on Colorado coordinate system, central zone  
100-meter Universal Transverse Mercator grid ticks, zone 13, shown in blue

There may be private inholdings within the boundaries of the National or State reservations shown on this map

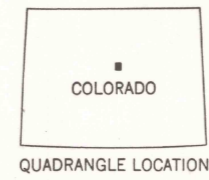
To place on the predicted North American Datum 1983 move the projection lines 5 meters north and 48 meters east as shown by dashed corner ticks

Revisions shown in purple and woodland compiled from aerial photographs taken 1983 and other source data. Partial field check by U. S. Forest Service. Map edited 1985

UTM GRID AND 1985 MAGNETIC NORTH DECLINATION AT CENTER OF SHEET



CONTOUR INTERVAL 40 FEET  
NATIONAL GEODETIC VERTICAL DATUM OF 1929



ROAD CLASSIFICATION  
Light-duty ————— Unimproved dirt - - - - -

PLATTE CANYON, COLO.  
39105-D2-TF-024

1965  
PHOTOREVISED 1985  
DMA 4962 1 NW-SERIES V877

THIS MAP COMPLIES WITH NATIONAL MAP ACCURACY STANDARDS  
FOR SALE BY U. S. GEOLOGICAL SURVEY, DENVER, COLORADO 80225, OR RESTON, VIRGINIA 22092  
A FOLDER DESCRIBING TOPOGRAPHIC MAPS AND SYMBOLS IS AVAILABLE ON REQUEST

RETURN TO:  
USGS MAP HISTORICAL MAP ARCHIVES

10E-VIIS HEAD  
4962 11 SE