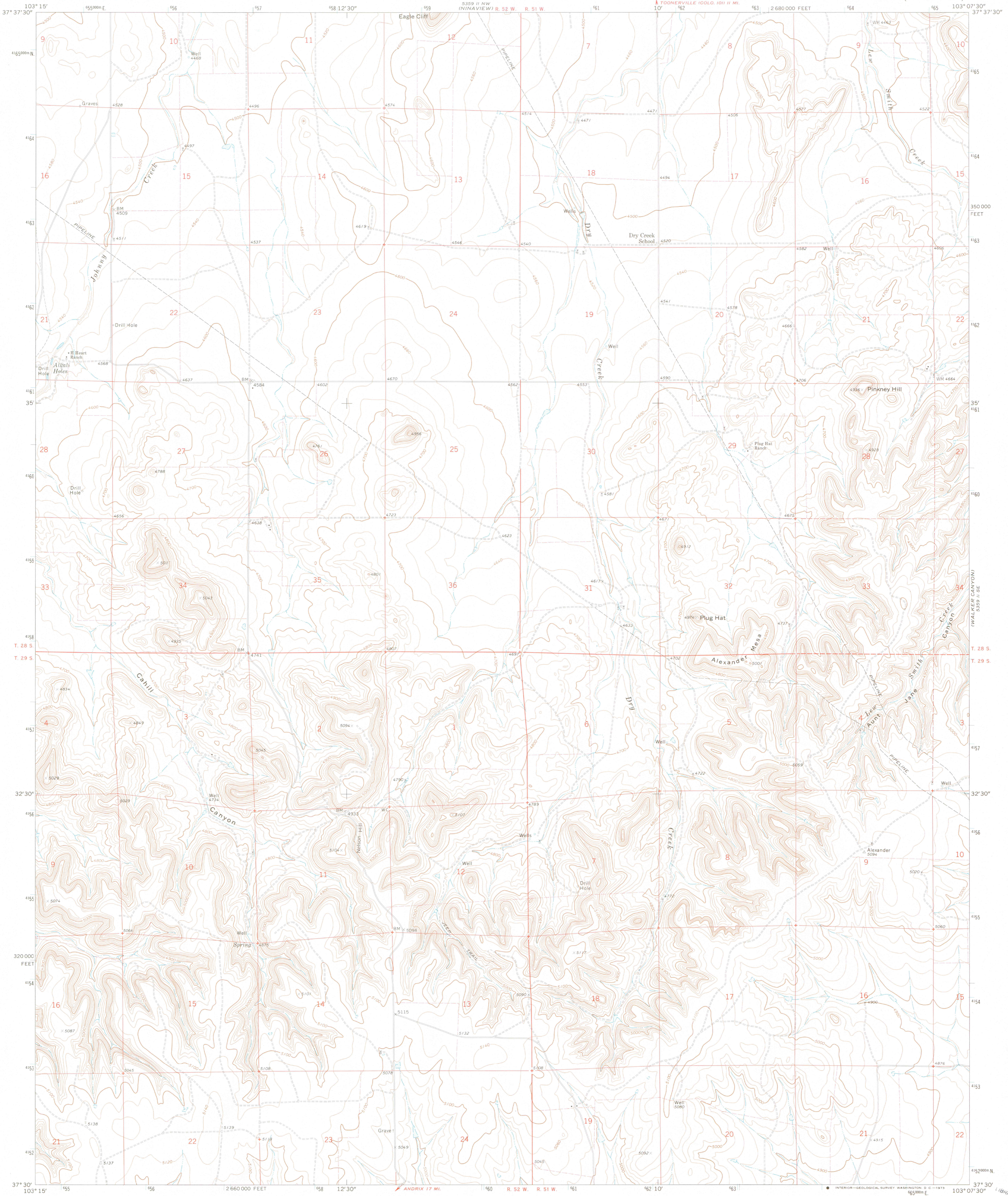
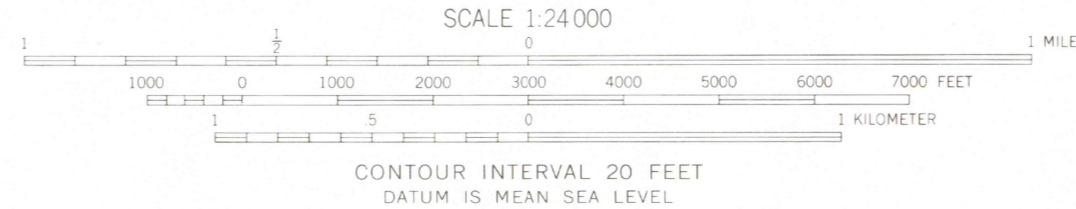
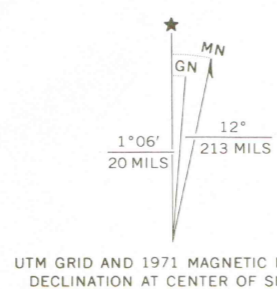


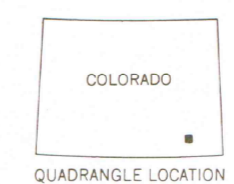
37° 37' 30" N
103° 07' 30" W
PLUG HAT RANCH



Mapped, edited, and published by the Geological Survey
Control by USGS and USC&GS
Topography by photogrammetric methods from aerial
photographs taken 1969. Field checked 1971
Projection and 10,000-foot grid ticks: Colorado
coordinate system, south zone (Lambert conformal conic)
1000-meter Universal Transverse Mercator grid ticks,
zone 13, shown in blue. 1927 North American datum
Fine red dashed lines indicate selected fence lines



CONTOUR INTERVAL 20 FEET
DATUM IS MEAN SEA LEVEL



ROAD CLASSIFICATION

Primary highway, hard surface	Light-duty road, hard or improved surface
Secondary highway, hard surface	Unimproved road
Interstate Route	U. S. Route
	State Route

OFFICE COPY

THIS MAP COMPLIES WITH NATIONAL MAP ACCURACY STANDARDS
FOR SALE BY U. S. GEOLOGICAL SURVEY, DENVER, COLORADO 80225, OR WASHINGTON, D. C. 20242
A FOLDER DESCRIBING TOPOGRAPHIC MAPS AND SYMBOLS IS AVAILABLE ON REQUEST



LIBRARY
COLORADO SCHOOL OF MINES
GOLDEN, COLORADO

PLUG HAT RANCH, COLO.
N3730—W10307.5/7.5

1971
AMS 5359 II SW—SERIES V877

G
3701
C222
s24
U5