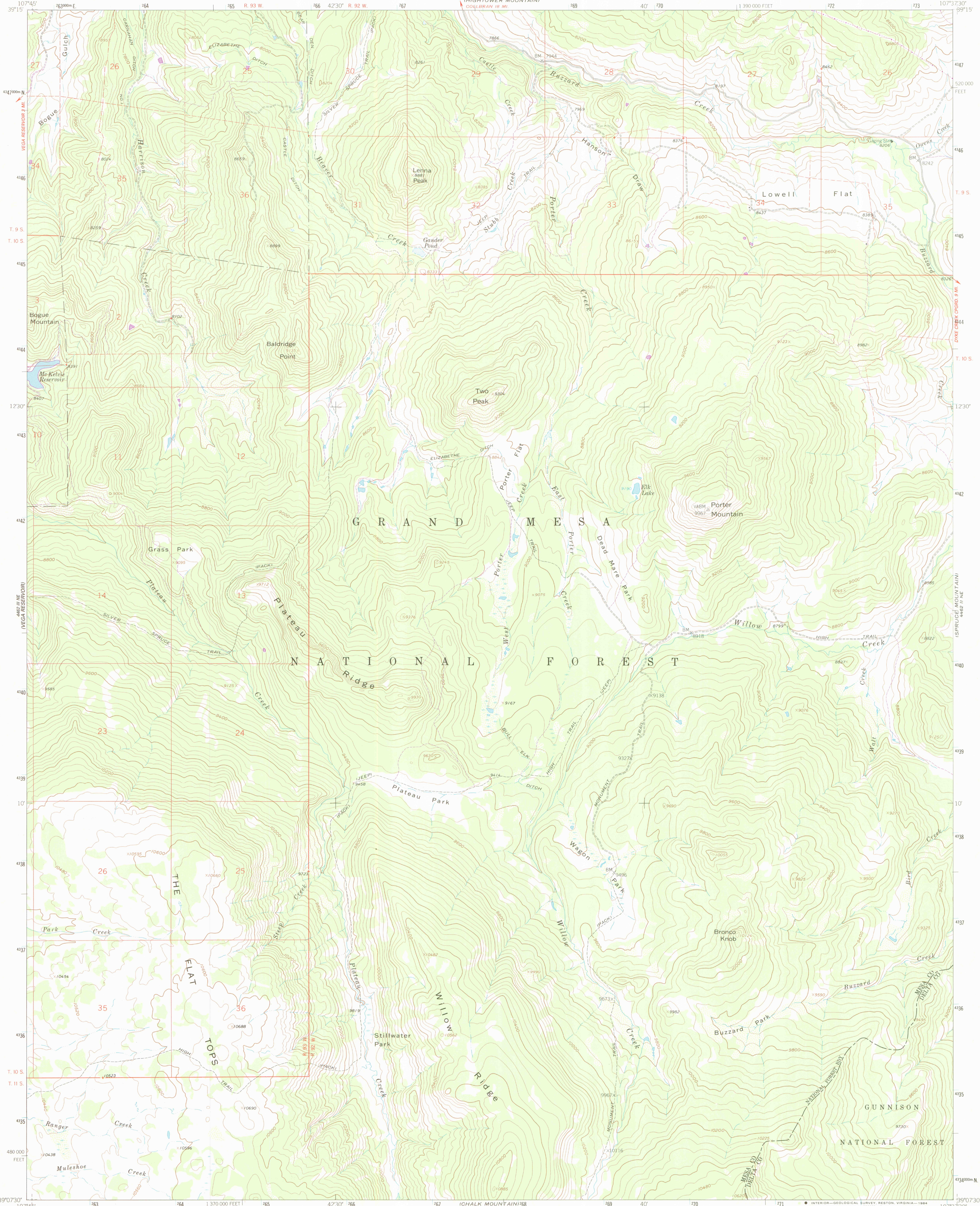
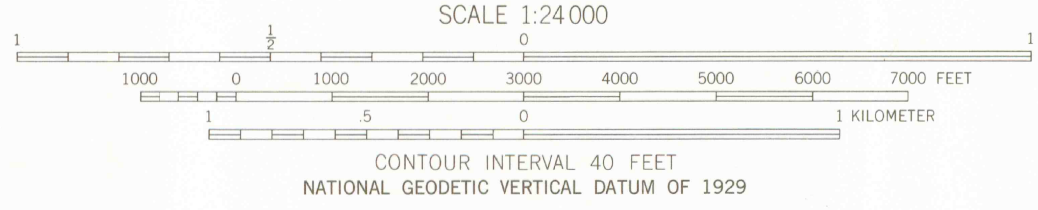
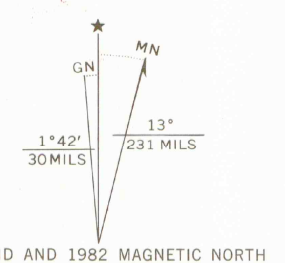


4462 1 SW
(HIGHTOWER MOUNTAIN)
COLLEBRAN 10 MI.

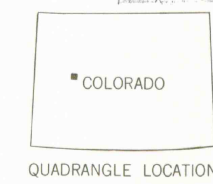


Mapped, edited, and published by the Geological Survey

Control by USGS and NOS/NOAA
Topography by photogrammetric methods from aerial photographs taken 1956. Field checked 1961.
Polyconic projection. 1927 North American Datum
10,000-foot grid based on Colorado coordinate system, central zone
1000-meter Universal Transverse Mercator grid ticks, zone 13, shown in blue
Fine red dashed lines indicate selected fence lines
Where omitted, land lines have not been established
To place on the predicted North American Datum 1983
move the projection lines 5 meters north and
55 meters east as shown by dashed corner ticks



OFFICE COPY



ROAD CLASSIFICATION
Light-duty ——— Unimproved dirt ———

PORTER MOUNTAIN, COLO. X
39107-B6-TF-024

THIS MAP COMPLIES WITH NATIONAL MAP ACCURACY STANDARDS
FOR SALE BY U. S. GEOLOGICAL SURVEY, DENVER, COLORADO 80225, OR RESTON, VIRGINIA 22092
A FOLDER DESCRIBING TOPOGRAPHIC MAPS AND SYMBOLS IS AVAILABLE ON REQUEST

There may be private inholdings within the boundaries
of the National or State reservations shown on this map

1961
PHOTO REVISSED 1982
DMA 4462 11 NW—SERIES V877

G
C222
S24
U5

LIBRARY USE ONLY