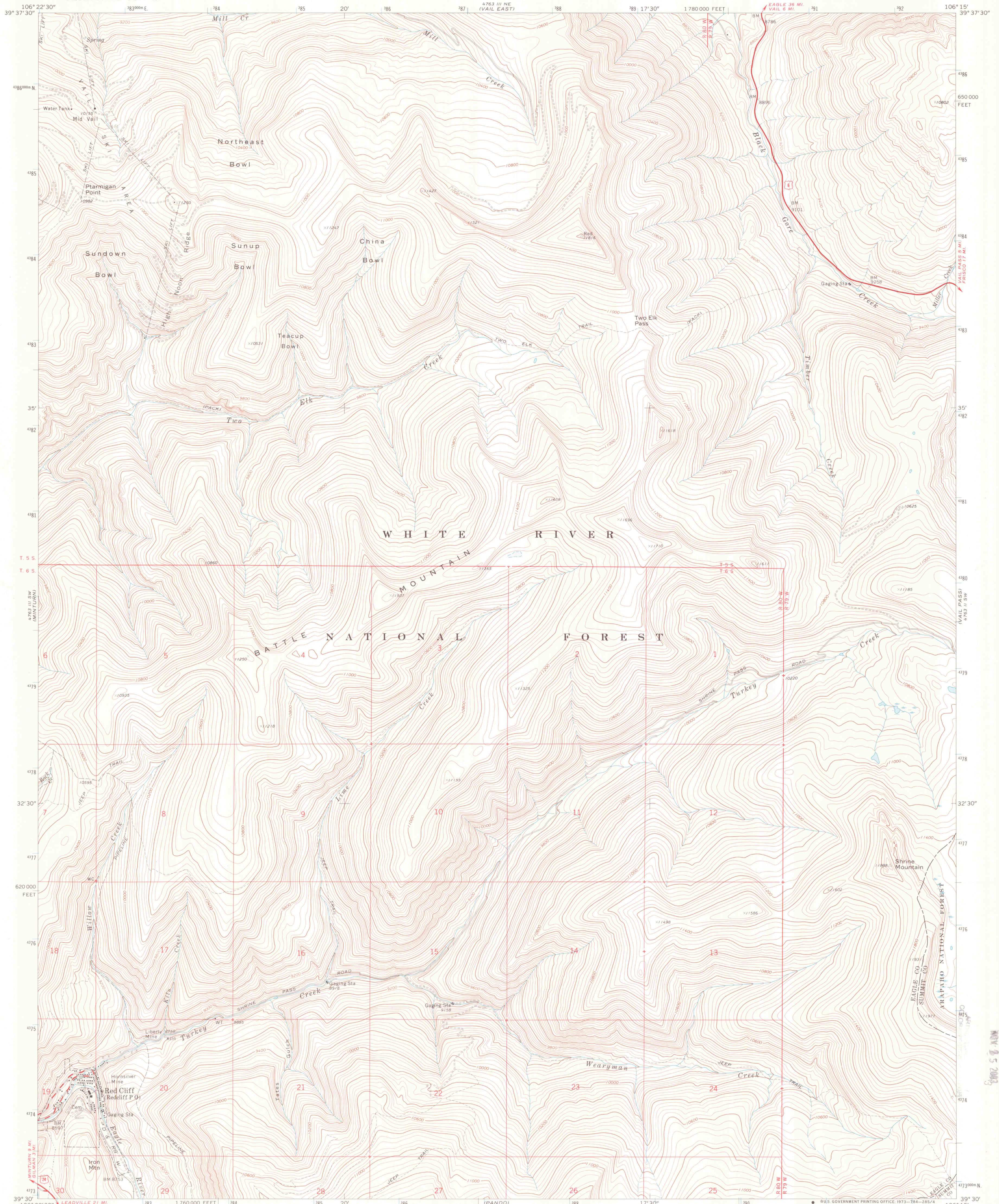


UNITED STATES
DEPARTMENT OF THE INTERIOR
GEOLOGICAL SURVEY

RED CLIFF QUADRANGLE
COLORADO
7.5 MINUTE SERIES (TOPOGRAPHIC)
SE 1/4 MINUTURN 15' QUADRANGLE



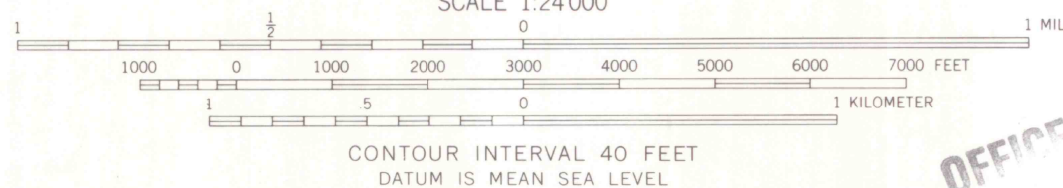
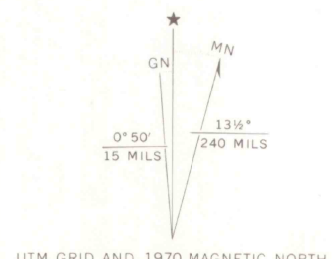
Mapped, edited, and published by the Geological Survey

Control by USGS and USC&GS

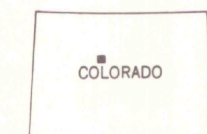
Topography by photogrammetric methods from aerial photographs taken 1969. Field checked 1970.

Polyconic projection. 1927 North American datum. 10,000-foot grid based on Colorado coordinate system, central zone. 1000-meter Universal Transverse Mercator grid ticks, zone 13, shown in blue.

Where omitted, land lines have not been established or are not shown because of insufficient data.



ROAD CLASSIFICATION
Primary highway, hard surface
Secondary highway, hard surface
Unimproved road
Interstate Route
U.S. Route
State Route



MSU MAP LIBRARY

RED CLIFF, COLO.
SE 1/4 MINUTURN 15' QUADRANGLE
N3930-W10615/7.5

1970

AMS 4763 III SE-SERIES V877

THIS MAP COMPLIES WITH NATIONAL MAP ACCURACY STANDARDS
FOR SALE BY U.S. GEOLOGICAL SURVEY, DENVER, COLORADO 80225, OR WASHINGTON, D.C. 20242
A FOLDER DESCRIBING TOPOGRAPHIC MAPS AND SYMBOLS IS AVAILABLE ON REQUEST