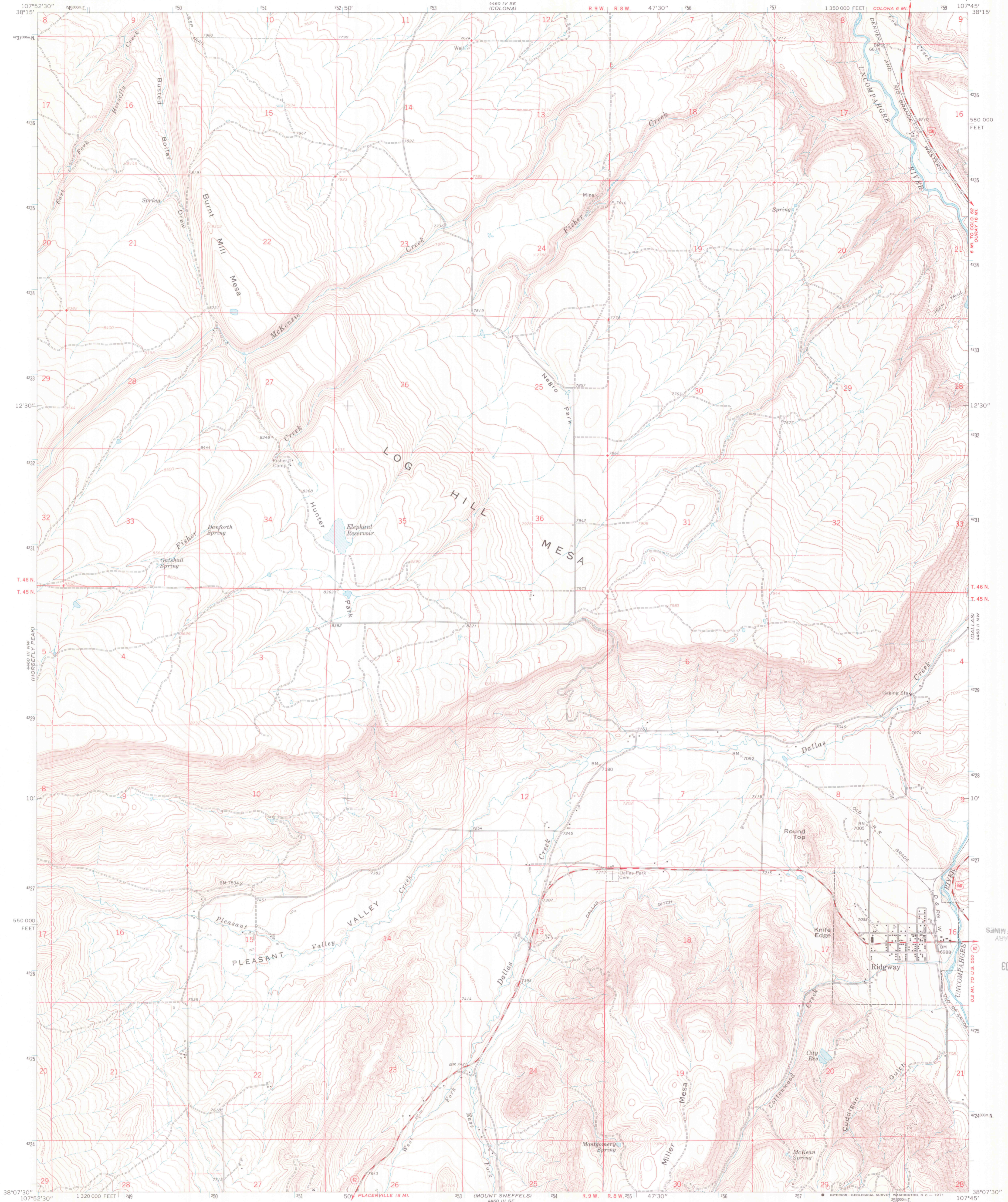


4460 1/4 SW
(BUCKHOORN LAVER)



NOV 25 2003
ASTRONOMICAL LIBRARY
UNIVERSITY OF MICHIGAN

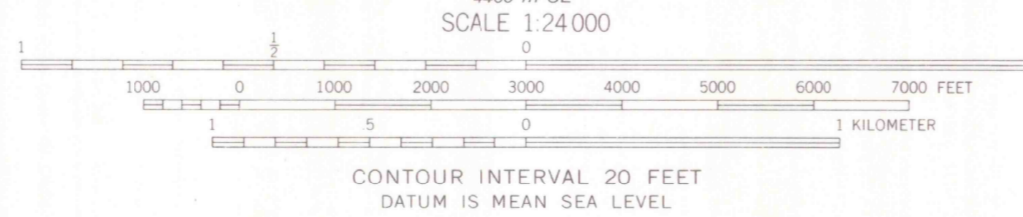
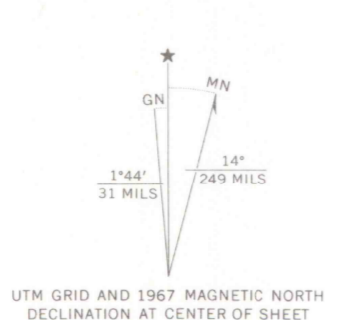


ROAD CLASSIFICATION
Secondary highway, all weather, hard surface
Light-duty road, all weather, improved surface
Unimproved road, fair or dry weather

U.S. Route
State Department of Geography and Geology
Southwest Missouri State University
Springfield, Missouri 65802

OFFICE COPY
LIBRARY USE ONLY
RIDGWAY, COLO.
N3807.5—W10745/7.5
1967
AMS 4460 III NE—SERIES V877

Mapped, edited, and published by the Geological Survey
Control by USGS and USC&GS
Topography by photogrammetric methods from aerial photographs taken 1965. Field checked 1967
Polyconic projection. 1927 North American datum
10,000-foot grid based on Colorado coordinate system, south zone
1000-meter Universal Transverse Mercator grid ticks, zone 13, shown in blue
Fine red dashed lines indicate selected fence lines



THIS MAP COMPLIES WITH NATIONAL MAP ACCURACY STANDARDS
FOR SALE BY U.S. GEOLOGICAL SURVEY, DENVER, COLORADO 80225, OR WASHINGTON, D.C. 20242
A FOLDER DESCRIBING TOPOGRAPHIC MAPS AND SYMBOLS IS AVAILABLE ON REQUEST