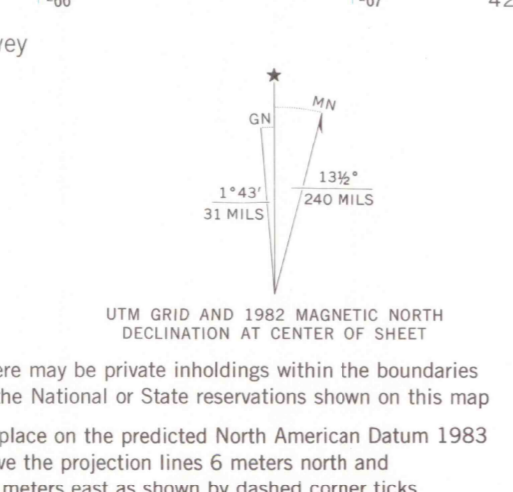


Mapped, edited, and published by the Geological Survey  
Control by USGS and NOS/NOAA  
Topography by photogrammetric methods from aerial photographs taken 1964. Field checked 1966  
Polyconic projection. 1927 North American Datum  
10,000-foot grid based on Colorado coordinate system, central zone  
1000-meter Universal Transverse Mercator grid ticks, zone 13, shown in blue  
Fine red dashed lines indicate selected fence lines  
Where omitted, land lines have not been established or are not shown because of insufficient data  
There may be private inholdings within the boundaries of the National or State reservations shown on this map  
To place on the predicted North American Datum 1983 move the projection lines 6 meters north and 54 meters east as shown by dashed corner ticks



SCALE 1:24 000  
CONTOUR INTERVAL 40 FEET  
NATIONAL GEODETIC VERTICAL DATUM OF 1929  
ARTHUR LAKES LIBRARY  
COLORADO SCHOOL OF MINES  
GOLDEN, COLORADO  
THIS MAP COMPLIES WITH NATIONAL MAP ACCURACY STANDARDS  
FOR SALE BY U. S. GEOLOGICAL SURVEY, DENVER, COLORADO 80225, OR RESTON, VIRGINIA 22092  
A FOLDER DESCRIBING TOPOGRAPHIC MAPS AND SYMBOLS IS AVAILABLE ON REQUEST

OFFICE COPY  
LIBRARY USE ONLY  
COLORADO  
QUADRANGLE LOCATION

ROAD CLASSIFICATION  
Medium-duty — Light-duty  
Unimproved dirt  
State Route  
GEOLOGICAL SURVEY OF WYOMING  
RIFLE FALLS, COLO.  
39107-F6-TF-024  
1966  
PHOTOREVISED 1982  
DMA 4463 II NW—SERIES V877

