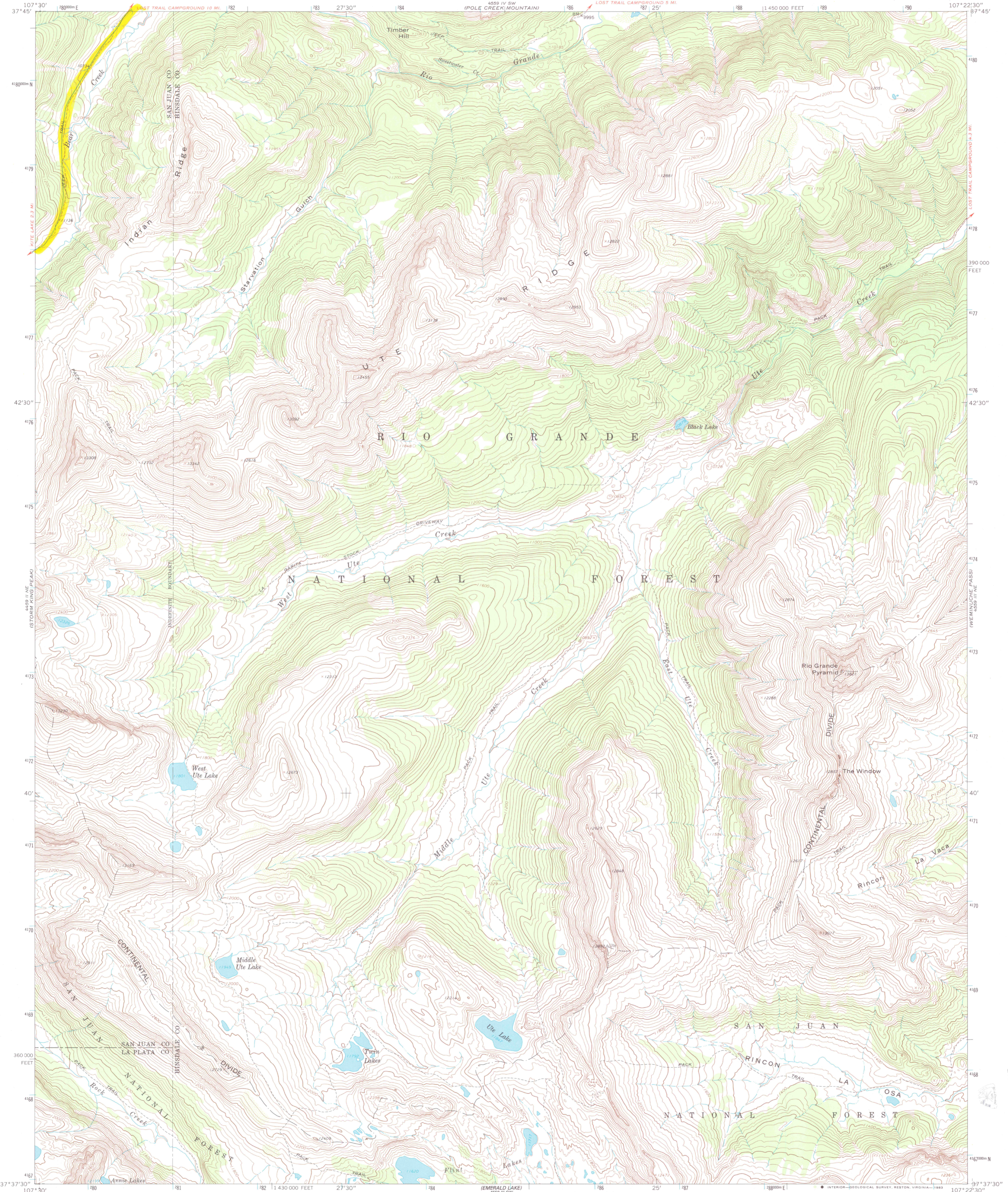


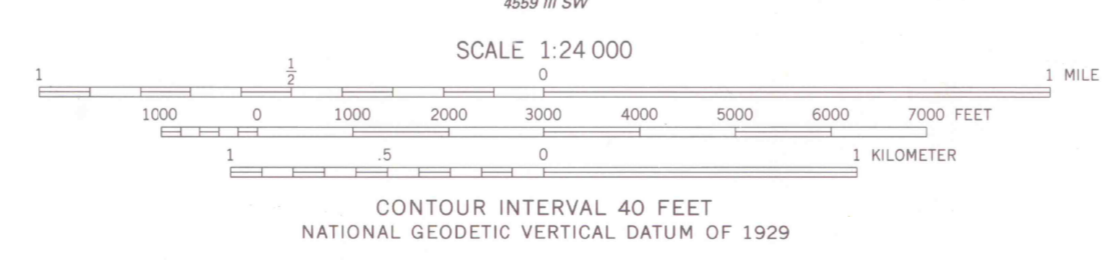
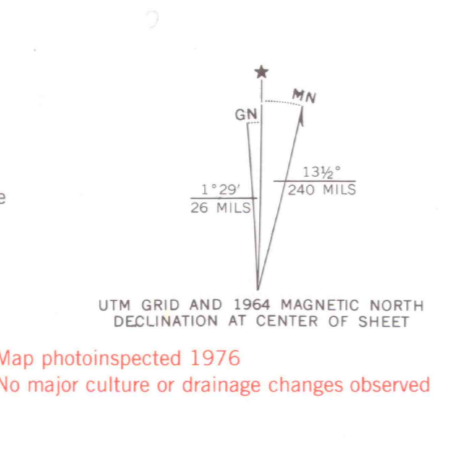
52



4591 NE (STORM KING PEAK)  
4591 SE (COLUMBIE PASS)  
4591 SW (HOWARDSVILLE)

4591 SE (FRINGER MESA)  
4591 NE (WEINLICHE PASS)  
4591 SW (GRANITE LAKE)

Mapped, edited, and published by the Geological Survey  
Control by USGS and USC&GS  
Topography by photogrammetric methods from aerial photographs taken 1963. Field checked 1964  
Polyconic projection. 1927 North American datum  
10,000-foot grid based on Colorado coordinate system, south zone  
1000-meter Universal Transverse Mercator grid ticks, zone 13, shown in blue  
Land lines have not been established in this area  
To place on the predicted North American Datum 1983 move the projection lines 3 meters north and 54 meters east as shown by dashed corner ticks  
There may be private inholdings within the boundaries of the National or State reservations shown on this map



ROAD CLASSIFICATION  
Unimproved dirt -----

THIS MAP COMPLIES WITH NATIONAL MAP ACCURACY STANDARDS  
FOR SALE BY U. S. GEOLOGICAL SURVEY, DENVER, COLORADO 80225, OR RESTON, VIRGINIA 22092  
A FOLDER DESCRIBING TOPOGRAPHIC MAPS AND SYMBOLS IS AVAILABLE ON REQUEST

RIO GRANDE PYRAMID, COLO.  
N3737.5—W10722.5/7.5  
1964  
PHOTOINSPECTED 1976  
DMA 4559 III NW-SERIES V877

C 3700  
624  
.64  
MAP ROOM

APR 20 2005  
ARTHUR L. LAMBERT  
COLORADO STATE LIBRARY