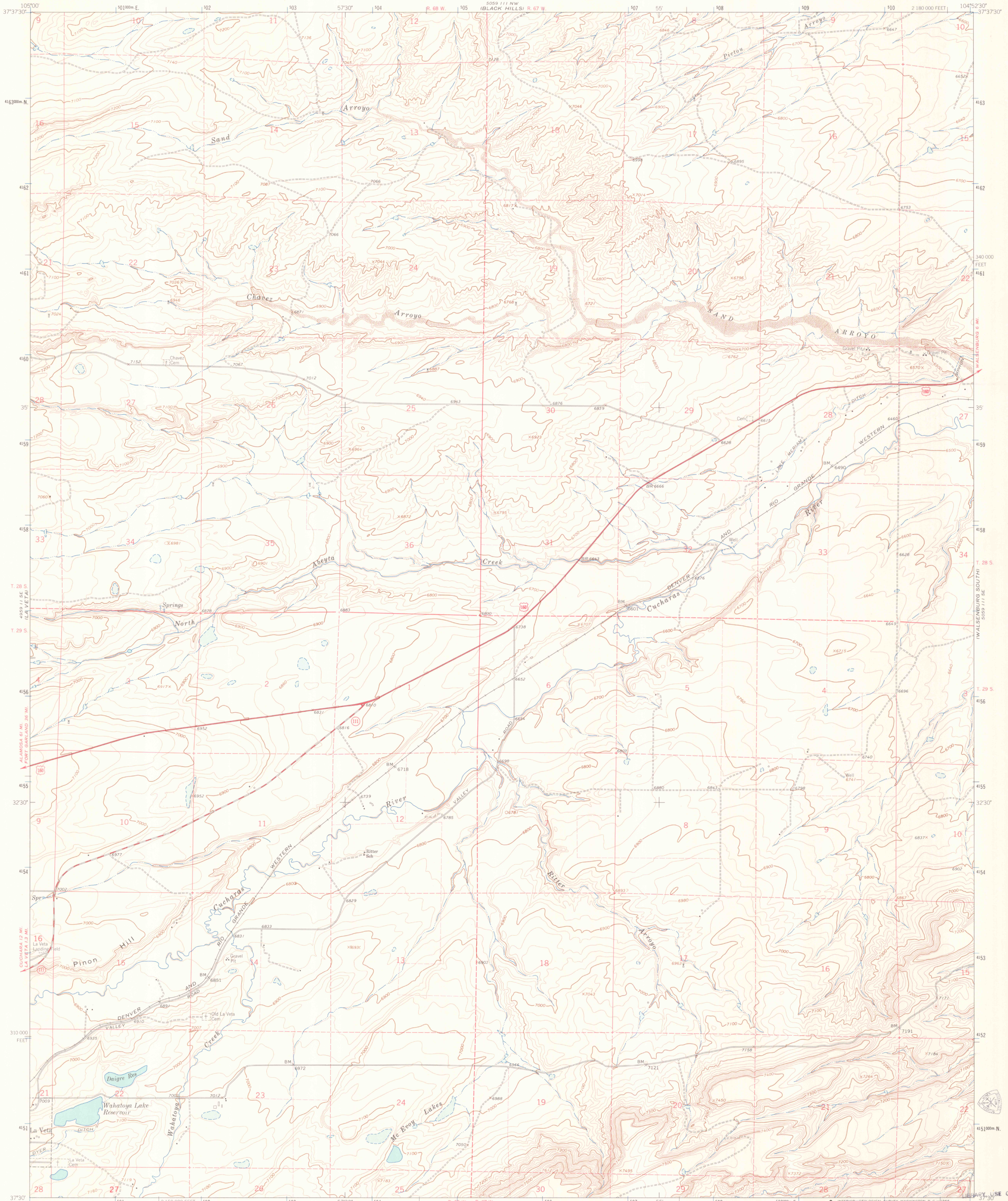
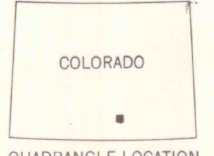
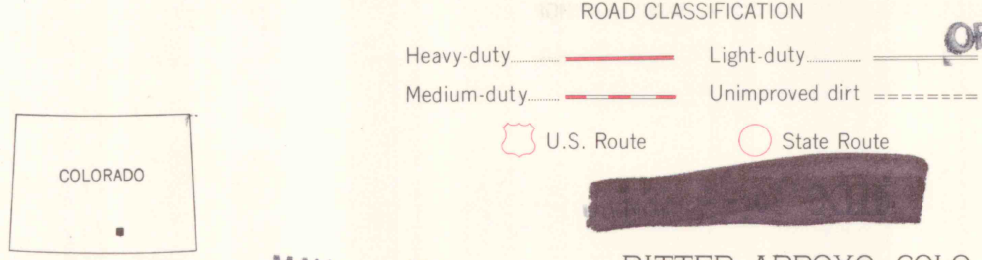
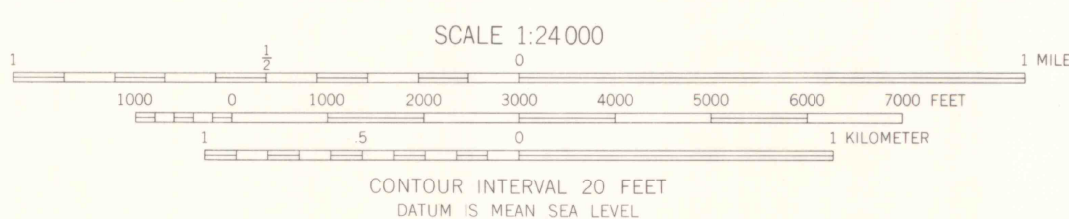
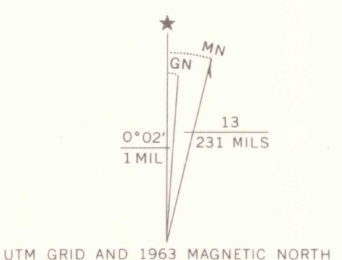


5059 111 NE
WALSLEBURG NORTH



Mapped, edited, and published by the Geological Survey

Control by USGS and USC&GS
Topography by photogrammetric methods from aerial photographs taken 1960. Field checked 1963
Polyconic projection, 1927 North American datum
10,000-foot grid based on Colorado coordinate system, south zone
1000-meter Universal Transverse Mercator grid ticks, zone 13, shown in blue
Fine red dashed lines indicate selected fence lines



THIS MAP COMPLIES WITH NATIONAL MAP ACCURACY STANDARDS
FOR SALE BY U. S. GEOLOGICAL SURVEY, DENVER, COLORADO 80225, OR WASHINGTON, D. C. 20242
A FOLDER DESCRIBING TOPOGRAPHIC MAPS AND SYMBOLS IS AVAILABLE ON REQUEST

MAY 1995
RITTER ARROYO, COLO.
N3730-W10452.5/7.5
1963
AMS 5059 111 SW-SERIES V877

AUG 20 1997
MAP ROOM
ARTHUR LAKES LIBRARY
COLORADO SCHOOL OF MINES

3701
C222
S24
U5
1963

66