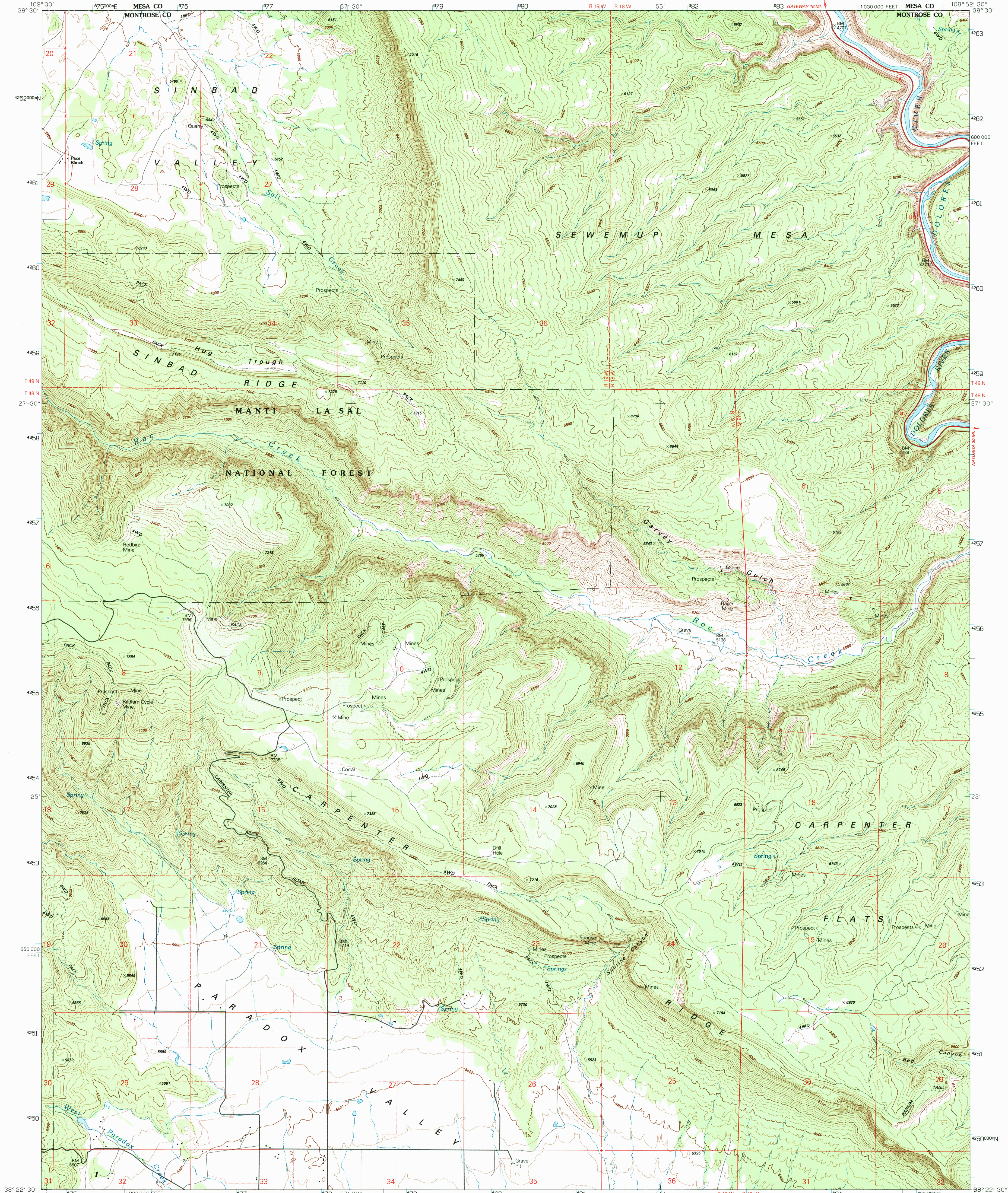
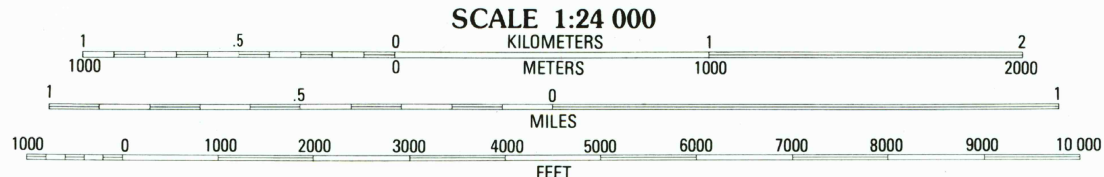
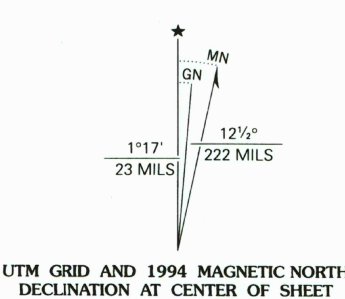


UNITED STATES
DEPARTMENT OF THE INTERIOR
GEOLOGICAL SURVEY

ROC CREEK QUADRANGLE
COLORADO-MONTROSE CO.
7.5-MINUTE SERIES (TOPOGRAPHIC)



Produced by the United States Geological Survey
Control by USGS and NOS/NOAA
Compiled from aerial photographs taken 1947. Revised from aerial
photographs taken 1988 and other sources. Field checked 1990
Map edited 1994
North American Datum of 1927 (NAD 27). Projection and
10 000-foot ticks: Colorado Coordinate System, south zone
(Lambert Conformal Conic)
Blue 1000-meter Universal Transverse Mercator ticks, zone 12
North American Datum of 1983 (NAD 83) is shown by dashed
corner ticks. The values of the shift between NAD 27 and NAD 83
for 7.5-minute intersections are obtainable from National Geodetic
Survey NADCON software
There may be private inholdings within the boundaries of the
National or State reservations shown on this map
Where omitted, land lines have not been established



CONTOUR INTERVAL 40 FEET
NATIONAL GEODETIC VERTICAL DATUM OF 1929
TO CONVERT FEET TO METERS MULTIPLY BY 0.3048
TO CONVERT METERS TO FEET MULTIPLY BY 3.2808

THIS MAP COMPLIES WITH NATIONAL MAP ACCURACY STANDARDS
FOR SALE BY U.S. GEOLOGICAL SURVEY
DENVER, COLORADO 80225 OR RESTON, VIRGINIA 22092
A FOLDER DESCRIBING TOPOGRAPHIC MAPS AND SYMBOLS IS AVAILABLE ON REQUEST

ROAD CLASSIFICATION

Primary highway, hard surface
Secondary highway, hard surface
Unimproved road

Light-duty road, hard or improved surface
Unimproved road

Interstate Route U. S. Route State Route

QUADRANGLE LOCATION

1	2	3	1 Dolores Point South
			2 Juanita Arch
			3 Calamity Mesa
4		5	4 Buckeye Reservoir
			5 Red Canyon
			6 Ray Mesa
6	7	8	7 Pandox
			8 Davis Mesa

ADJOINING 7.5' QUADRANGLE NAMES

ROC CREEK, CO
38108-D8-TF-024
1994
DMA 4260 IV NW-SERIES V877