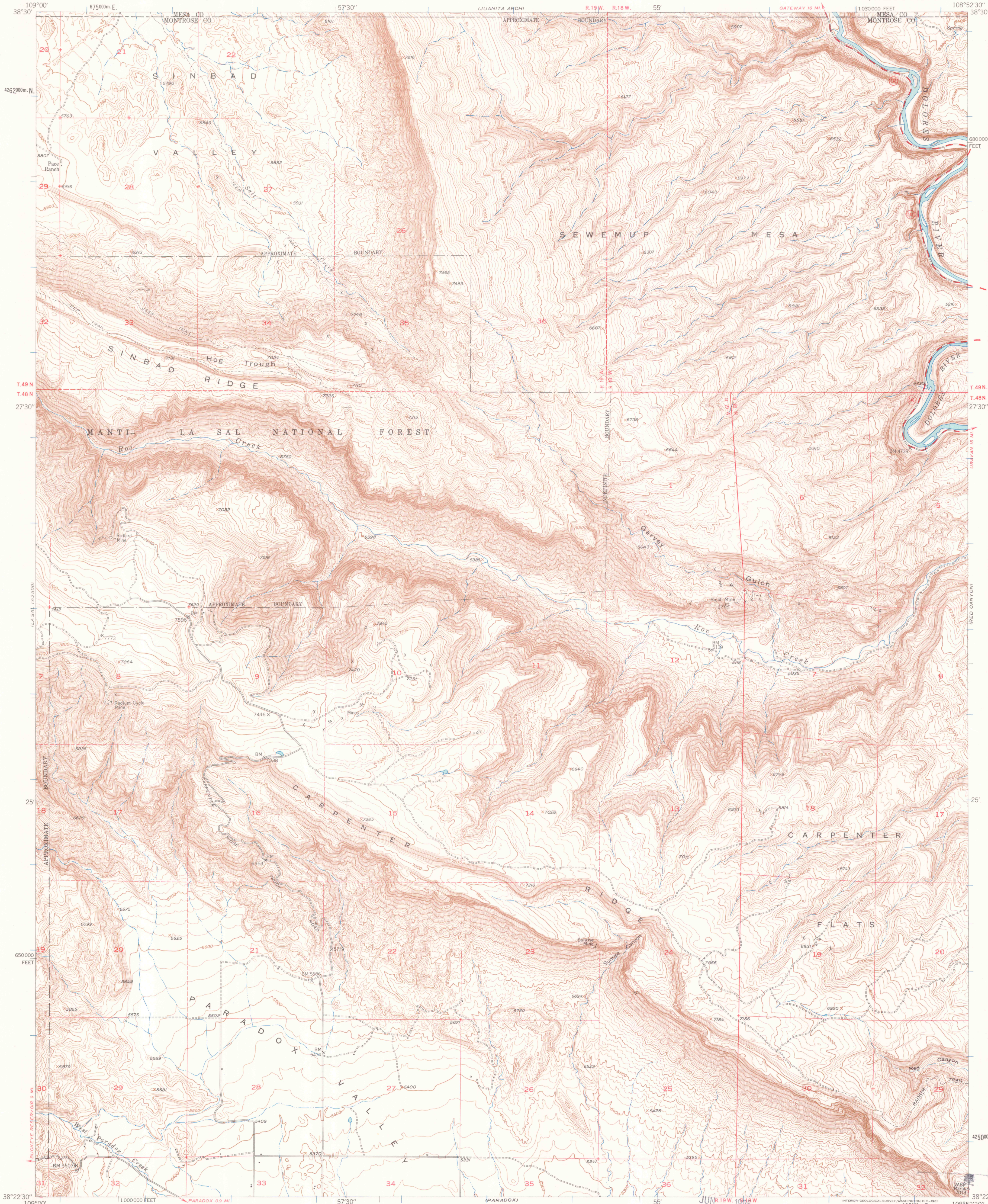


UNITED STATES  
DEPARTMENT OF THE INTERIOR  
GEOLOGICAL SURVEY

ROC CREEK QUADRANGLE  
COLORADO  
7.5 MINUTE SERIES (TOPOGRAPHIC)  
NW 1/4 PARADOX 15 QUADRANGLE



Maped, edited, and published by the Geological Survey  
Control by USGS and USC&GS  
Topography from aerial photographs by photogrammetric methods  
Aerial photographs taken 1947. Field check 1948. Revised 1960  
Polyconic projection. 1927 North American datum  
10,000-foot grid based on Colorado coordinate system,  
south zone  
Universal Transverse Mercator grid ticks,  
zone 12, shown in blue  
Dashed land lines indicate approximate locations  
Land lines omitted in parts of T. 48 N.,  
R. 19 W. and T. 49 N., Rs. 18 and 19 W.  
because of insufficient data

SCALE 1:24000  
1 0 1000 2000 3000 4000 5000 6000 7000 FEET  
1 0 5 10 KILOMETER  
CONTOUR INTERVAL 20 FEET  
DATUM IS MEAN SEA LEVEL  
THIS MAP COMPLIES WITH NATIONAL MAP ACCURACY STANDARDS  
FOR SALE BY U.S. GEOLOGICAL SURVEY, DENVER 2, COLORADO OR WASHINGTON 25, D.C.  
A FOLDER DESCRIBING TOPOGRAPHIC MAPS AND SYMBOLS IS AVAILABLE ON REQUEST

MAP ROOM  
ARTHUR LAKES LIBRARY  
COLORADO SCHOOL OF MINES  
JUN 19 1965  
ROAD CLASSIFICATION  
Medium-duty  
Light-duty  
Unimproved dirt  
State Route  
ROC CREEK, COLO.  
NW 1/4 PARADOX 15 QUADRANGLE  
N3822.5-W10852.5/7.5  
1960  
MAP ROOM  
ARTHUR LAKES LIBRARY  
COLORADO SCHOOL OF MINES  
MAY 1965  
QUADRANGLE LOCATION  
COLORADO  
U188002628414  
OFFICE