

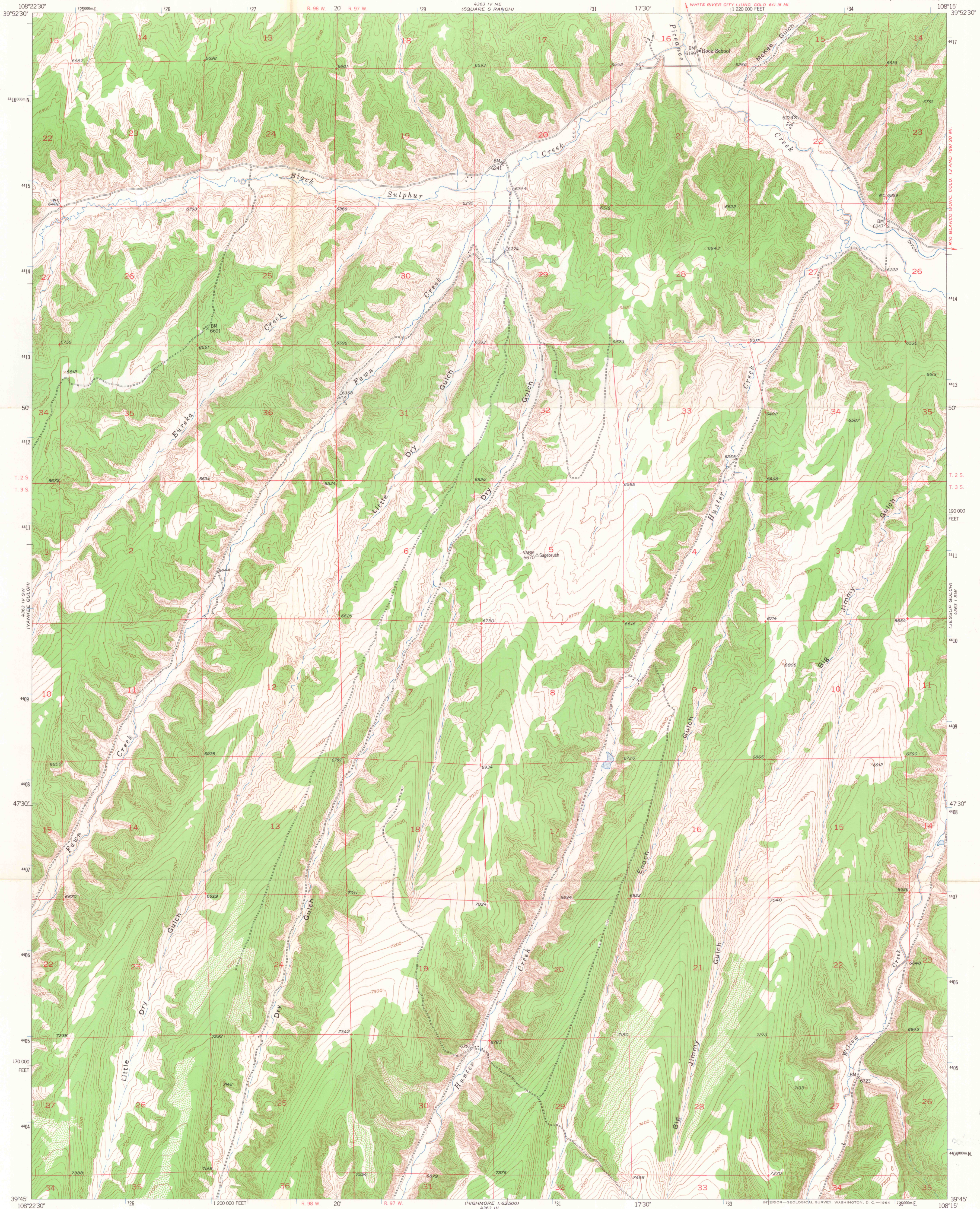
4363 IV NW
1/2000 FEET

UNITED STATES
DEPARTMENT OF THE INTERIOR
GEOLOGICAL SURVEY

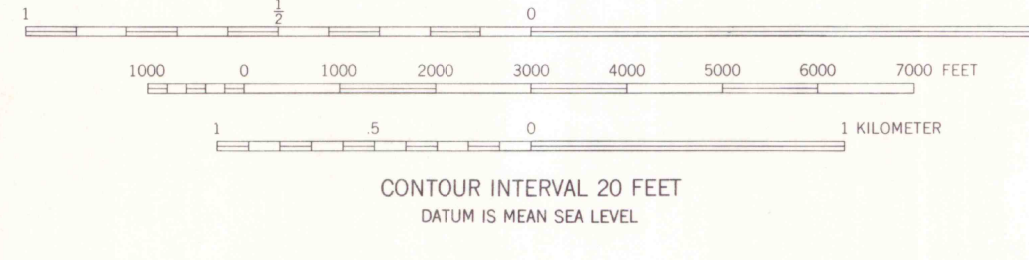
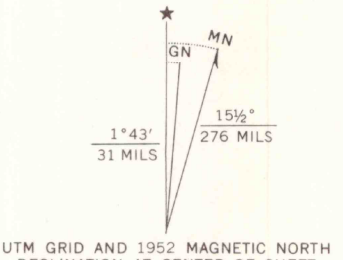
ALPINE RESCUE TEAM, INC.
P.O. BOX 824 • LYONS, CO. • 80540
(303) 534-2437

ROCK SCHOOL QUADRANGLE
COLORADO-RIO BLANCO CO.
7.5-MINUTE SERIES (TOPOGRAPHIC)

4363 IV NW
1/2000 FEET



Mapped, edited, and published by the Geological Survey
Control by USGS and USC&GS
Topography from aerial photographs by multiplex methods
Aerial photographs taken 1948. Field check 1952
Polyconic projection. 1927 North American datum
10,000-foot grid based on Colorado coordinate system,
north zone
1000-meter Universal Transverse Mercator grid ticks,
zone 12, shown in blue



ROAD CLASSIFICATION
1964
Light-duty ——— Unimproved dirt - - - - -

ROCK SCHOOL, COLO.
N3945-W10815/7.5

1952

AMS 4363 IV SE-SERIES V877

THIS MAP COMPLIES WITH NATIONAL MAP ACCURACY STANDARDS
FOR SALE BY U. S. GEOLOGICAL SURVEY, DENVER 25, COLORADO OR WASHINGTON 25, D. C.
A FOLDER DESCRIBING TOPOGRAPHIC MAPS AND SYMBOLS IS AVAILABLE ON REQUEST

DEC 11 2006

8:00
104
LEAP ROOM