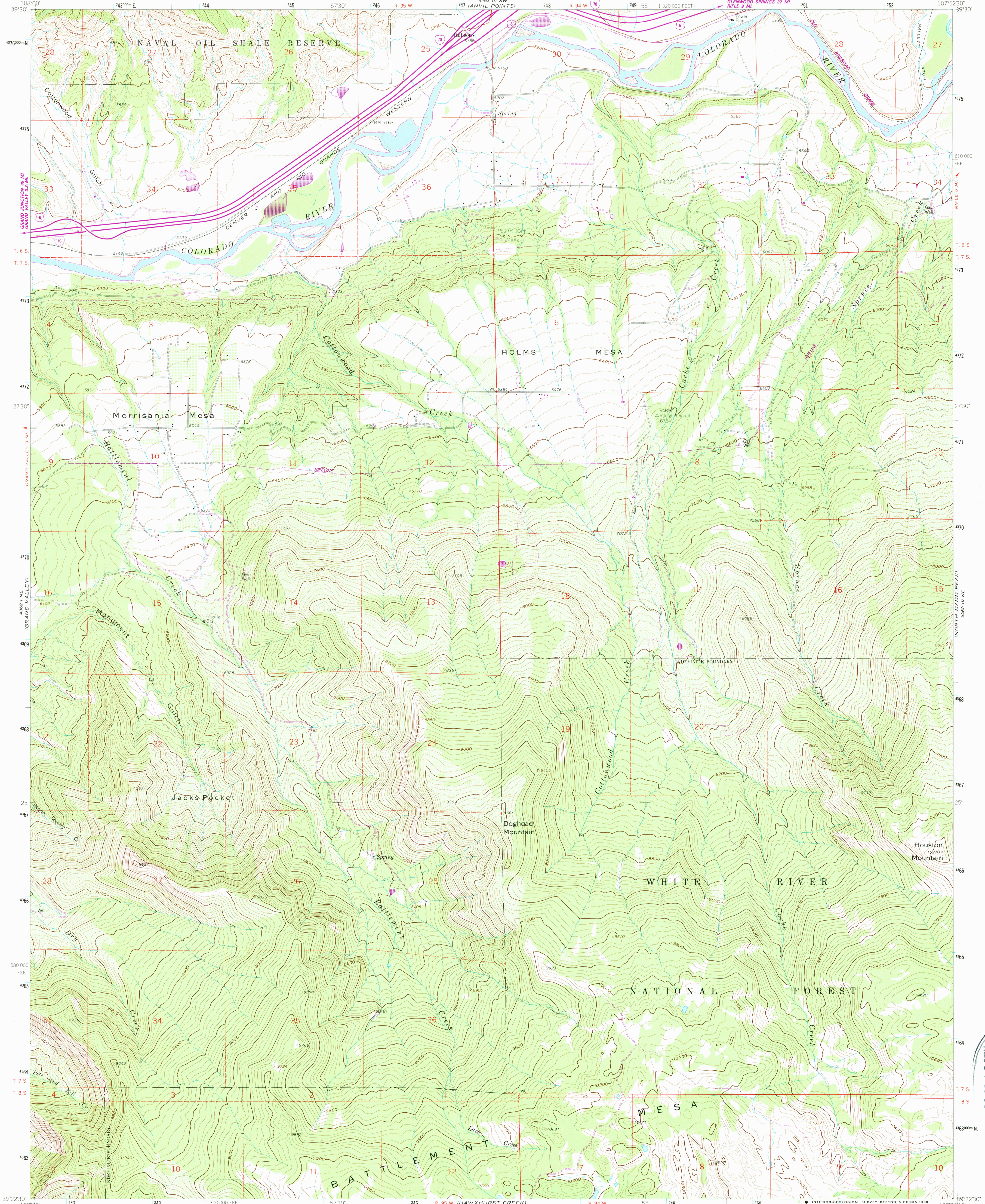
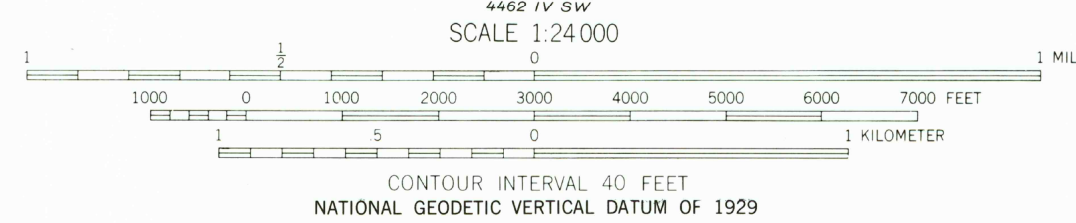
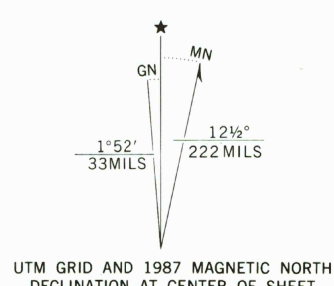


HOUSE TOP MTFN
468 SE

468 III SE
TRIFLE



Mapped, edited, and published by the Geological Survey
Control by USGS and NOS/NOAA
Topography by photogrammetric methods from aerial photographs taken 1956. Field checked 1960.
Polyconic projection. 1927 North American datum. 10 000-foot grid based on Colorado coordinate system, central zone 1000-meter Universal Transverse Mercator grid ticks, zone 13, shown in blue.
Where omitted, land lines have not been established. Fine red dashed lines indicate selected fence lines.
There may be private inholdings within the boundaries of the National or State reservations shown on this map.
To place on the predicted North American Datum 1983 move the projection lines 6 meters north and 55 meters east as shown by dashed corner ticks.



ROAD CLASSIFICATION

Primary highway, hard surface	Light-duty road, hard or improved surface
Secondary highway, hard surface	Unimproved road
Interstate Route	U. S. Route
	State Route

THIS MAP COMPLIES WITH NATIONAL MAP ACCURACY STANDARDS
FOR SALE BY U. S. GEOLOGICAL SURVEY, DENVER, COLORADO 80225, OR RESTON, VIRGINIA 22092
A FOLDER DESCRIBING TOPOGRAPHIC MAPS AND SYMBOLS IS AVAILABLE ON REQUEST

Revisions shown in purple and woodland compiled from aerial photographs taken 1983 and other source data. Partial field check by U. S. Forest Service. Map edited 1987

RULISON, COLO.
39107-D8-TF-024
1960
PHOTOREVISED 1987
DMA 4462 IV NW-SERIES V877

USGS (AMD) Internal Use Only
SEP 20 1988
REC'D FILE COPY

HOUSE TOP MTFN
468 SE

468 III SE
TRIFLE