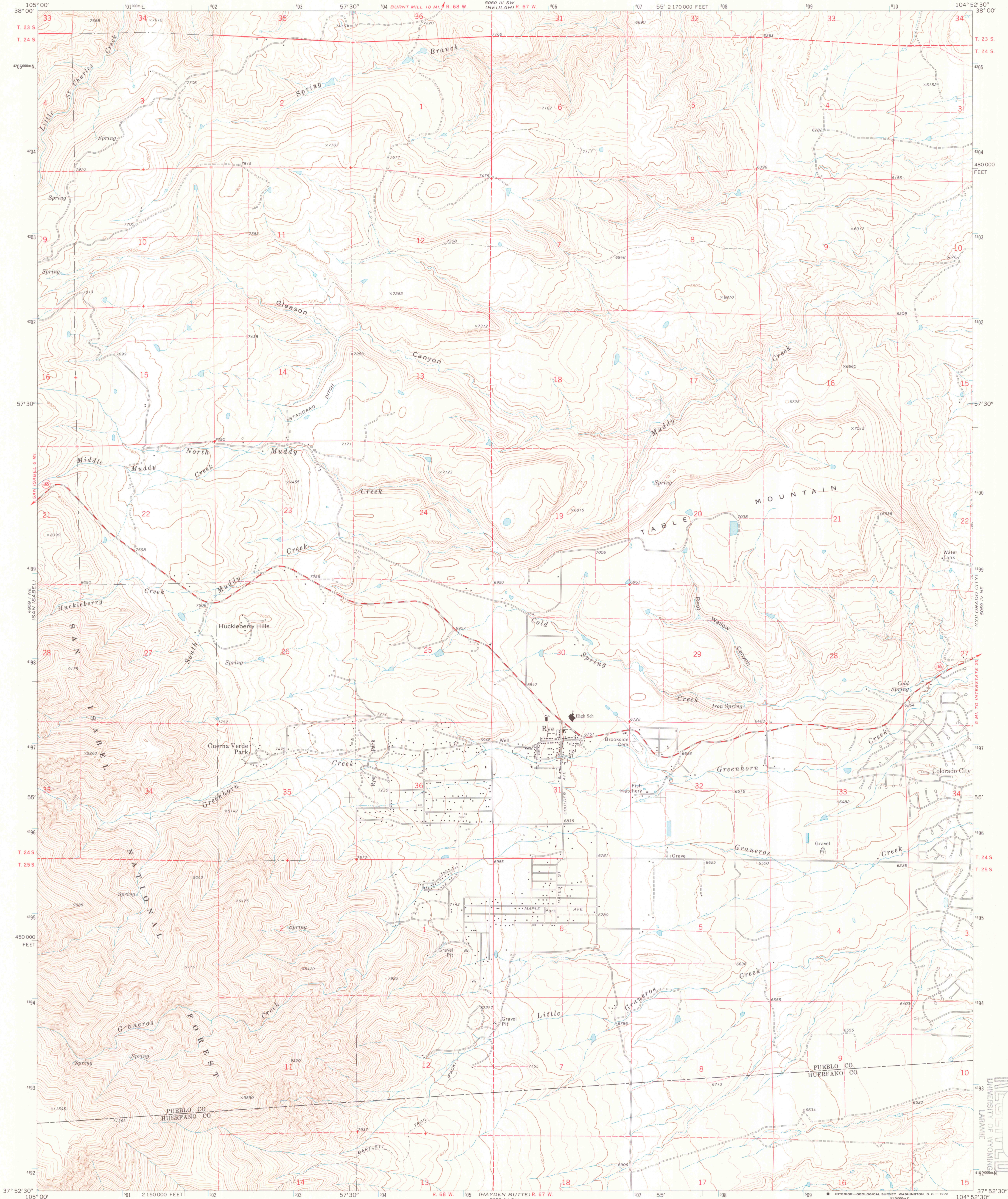
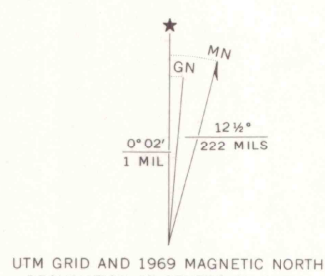


UNITED STATES
DEPARTMENT OF THE INTERIOR
GEOLOGICAL SURVEY

RYE QUADRANGLE
COLORADO
7.5 MINUTE SERIES (TOPOGRAPHIC)

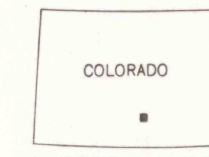


Maped, edited, and published by the Geological Survey
Control by USGS and USC&GS
Topography by photogrammetric methods from aerial
photographs taken 1968. Field checked 1969
Polyconic projection. 1927 North American datum
10,000-foot grid based on Colorado coordinate system,
south zone
1000-meter Universal Transverse Mercator grid ticks,
zone 13, shown in blue
Fine red dashed lines indicate selected fence lines
Where omitted, land lines have not been established



SCALE 1:24,000
CONTOUR INTERVAL 40 FEET
DATUM IS MEAN SEA LEVEL
THIS MAP COMPLIES WITH NATIONAL MAP ACCURACY STANDARDS
FOR SALE BY U.S. GEOLOGICAL SURVEY, DENVER, COLORADO 80225, OR WASHINGTON, D.C. 20242
A FOLDER DESCRIBING TOPOGRAPHIC MAPS AND SYMBOLS IS AVAILABLE ON REQUEST

ROAD CLASSIFICATION
Secondary highway, all weather, Light-duty road, all weather,
hard surface
Unimproved road, fair or dry
weather
State Route



OFFICE COPY
LIBRARY USE ONLY

RYE, COLO.
N3752.5-W10452.5/7.5

1969
AMS 5059 IV NW-SERIES V877

LIBRARY
DOCUMENT COLLECTION
DEC 18 1972
UNIVERSITY OF WYOMING
LARAMIE

63768