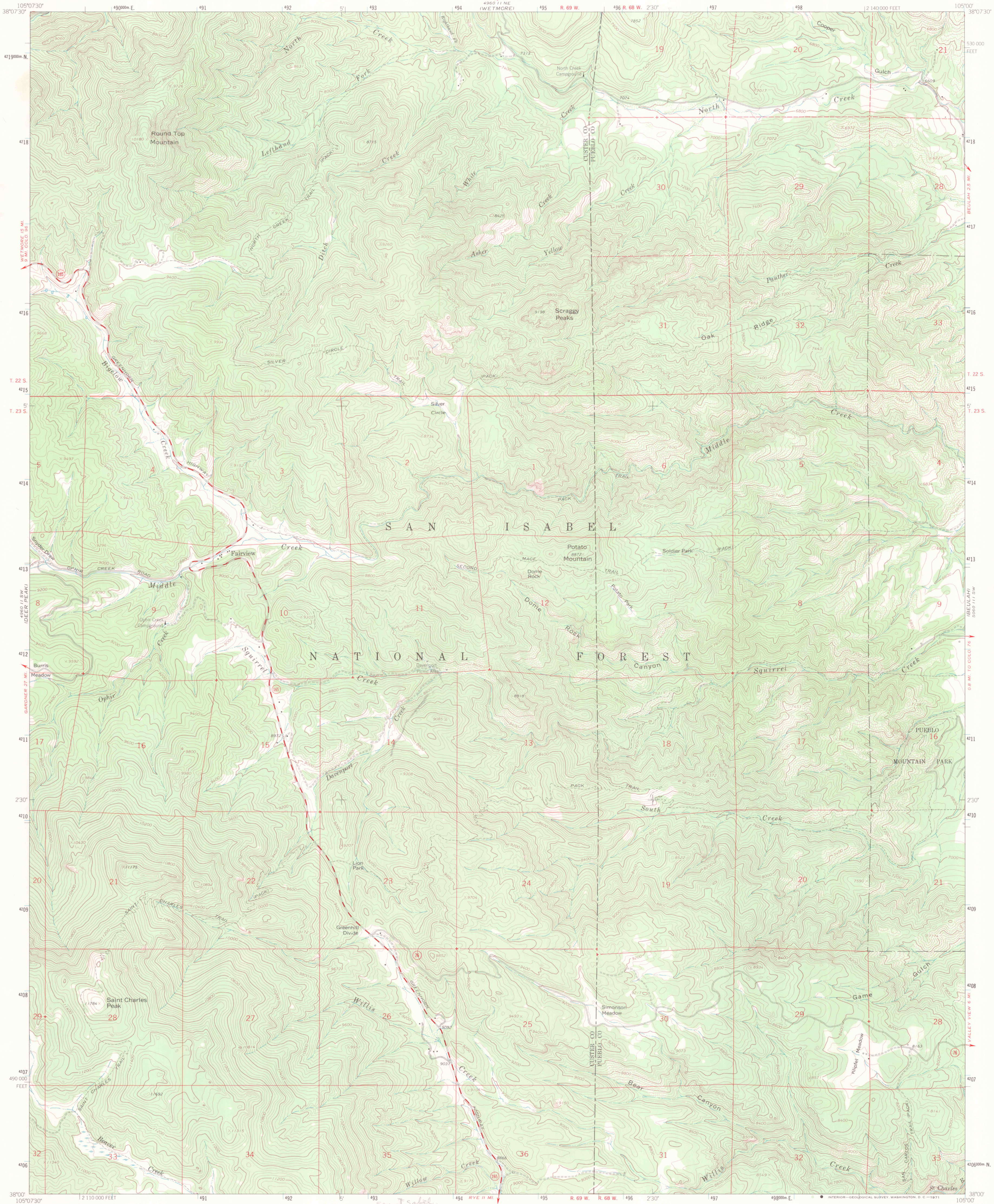
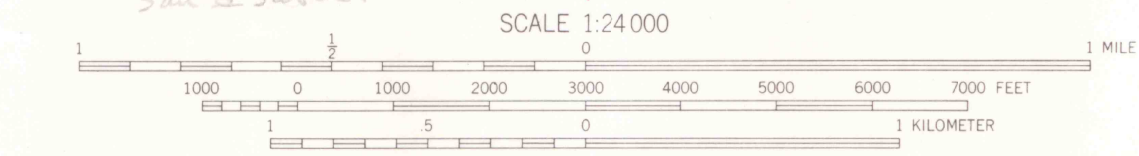
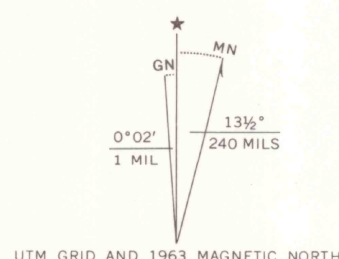


UNITED STATES  
DEPARTMENT OF THE INTERIOR  
GEOLOGICAL SURVEY

SAINT CHARLES PEAK QUADRANGLE  
COLORADO  
7.5 MINUTE SERIES (TOPOGRAPHIC)



Mapped, edited, and published by the Geological Survey  
Control by USGS and USC&GS  
Topography by photogrammetric methods from aerial  
photographs taken 1956. Field checked 1963  
Polyconic projection. 1927 North American datum  
10,000-foot grid based on Colorado coordinate system, south zone  
1000-meter Universal Transverse Mercator grid ticks,  
zone 13, shown in blue  
Certain land lines are omitted because of insufficient data



THIS MAP COMPLIES WITH NATIONAL MAP ACCURACY STANDARDS  
FOR SALE BY U.S. GEOLOGICAL SURVEY, DENVER, COLORADO 80225, OR WASHINGTON, D. C. 20242  
A FOLDER DESCRIBING TOPOGRAPHIC MAPS AND SYMBOLS IS AVAILABLE ON REQUEST



ROAD CLASSIFICATION  
Medium duty ——— Light-duty ———  
Unimproved dirt ———  
State Route

JAN 3 1968

SAINT CHARLES PEAK, COLO.  
N3800-W10500/7.5  
1963

AMS 4960 II SE-SERIES V877

OFFICE COPY  
LIBRARY USE ONLY

3700  
24  
.G4  
MAP ROOM