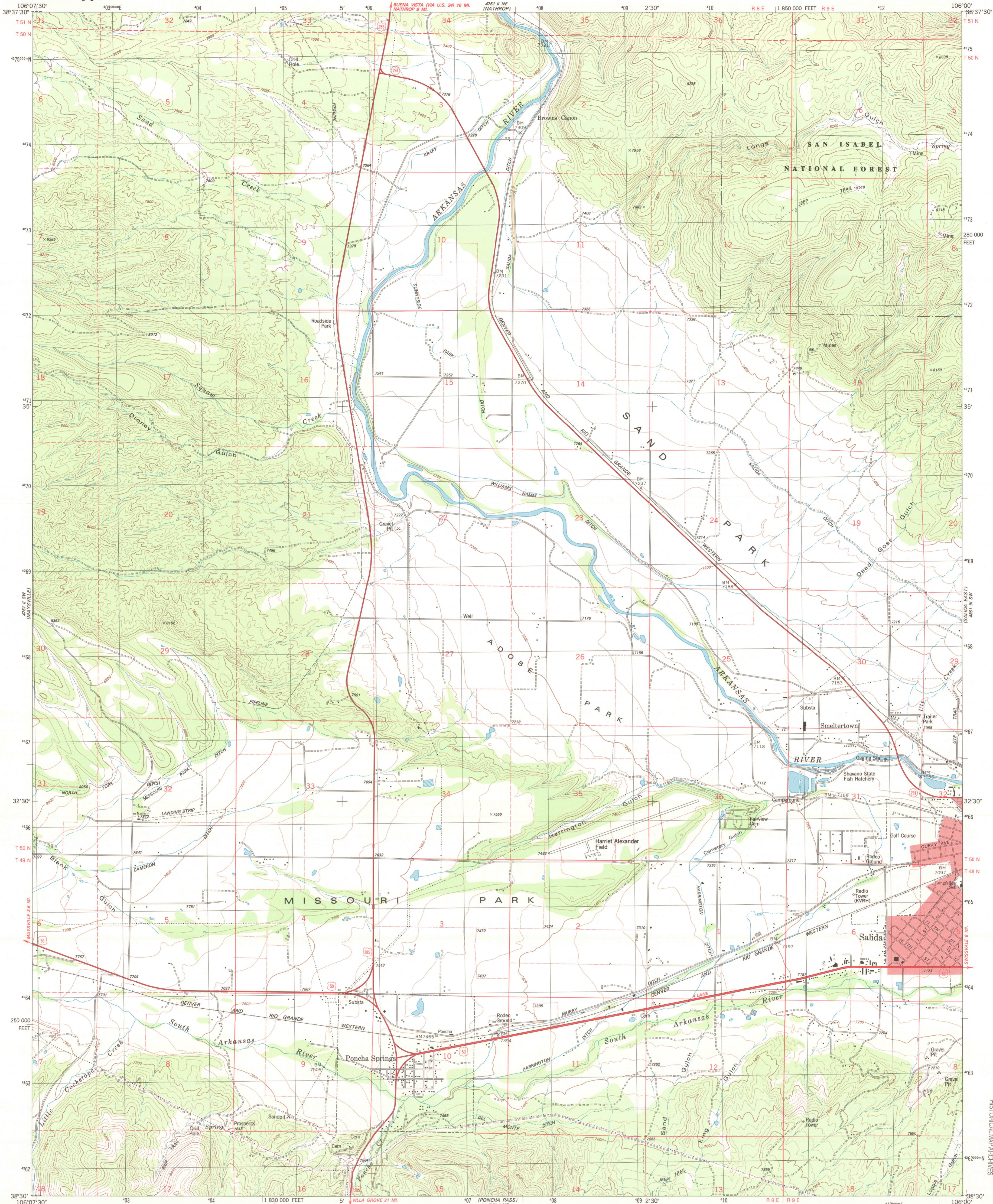




U.S. DEPARTMENT OF THE INTERIOR
U.S. GEOLOGICAL SURVEY

SALIDA WEST QUADRANGLE
COLORADO-CHAFFEE CO.
7.5 MINUTE SERIES (TOPOGRAPHIC)
SE/4 PONCHA SPRINGS 15' QUADRANGLE



Mapped, edited, and published by the Geological Survey

Control by USGS and NOS/NOAA

Topography by photogrammetric methods from aerial photographs taken 1975. Field checked 1976. Map edited 1983

Projection and 10,000-foot grid ticks: Colorado coordinate system, central zone (Lambert conformal conic)

1000-meter Universal Transverse Mercator grid, zone 13

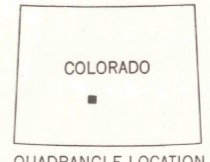
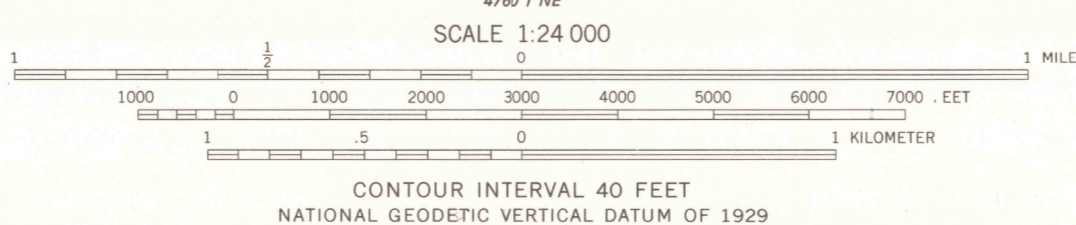
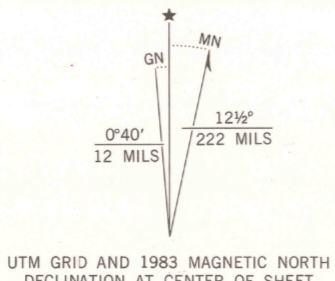
To place on the predicted North American Datum 1983

move the projection lines 4 meters north and

50 meters east as shown by dashed corner ticks

Fine red dashed lines indicate selected fence lines

There may be private inholdings within the boundaries of the National or State reservations shown on this map



ROAD CLASSIFICATION	
Primary highway, hard surface	Light-duty road, hard or improved surface
Secondary highway, hard surface	Unimproved road
Interstate Route	U. S. Route
	State Route

SALIDA WEST, COLO.
SE/4 PONCHA SPRINGS 15' QUADRANGLE
N3830-W10600/7.5

1983

DMA 4761 II SE-SERIES V877

HISTORICAL MAP ARCHIVES

DEC 31 1998

RECEIVED

