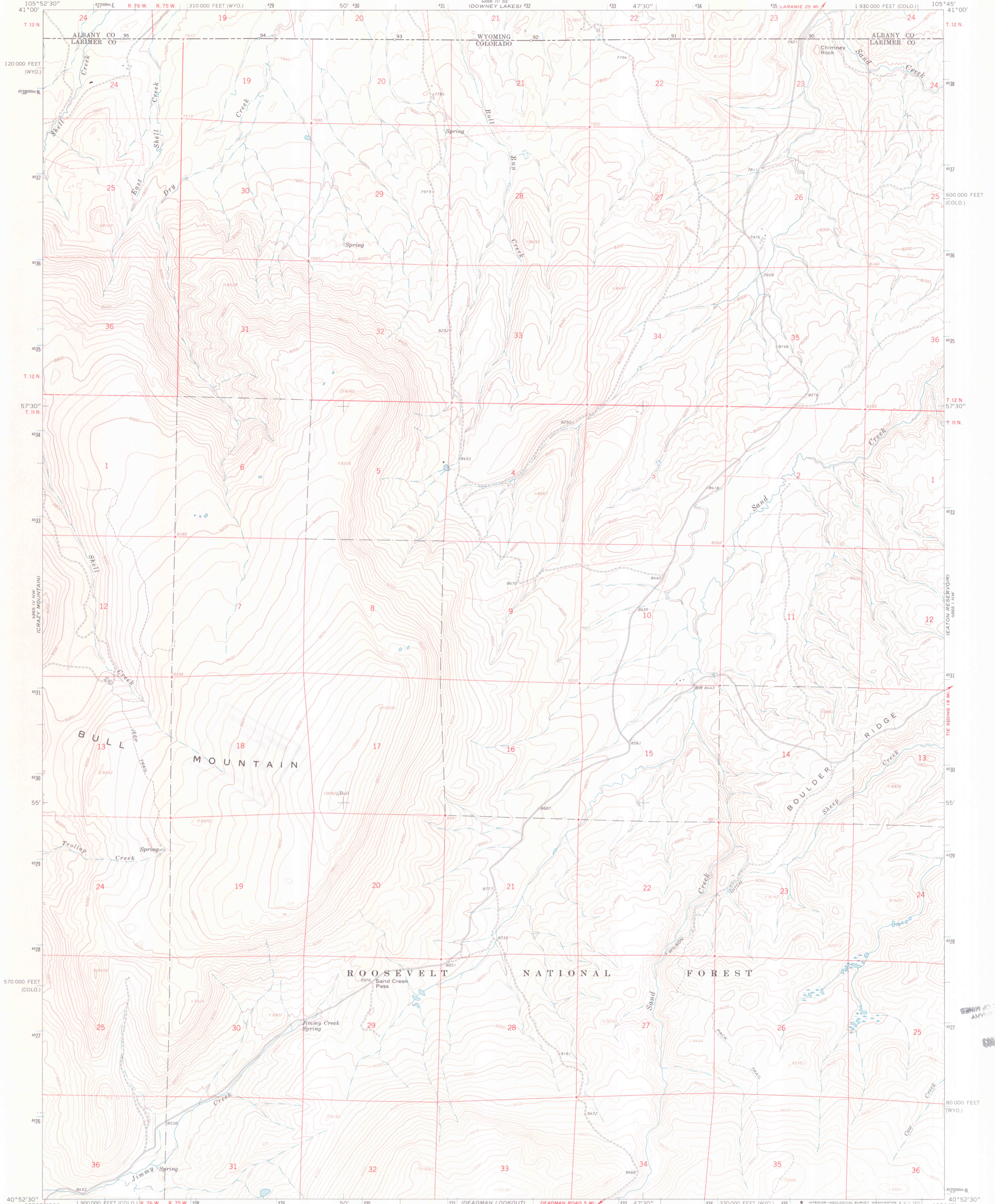
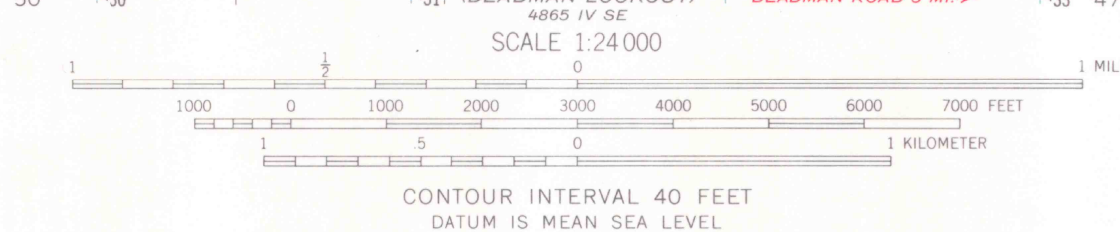
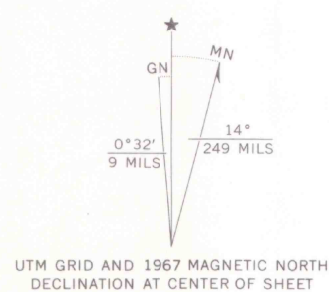


UNITED STATES  
DEPARTMENT OF THE INTERIOR  
GEOLOGICAL SURVEY

SAND CREEK PASS QUADRANGLE  
COLORADO—WYOMING  
7.5 MINUTE SERIES (TOPOGRAPHIC)



1 900 000 FEET (COLO.) R. 76 W. R. 75 W. 128  
Mapped, edited, and published by the Geological Survey  
Control by USGS and USC&GS  
Topography by photogrammetric methods from aerial  
photographs taken 1966. Field checked 1967  
Polyconic projection. 1927 North American datum  
10,000-foot grids based on Colorado coordinate system,  
north zone and Wyoming coordinate system, east zone  
1000-meter Universal Transverse Mercator grid ticks,  
zone 13, shown in blue  
Fine red dashed lines indicate selected fence lines  
T. 12 N., Sixth Principal Meridian, is duplicated in  
Colorado and Wyoming



ROAD CLASSIFICATION  
Light-duty Unimproved dirt  
Department of Geography and Geology  
Southwest Missouri State University  
Springfield, Missouri 65802  
SAND CREEK PASS, COLO.—WYO.  
N4052.5—W10545.7.5  
1967  
AMS 4865 IV NE—SERIES V877

NOV 25 1967  
G 3700  
s24  
G4  
MAP ROOM  
s24