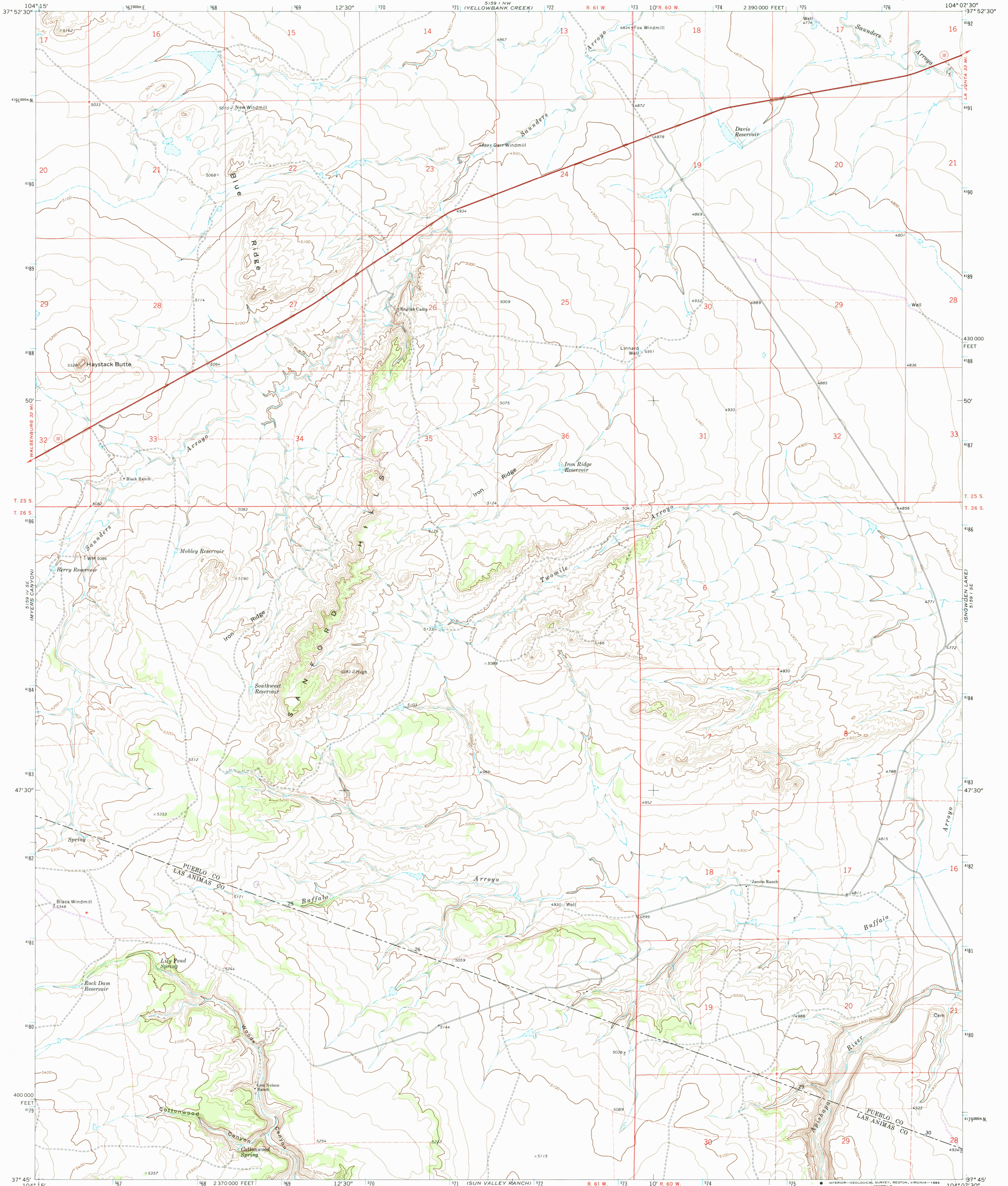
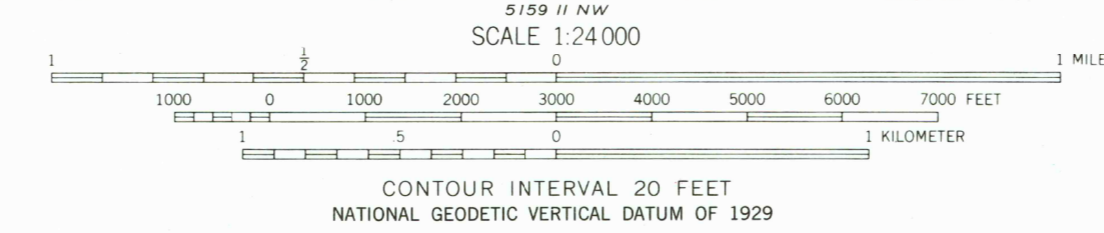
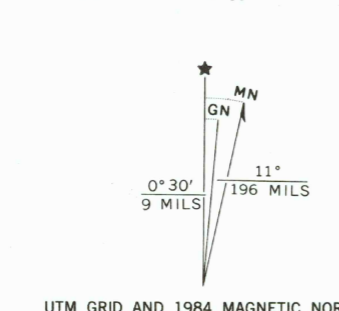


UNITED STATES
DEPARTMENT OF THE INTERIOR
GEOLOGICAL SURVEY

SANFORD HILLS QUADRANGLE
COLORADO
7.5 MINUTE SERIES (TOPOGRAPHIC)



Mapped, edited, and published by the Geological Survey
Control by USGS and NOS/NOAA
Topography by photogrammetric methods from aerial photographs taken 1969. Field checked 1970
Projection and 10,000-foot ticks: Colorado coordinate system, south zone (Lambert conformal conic) 1000-meter Universal Transverse Mercator grid ticks, zone 13, shown in blue. 1927 North American Datum
Fine red dashed lines indicate selected fence lines
Certain land lines are omitted because of insufficient data
All recovered corners are shown
To place on the predicted North American Datum 1983 move the projection lines 2 meters north and 46 meters east as shown by dashed corner ticks



ROAD CLASSIFICATION

Primary highway, hard surface	Light-duty road, hard or improved surface
Secondary highway, hard surface	Unimproved road

Legend for road types:
Interstate Route (thick red line with white border)
U.S. Route (red line with white border)
State Route (thin red line with white border)

THIS MAP COMPLIES WITH NATIONAL MAP ACCURACY STANDARDS
FOR SALE BY U. S. GEOLOGICAL SURVEY, DENVER, COLORADO 80225, OR RESTON, VIRGINIA 22092
A FOLDER DESCRIBING TOPOGRAPHIC MAPS AND SYMBOLS IS AVAILABLE ON REQUEST

SANFORD HILLS, COLO.
37104-G2-TF-024
1970
PHOTOREVISED 1984
DMA 5159 I SW—SERIES V877