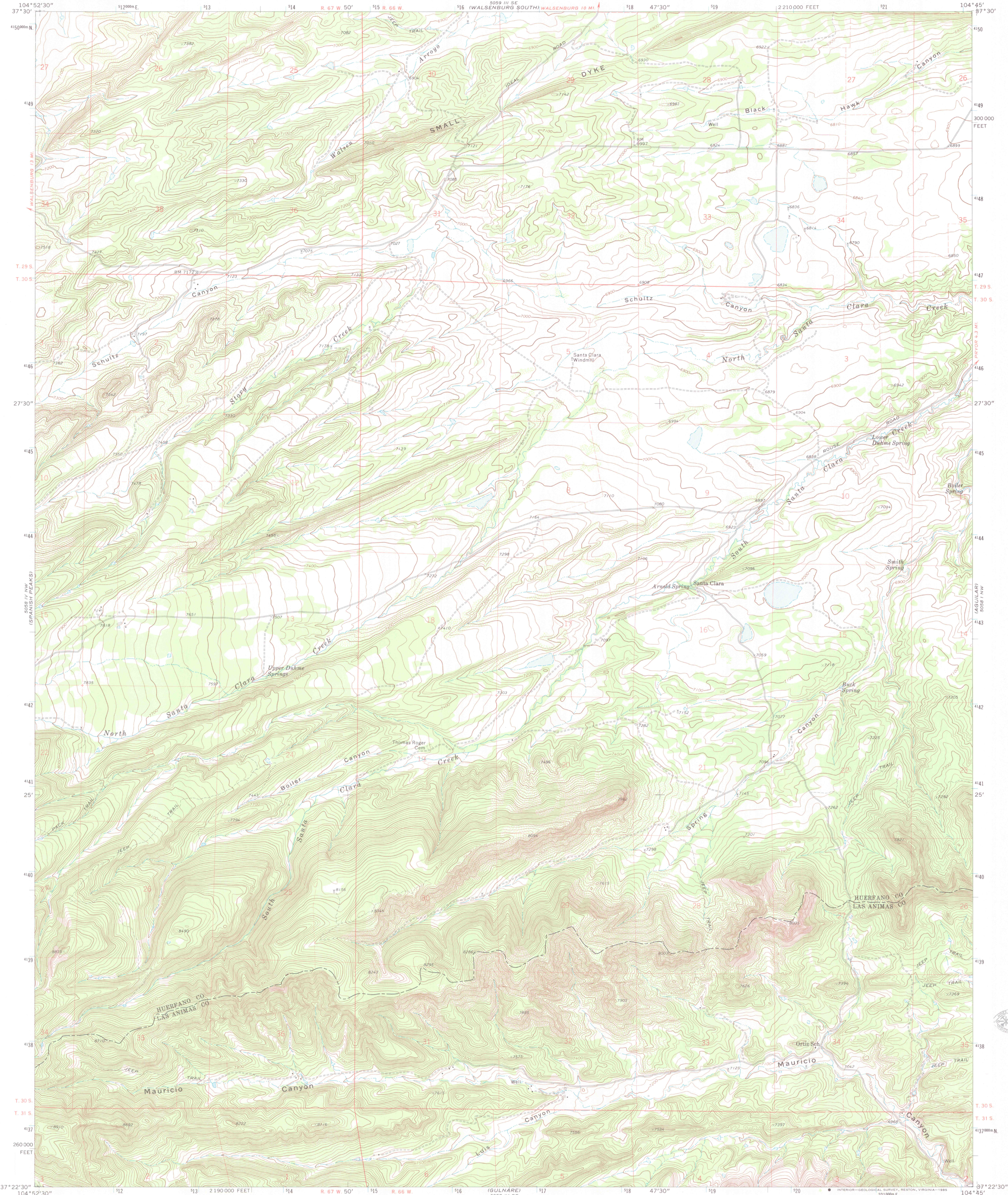
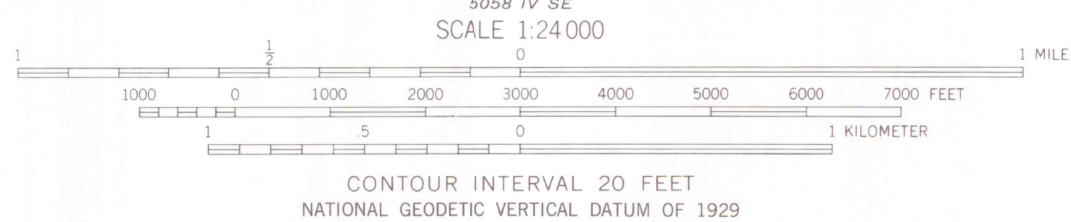
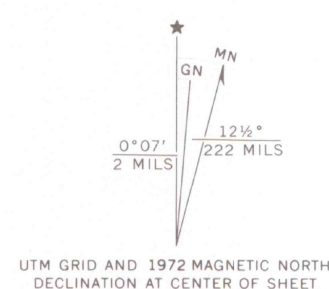


UNITED STATES  
DEPARTMENT OF THE INTERIOR  
GEOLOGICAL SURVEY

SANTA CLARA QUADRANGLE  
COLORADO  
7.5 MINUTE SERIES (TOPOGRAPHIC)



Mapped, edited, and published by the Geological Survey  
Control by USGS and USC&GS  
Topography by photogrammetric methods from aerial  
photographs taken 1970. Field checked 1972  
Projection and 10,000-foot grid ticks: Colorado  
coordinate system, south zone (Lambert conformal conic)  
1000-meter Universal Transverse Mercator grid ticks,  
zone 13, shown in blue. 1927 North American Datum  
Fine red dashed lines indicate selected fence lines  
To place on the predicted North American Datum 1983  
move the projection lines 2 meters north and  
47 meters east as shown by dashed corner ticks



ROAD CLASSIFICATION  
Primary highway, hard surface — Light-duty road, hard or improved surface  
Secondary highway, hard surface — Unimproved road  
Interstate Route U.S. Route State Route

THIS MAP COMPLIES WITH NATIONAL MAP ACCURACY STANDARDS  
FOR SALE BY U.S. GEOLOGICAL SURVEY, DENVER, COLORADO 80225, OR RESTON, VIRGINIA 22092  
A FOLDER DESCRIBING TOPOGRAPHIC MAPS AND SYMBOLS IS AVAILABLE ON REQUEST

SANTA CLARA, COLO.  
37104-07-TF-024

1972

DMA 5058 IV NE-SERIES V877

DEC 28 2006

MAP SCALE  
ARTHUR LAMBERT, 1840  
DENVER, COLORADO



C 3700  
24  
G4  
MAP ROOM