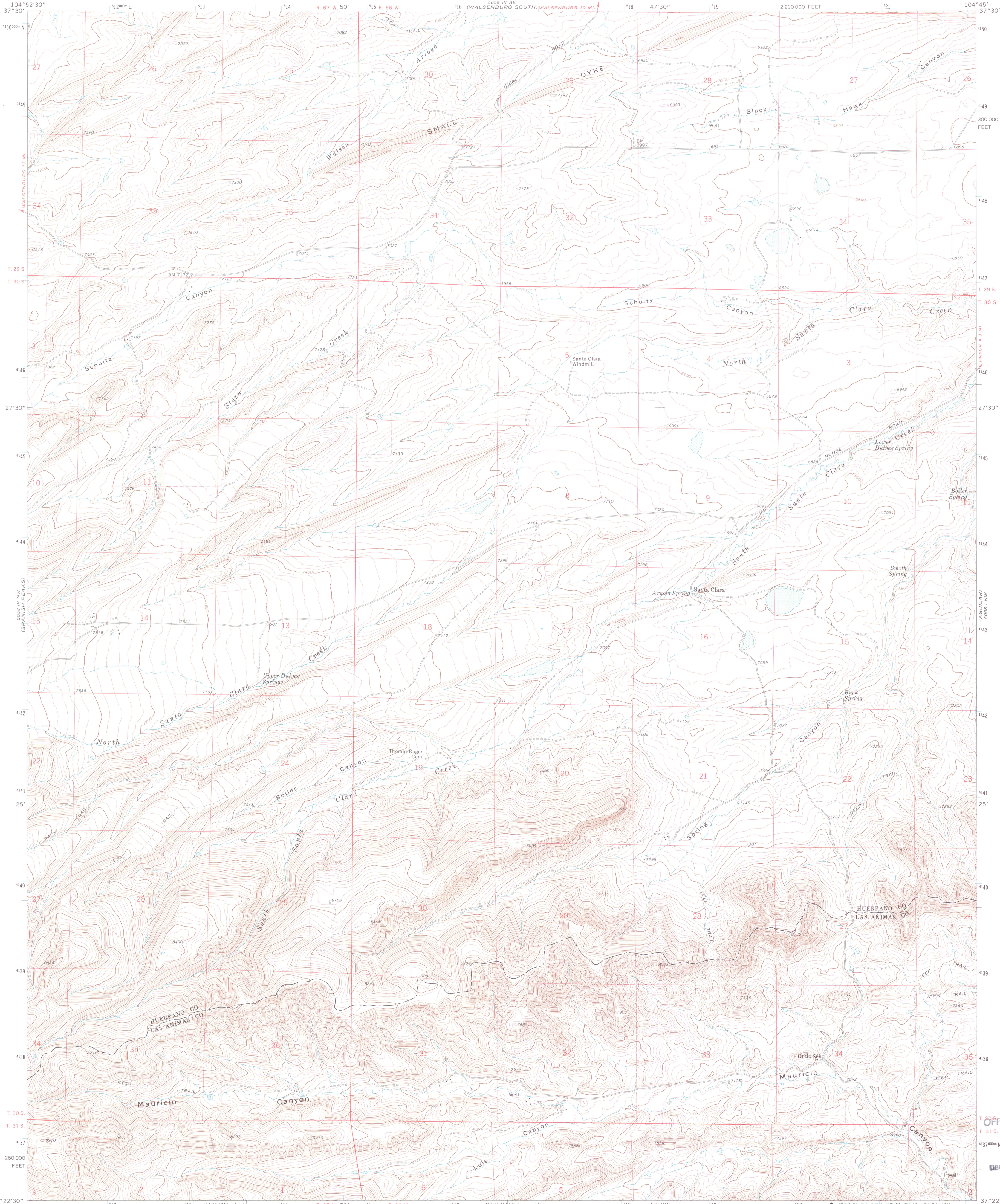
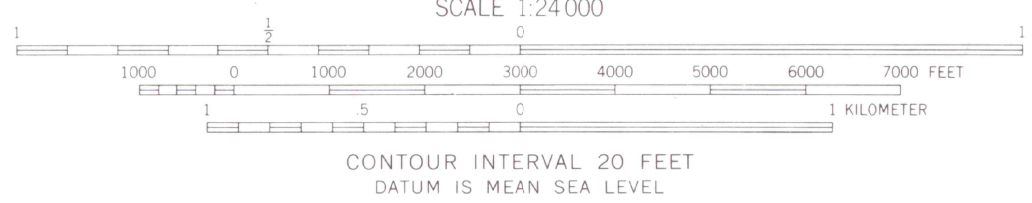
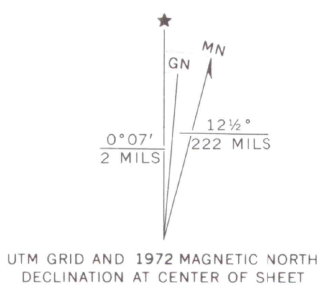


UNITED STATES
DEPARTMENT OF THE INTERIOR
GEOLOGICAL SURVEY

SANTA CLARA QUADRANGLE
COLORADO
7.5 MINUTE SERIES (TOPOGRAPHIC)



Mapped, edited, and published by the Geological Survey
Control by USGS and USC&GS
Topography by photogrammetric methods from aerial
photographs taken 1970. Field checked 1972
Projection and 10,000-foot grid ticks: Colorado
coordinate system, south zone (Lambert conformal conic)
1000-meter Universal Transverse Mercator grid ticks,
zone 13, shown in blue. 1927 North American datum
Fine red dashed lines indicate selected fence lines



ROAD CLASSIFICATION
Primary highway, hard surface ——— Light-duty road, hard or improved surface ———
Secondary highway, hard surface ——— Unimproved road ———
Interstate Route — U. S. Route — State Route —

LIBRARY
COLORADO SCHOOL OF MINES
GOLDEN, COLORADO

SANTA CLARA, COLO.
N3722.5-W10445/7.5
1972
AMS 5058 IV NE-SERIES V877



G 3701
C222
S24
U5