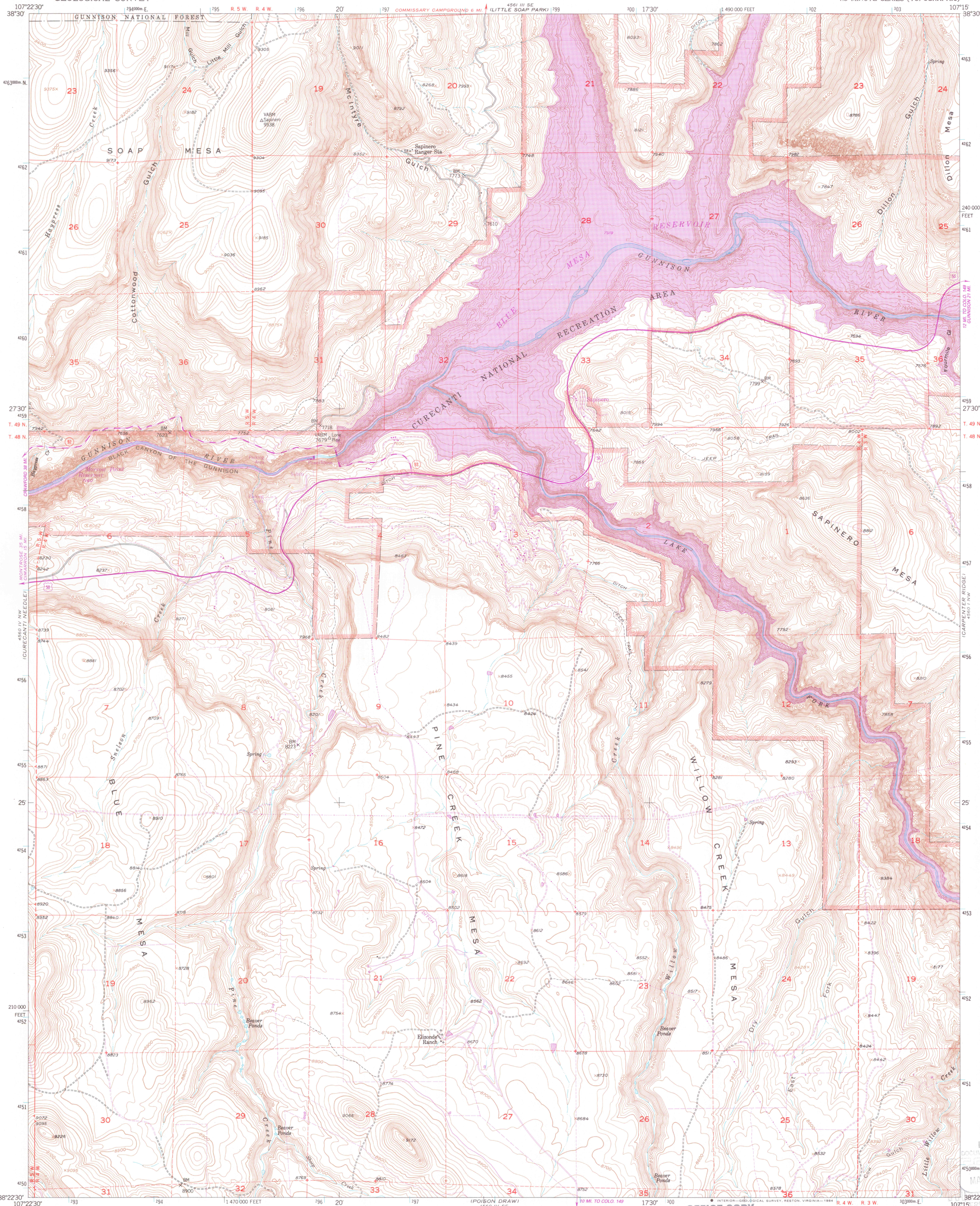


UNITED STATES
DEPARTMENT OF THE INTERIOR
GEOLOGICAL SURVEY

SAPINERO QUADRANGLE
COLORADO-GUNNISON CO.
7.5 MINUTE SERIES (TOPOGRAPHIC)



Mapped, edited, and published by the Geological Survey
Control by USGS, NOS/NOAA and USBR

Topography by photogrammetric methods from aerial photographs
taken 1950. Field check 1954

Polyconic projection. 1927 North American Datum
10,000-foot grid based on Colorado coordinate system,
central zone
1000-meter Universal Transverse Mercator grid ticks,
zone 13, shown in blue

Dashed land lines indicate approximate locations

To place on the predicted North American Datum 1983
move the projection lines 4 meters north and
54 meters east as shown by dashed corner ticks

There may be private inholdings within the boundaries
of the National or State reservations shown on this map

SCALE 1:24,000
CONTOUR INTERVAL 20 FEET
NATIONAL GEODETIC VERTICAL DATUM OF 1929

UTM GRID AND 1982 MAGNETIC NORTH
DECLINATION AT CENTER OF SHEET

THIS MAP COMPLIES WITH NATIONAL MAP ACCURACY STANDARDS
FOR SALE BY U. S. GEOLOGICAL SURVEY, DENVER, COLORADO 80225, OR RESTON, VIRGINIA 22092
A FOLDER DESCRIBING TOPOGRAPHIC MAPS AND SYMBOLS IS AVAILABLE ON REQUEST

OFFICE COPY
LIBRARY USE ONLY

QUADRANGLE LOCATION

Revisions shown in purple compiled from aerial photographs
taken 1978 and other source data. This information not
field checked. Map edited 1982

ROAD CLASSIFICATION
Heavy-duty ——— Light-duty ———
Medium-duty ——— Unimproved dirt ———
U. S. Route ——— State Route ———

GEOLOGICAL SURVEY OF WYOMING

SAPINERO, COLO.
38107-D3-TF-024

1954
PHOTOREVISED 1982
DMA 4560 IV NE-SERIES V877

LIBRARY
DOCUMENT COLLECTION
MAR 30 1985
UNIVERSITY OF WYOMING
LARAMIE