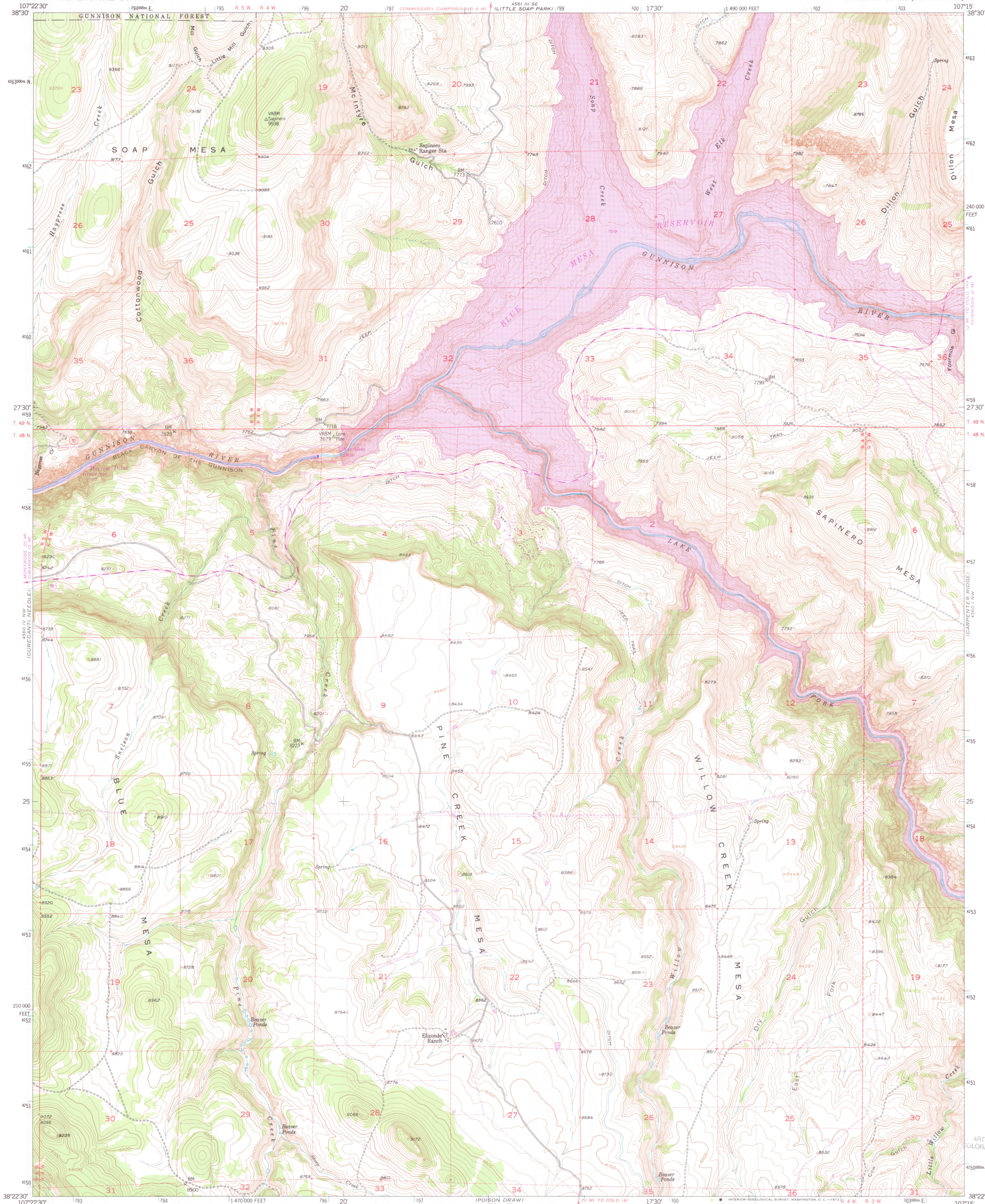
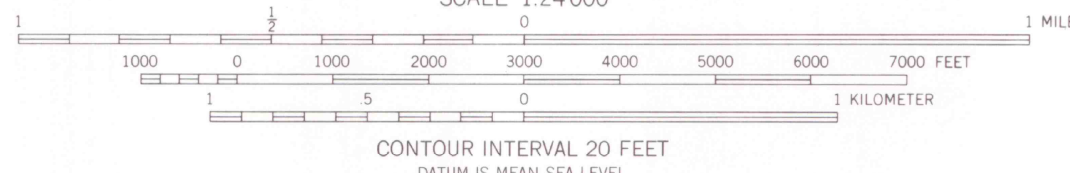
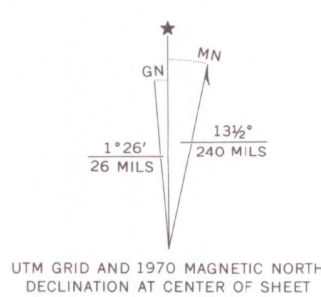


UNITED STATES
DEPARTMENT OF THE INTERIOR
GEOLOGICAL SURVEY

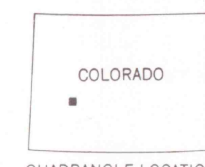
SAPINERO QUADRANGLE
COLORADO-GUNNISON CO.
7.5 MINUTE SERIES (TOPOGRAPHIC)



Mapped, edited, and published by the Geological Survey
Control by USGS, USC&GS and USBR
Topography by photogrammetric methods from aerial photographs
taken 1950. Field check 1954
Polyconic projection. 1927 North American datum
10,000-foot grid based on Colorado coordinate system,
central zone
1000-meter Universal Transverse Mercator grid ticks,
zone 13, shown in blue
Dashed land lines indicate approximate locations
Revisions shown in purple compiled from aerial photographs
taken 1970. This information not checked



ROAD CLASSIFICATION
Heavy-duty ————
Medium-duty ————
Light-duty ————
Unimproved dirt ————
U. S. Route
State Route



OFFICE COPY
LIBRARY USE ONLY

SAPINERO, COLO.
N3822.5—W10715/7.5

1954
PHOTOREVISED 1970
AMS 4560 IV NE—SERIES V877



JUL 14 1999
MAP ROOM
ARTHUR LAKES LIBRARY
COLORADO SCHOOL OF MINES

G 3700
s24
.G4
MAP ROOM