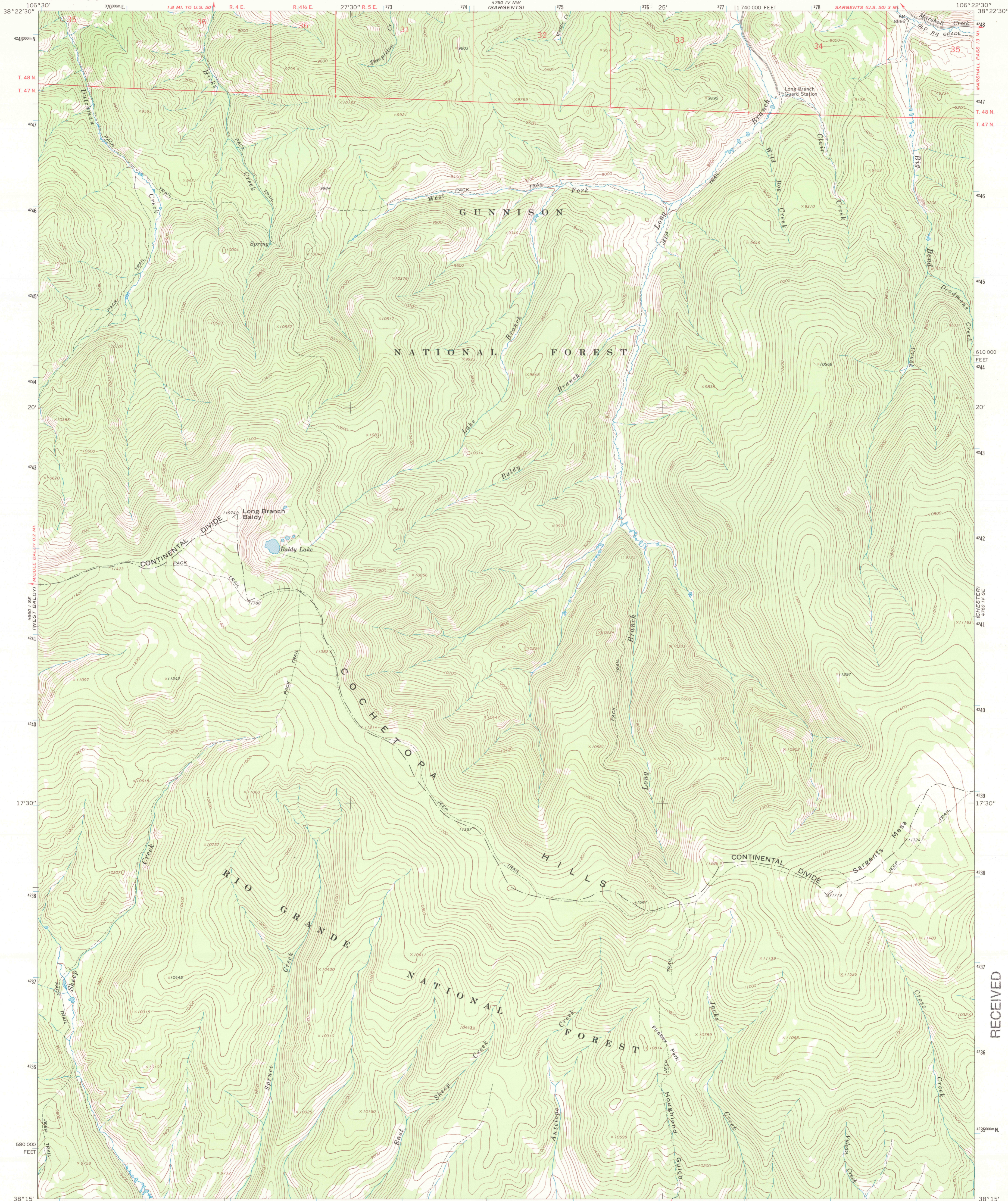


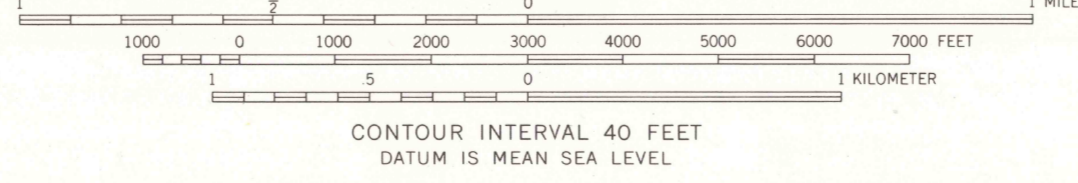
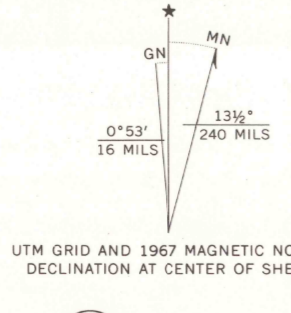


U.S. DEPARTMENT OF THE INTERIOR
U.S. GEOLOGICAL SURVEY

SARGENTS MESA QUADRANGLE
COLORADO—SAGUACHE CO.
7.5 MINUTE SERIES (TOPOGRAPHIC)



Mapped by the U.S. Forest Service
Edited and published by the Geological Survey
Control by USGS, USC&GS, and U.S. Forest Service
Topography by photogrammetric methods from aerial
photographs taken 1961. Field checked by USGS 1967
Polyconic projection, 1927 North American datum
10,000-foot grid based on Colorado coordinate system,
south zone
1000-meter Universal Transverse Mercator grid ticks,
zone 13, shown in blue
Certain land lines are omitted because of insufficient data



CONTOUR INTERVAL 40 FEET
DATUM IS MEAN SEA LEVEL



ROAD CLASSIFICATION
Light duty

SARGENTS MESA, COLO.
N3815—W10622.5/7.5

1967

AMS 4760 IV SW—SERIES V877

THIS MAP COMPLIES WITH NATIONAL MAP ACCURACY STANDARDS
FOR SALE BY U.S. GEOLOGICAL SURVEY, P.O. BOX 25286, DENVER, COLORADO 80225
A FOLDER DESCRIBING TOPOGRAPHIC MAPS AND SYMBOLS IS AVAILABLE ON REQUEST

RECEIVED
AUG 3 1 2001
HISTORICAL MAP ARCHIVES

