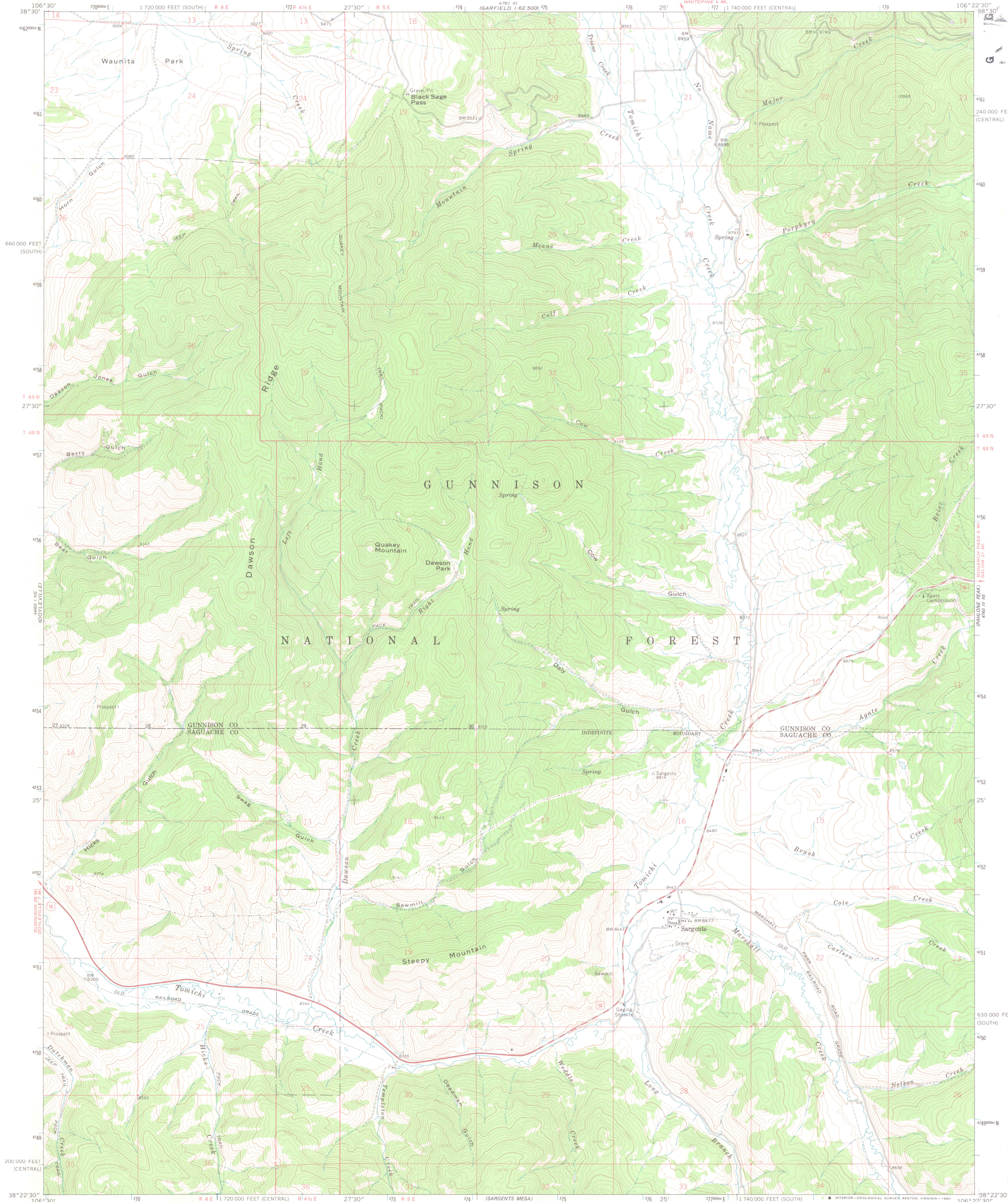
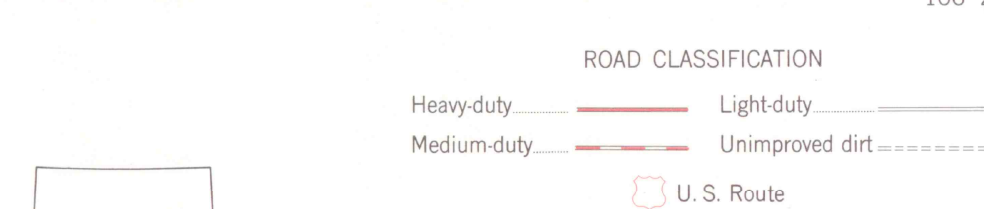
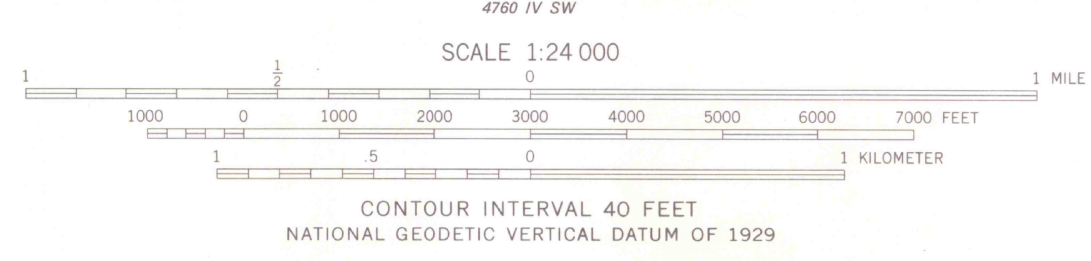
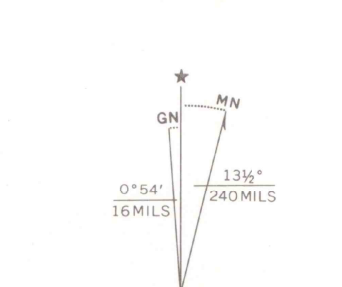


UNITED STATES  
DEPARTMENT OF THE INTERIOR  
GEOLOGICAL SURVEY

SARGENTS QUADRANGLE  
COLORADO  
7.5 MINUTE SERIES (TOPOGRAPHIC)



Maped, edited, and published by the Geological Survey  
in cooperation with State of Colorado agencies  
Control by USGS and USC&GS  
Topography by photogrammetric methods from aerial  
photographs taken 1962. Field checked 1964  
Polyconic projection. 1927 North American datum  
10,000-foot grids based on Colorado coordinate system,  
central and south zones  
1000-meter Universal Transverse Mercator grid ticks,  
zone 13, shown in blue  
Fine red dashed lines indicate selected fence lines  
There may be private inholdings within the boundaries of the  
National or State reservations shown on this map  
move the projection lines 4 meters north and  
51 meters east as shown by dashed corner ticks



THIS MAP COMPLIES WITH NATIONAL MAP ACCURACY STANDARDS  
FOR SALE BY U.S. GEOLOGICAL SURVEY, DENVER, COLORADO 80225, OR RESTON, VIRGINIA 22092  
A FOLDER DESCRIBING TOPOGRAPHIC MAPS AND SYMBOLS IS AVAILABLE ON REQUEST



OFFICE COPY  
LIBRARY USE ONLY  
SARGENTS, COLO.  
N3822.5-W10622.5/7.5  
1964  
DMA 4760 IV NW-SERIES V877

G 3700  
S24  
G4  
MAP ROOM

SEP 28 1981  
MAP ROOM  
ARTHUR LAKES LIBRARY