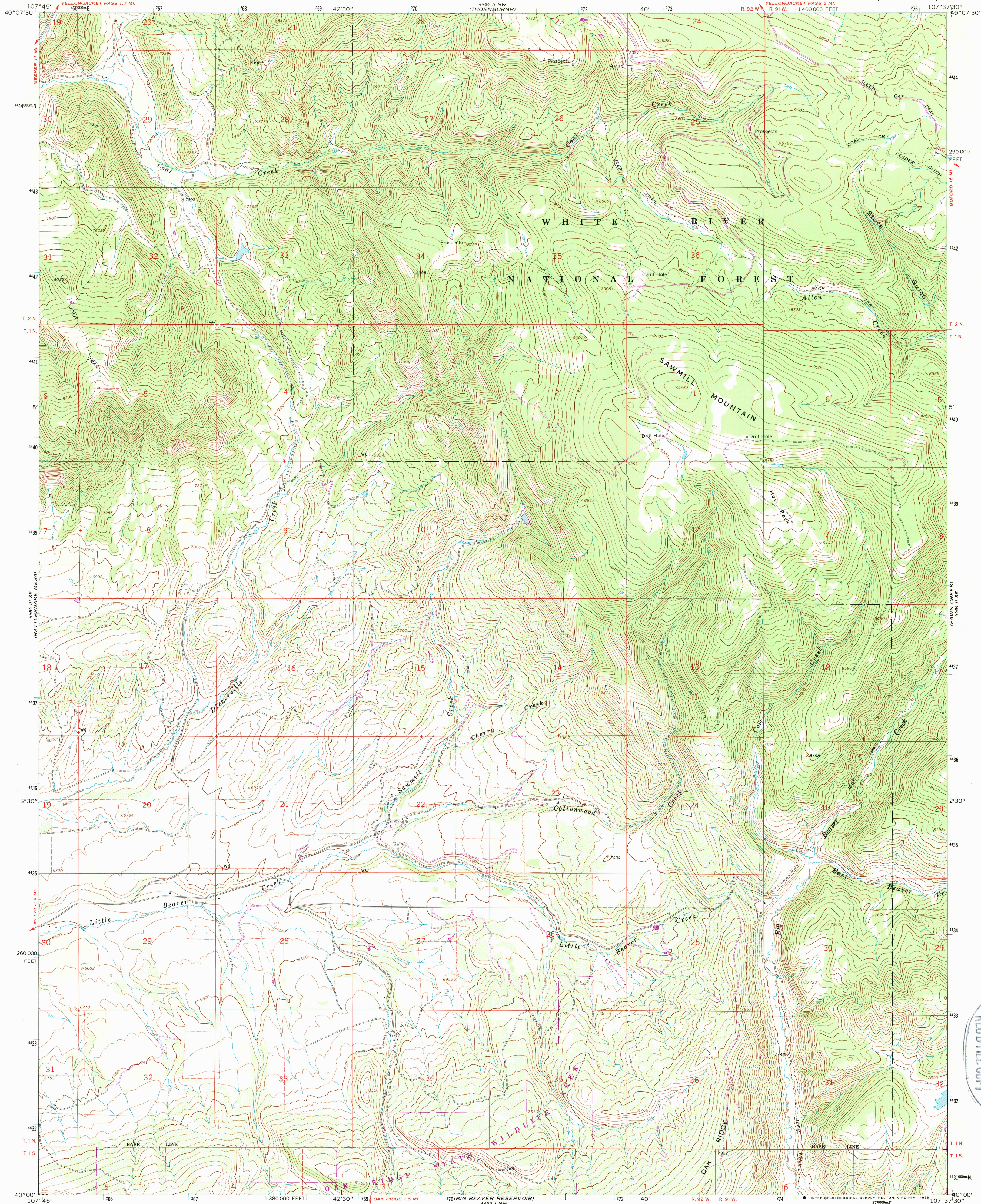


UNITED STATES  
DEPARTMENT OF THE INTERIOR  
GEOLOGICAL SURVEY

SAWMILL MOUNTAIN QUADRANGLE  
COLORADO—RIO BLANCO CO.  
7.5 MINUTE SERIES (TOPOGRAPHIC)



Mapped, edited, and published by the Geological Survey

Control by USGS and NOS/NOAA

Topography by photogrammetric methods from aerial photographs taken 1962. Field checked 1966.

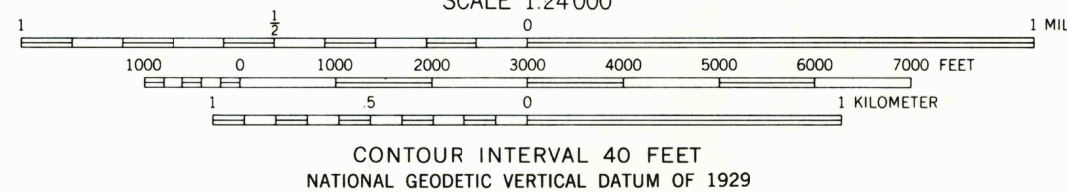
Polyconic projection. 1927 North American Datum 10,000-foot grid based on Colorado coordinate system, north zone 1000-meter Universal Transverse Mercator grid ticks, zone 13, shown in blue

Fine red dashed lines indicate selected fence lines

Where omitted, land lines have not been established

To place on the predicted North American Datum 1983 move the projection lines 6 meters north and 54 meters east as shown by dashed corner ticks

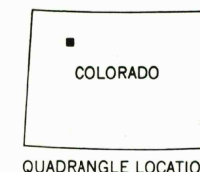
There may be private inholdings within the boundaries of the National or State reservations shown on this map



THIS MAP COMPLIES WITH NATIONAL MAP ACCURACY STANDARDS  
FOR SALE BY U.S. GEOLOGICAL SURVEY  
DENVER, COLORADO 80225, OR RESTON, VIRGINIA 22092  
A FOLDER DESCRIBING TOPOGRAPHIC MAPS AND SYMBOLS IS AVAILABLE ON REQUEST

Revisions shown in purple and woodland compiled from aerial photographs taken 1983 and other source data. Partial field check by U. S. Forest Service. Map edited 1987

ROAD CLASSIFICATION  
Light-duty ————— Unimproved dirt —————



SAWMILL MOUNTAIN, COLO.  
40107-A6-TF-024

1966  
PHOTOREVISED 1987  
DMA 4464 II SW—SERIES V877

U.S. GEOLOGICAL SURVEY  
MAY 20 1988  
RECD FILE COPY