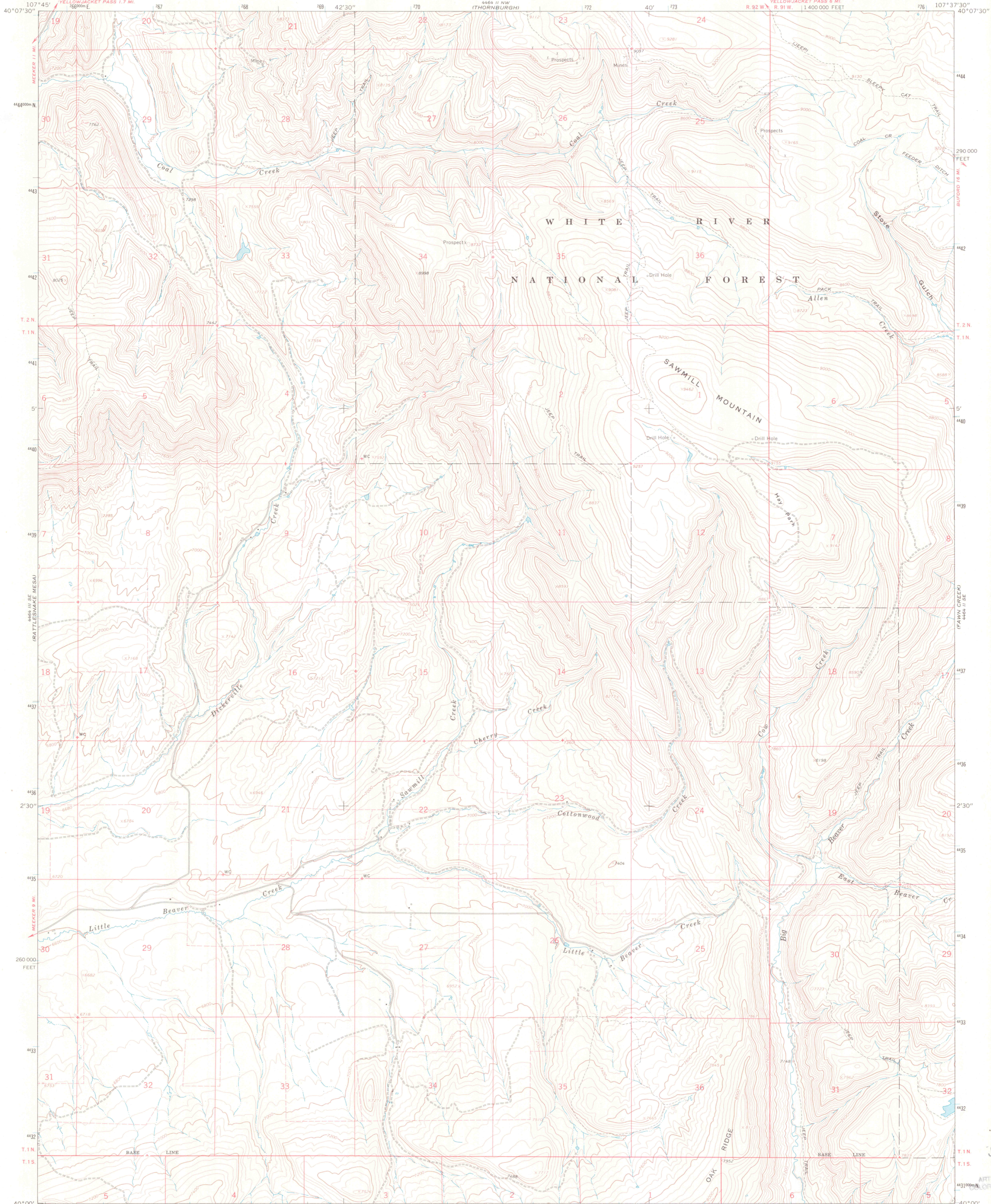


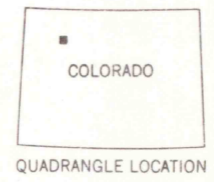
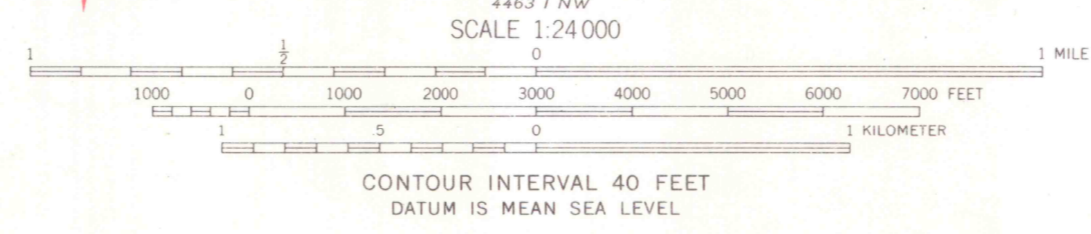
UNITED STATES
DEPARTMENT OF THE INTERIOR
GEOLOGICAL SURVEY

SAWMILL MOUNTAIN QUADRANGLE
COLORADO—RIO BLANCO CO.
7.5 MINUTE SERIES (TOPOGRAPHIC)



Mapped, edited, and published by the Geological Survey
Control by USGS and USC&GS
Topography by photogrammetric methods from aerial
photographs taken 1962. Field checked 1966.
Polyconic projection. 1927 North American datum
10,000-foot grid based on Colorado coordinate system,
north zone
1000-meter Universal Transverse Mercator grid ticks,
zone 13, shown in blue
Fine red dashed lines indicate selected fence lines
Where omitted, land lines have not been established

LIBRARY
DOCUMENT COLLECTION
MAR 16 1970
UNIVERSITY OF WYOMING



ROAD CLASSIFICATION
Light-duty ————— Unimproved dirt - - - - -

SAWMILL MOUNTAIN, COLO.
N4000—W10737.5/7.5

THIS MAP COMPLIES WITH NATIONAL MAP ACCURACY STANDARDS
FOR SALE BY U.S. GEOLOGICAL SURVEY, DENVER, COLORADO 80225, OR WASHINGTON, D.C. 20242
A FOLDER DESCRIBING TOPOGRAPHIC MAPS AND SYMBOLS IS AVAILABLE ON REQUEST

OFFICE COPY
LIBRARY USE ONLY

1966
AMS 4464 II SW—SERIES V877

JUL 06 2000
ARTHUR LAKES LIBRARY
COLORADO SCHOOL OF MINES

G3700
S24
.G4

G3700s
-C1
Und
w/d