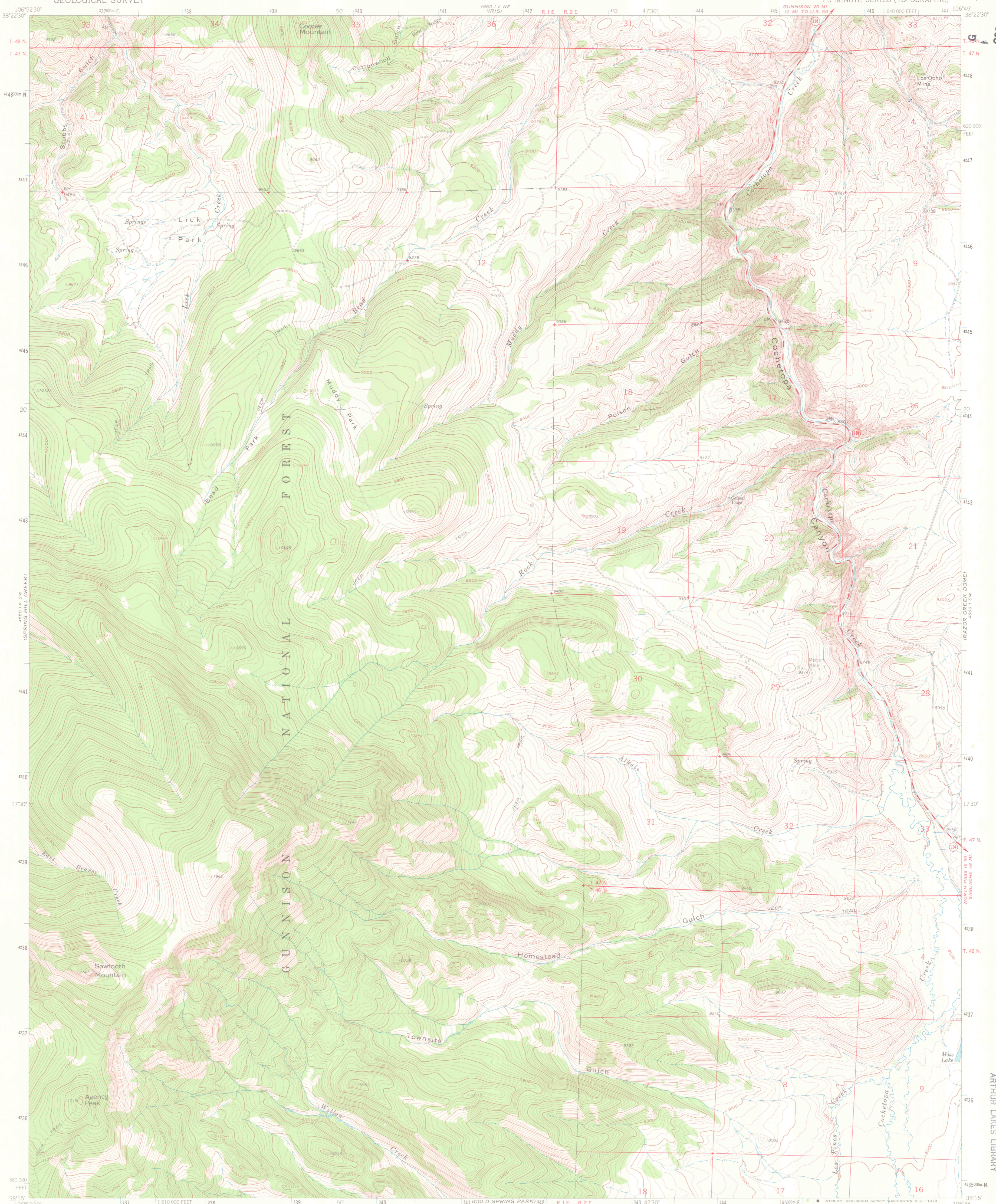
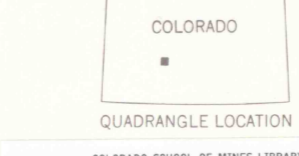
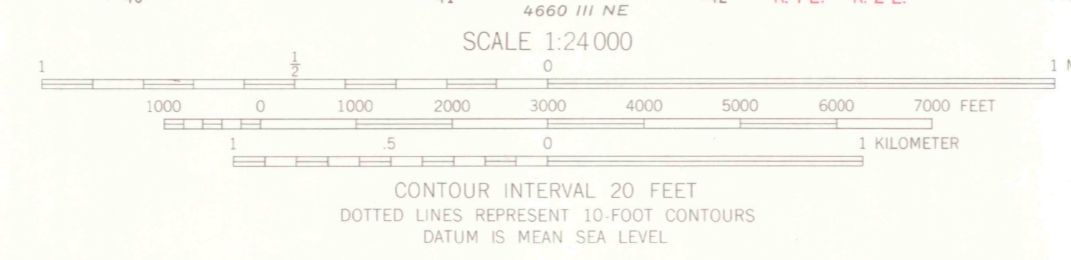
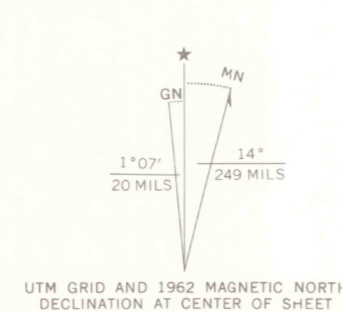


4660 IV NE
11925
C222
S24
U5
Sawtooth
mountain
1962
C-2



Mapped, edited, and published by the Geological Survey
Control by USGS and USC&GS
Topography by photogrammetric methods from aerial photographs taken 1956. Field checked 1962
Polyconic projection. 1927 North American datum. 10,000-foot grid based on Colorado coordinate system, south zone. 1000-meter Universal Transverse Mercator grid ticks zone 13, shown in blue.
Fine red dashed lines indicate selected fence lines.
Certain land lines are omitted because of insufficient data.



SAWTOOTH MOUNTAIN, COLO.
N3815-W10645/7.5

THIS MAP COMPLIES WITH NATIONAL MAP ACCURACY STANDARDS
FOR SALE BY U.S. GEOLOGICAL SURVEY, DENVER, COLORADO 80225, OR WASHINGTON, D.C. 20242
A FOLDER DESCRIBING TOPOGRAPHIC MAPS AND SYMBOLS IS AVAILABLE ON REQUEST



OFFICE COPY
LIBRARY USE ONLY

1962
4660 IV SE-SERIES V877

SEP 2 8 1981
MAP ROOM
ARTHUR LAKES LIBRARY
G 3 24
S24
U5
MAP ROOM