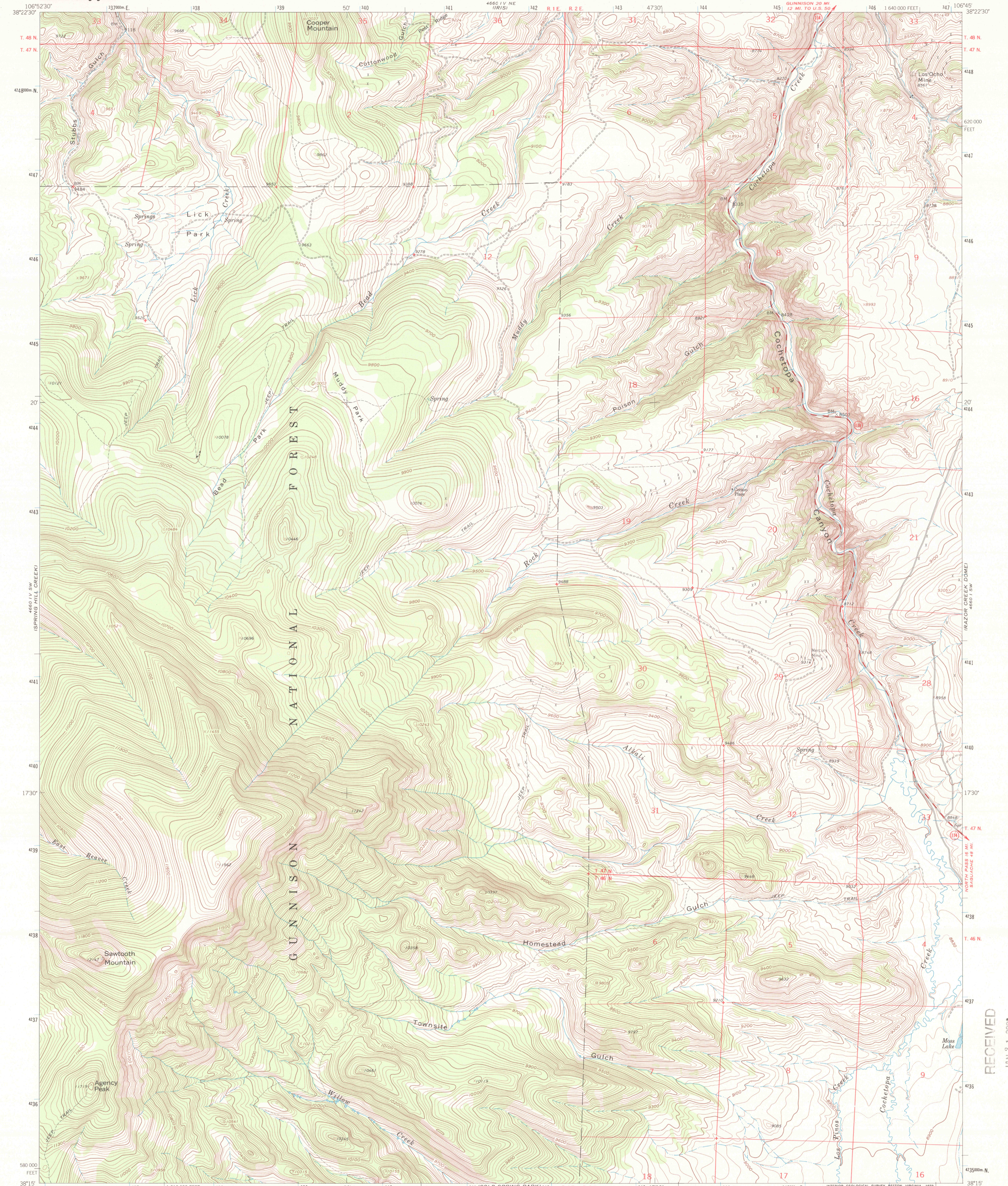


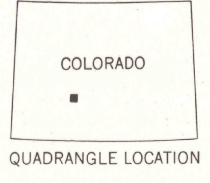
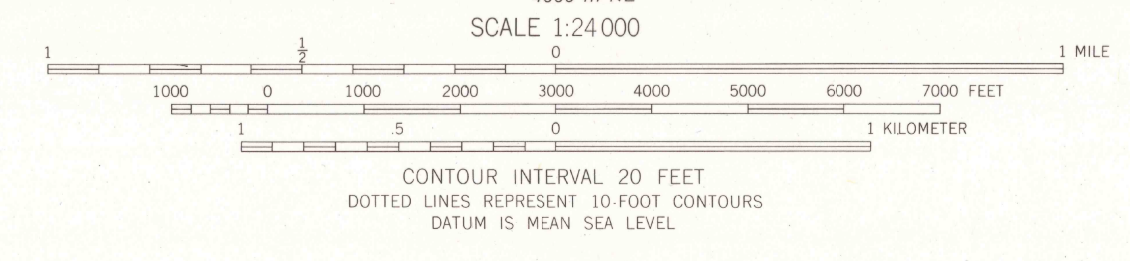
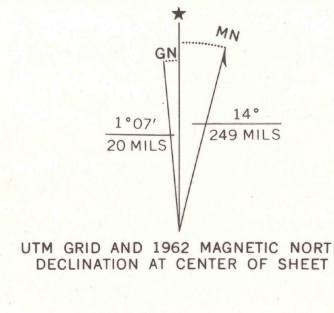


U.S. DEPARTMENT OF THE INTERIOR  
U.S. GEOLOGICAL SURVEY

SAWTOOTH MOUNTAIN QUADRANGLE  
COLORADO-SAGUACHE CO.  
7.5 MINUTE SERIES (TOPOGRAPHIC)



Mapped, edited, and published by the Geological Survey  
Control by USGS and USC&GS  
Topography by photogrammetric methods from aerial photographs taken 1956. Field checked 1962  
Polyconic projection. 1927 North American datum  
10,000-foot grid based on Colorado coordinate system, south zone  
1000 meter Universal Transverse Mercator grid ticks zone 13, shown in blue  
Fine red dashed lines indicate selected fence lines  
Certain land lines are omitted because of insufficient data



ROAD CLASSIFICATION

Medium-duty ——— Light-duty ———  
Unimproved dirt = = = = =  
State Route ○

THIS MAP COMPLIES WITH NATIONAL MAP ACCURACY STANDARDS  
FOR SALE BY U.S. GEOLOGICAL SURVEY, P.O. BOX 25286, DENVER, COLORADO 80225  
A FOLDER DESCRIBING TOPOGRAPHIC MAPS AND SYMBOLS IS AVAILABLE ON REQUEST

SAWTOOTH MOUNTAIN, COLO.  
N3815-W10645/7.5

1962  
AMS 4660 IV SE-SERIES V877

RECEIVED  
JAN 31 2008  
USGS/USGS  
HISTORICALMAP ARCHIVES

