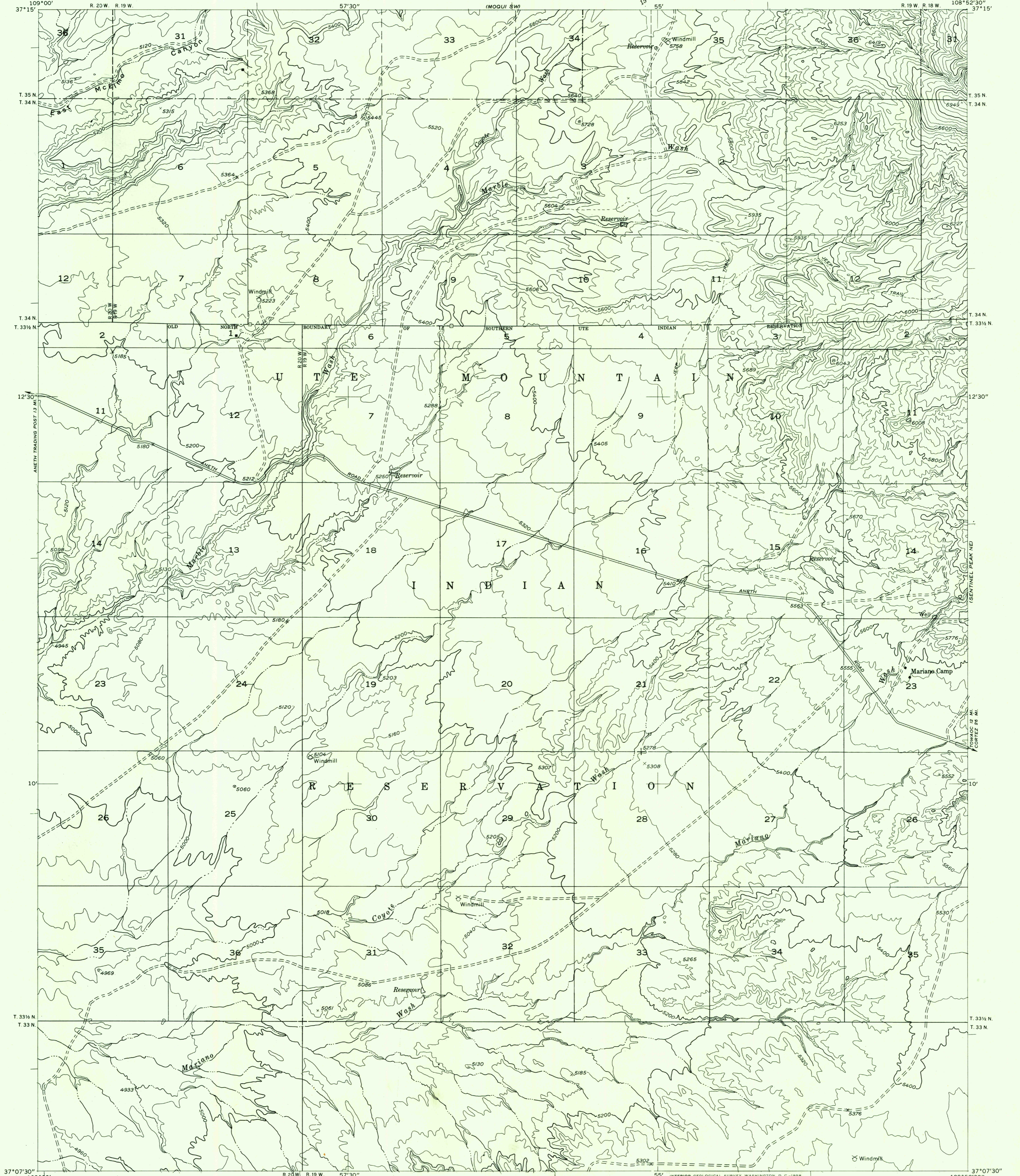
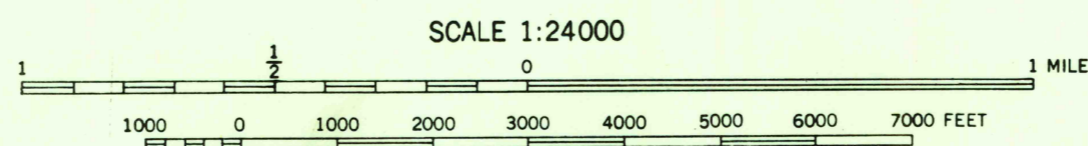
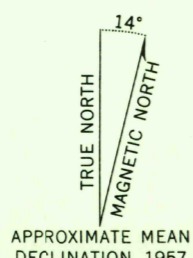


Preliminary edition
Pending completion of 1:62,500 scale
15 minute maps covering this area



Mapped by the Geological Survey 1957
Topography by Kelsh plotter from
aerial photographs taken 1955
Dashed land lines indicate approximate locations
Symbols and other detail herein
drawn for 1:62 500 scale publication



CONTOUR INTERVAL 40 FEET
DATUM IS MEAN SEA LEVEL

USGS
Historical File
Topographic Division

ROAD CLASSIFICATION
Improved ——— Unimproved - - - - -

U.S.G.S.
FILE COPY
TOPOGRAPHIC DIVISION

SENTINEL PEAK NW, COLO.
N3707.5—W10852.5/7.5

JUL 15 1958

1965