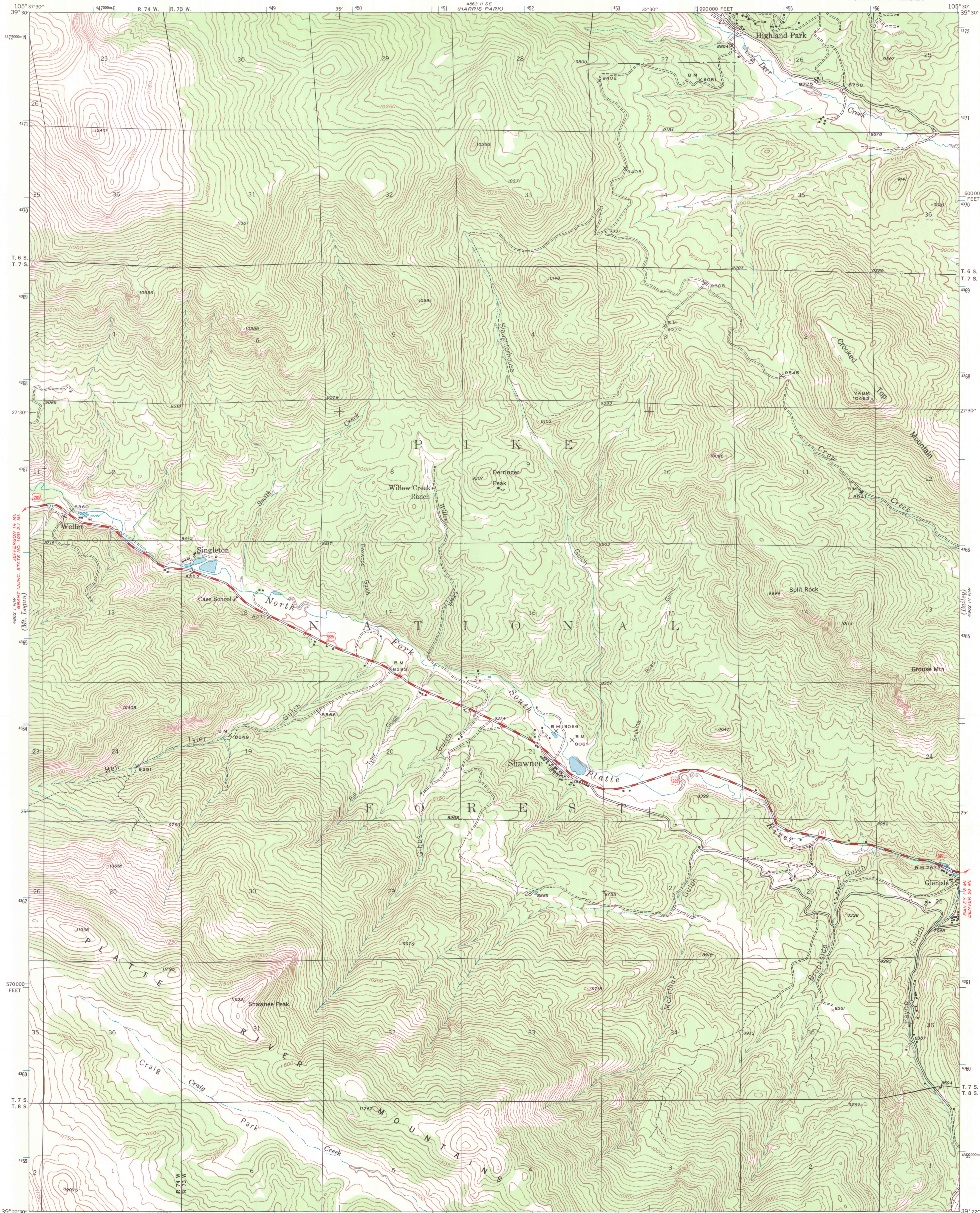


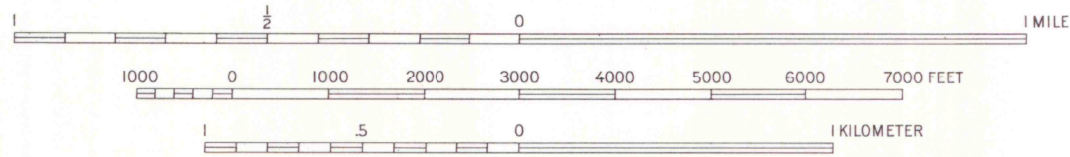
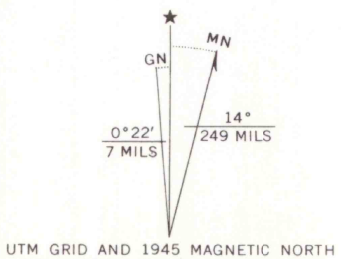
UNITED STATES
DEPARTMENT OF THE INTERIOR
GEOLOGICAL SURVEY

COLORADO
(PARK COUNTY)
SHAWNEE QUADRANGLE
7½-MINUTE SERIES



Maped by the Geological Survey
1945

ROAD CLASSIFICATION
Heavy-duty ——— Light-duty ———
Medium-duty ——— Unimproved dirt ———
U. S. Route State Route



CONTOUR INTERVAL 50 FEET
DATUM IS MEAN SEA LEVEL

THIS MAP COMPLIES WITH NATIONAL MAP ACCURACY STANDARDS
FOR SALE BY U. S. GEOLOGICAL SURVEY, DENVER, COLORADO 80225, OR WASHINGTON, D. C. 20242
A FOLDER DESCRIBING TOPOGRAPHIC MAPS AND SYMBOLS IS AVAILABLE ON REQUEST

Polyconic Projection. 1927 North American datum
100000 foot grid based on Colorado (Central)
rectangular coordinate system
1000-meter Universal Transverse Mercator grid ticks,
Zone 13, shown in blue

SHAWNEE, COLO.
N 3922.5 - W 10530.7.5

1945
AMS 4862 I NE-SERIES V877

LIBRARY USE ONLY

LIBRARY USE ONLY

G 3700
s24
.64
MAP ROOM