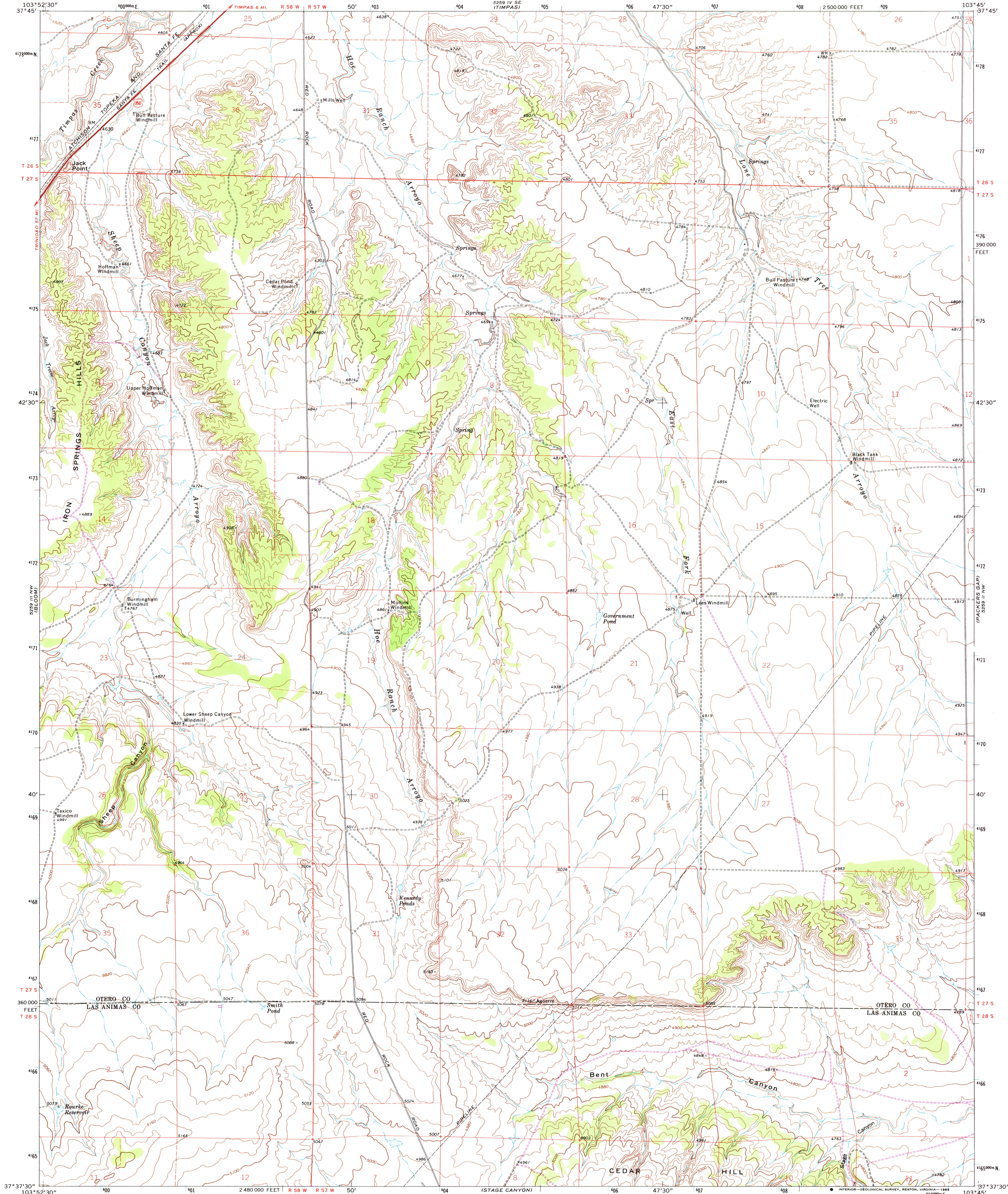
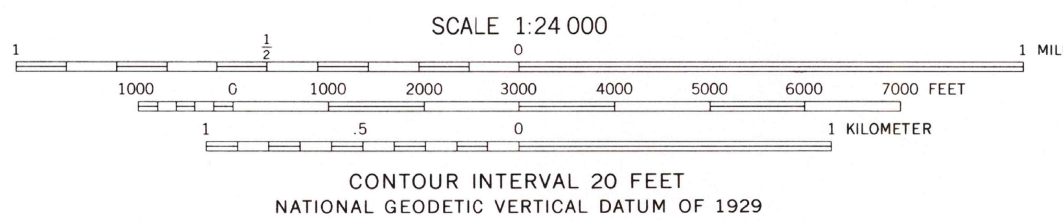
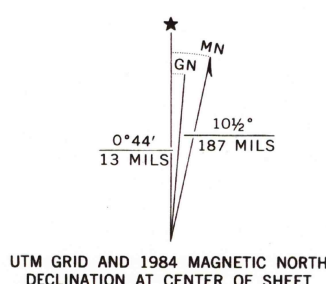


UNITED STATES
DEPARTMENT OF THE INTERIOR
GEOLOGICAL SURVEY

SHEEP CANYON QUADRANGLE
COLORADO
7.5 MINUTE SERIES (TOPOGRAPHIC)



Mapped, edited, and published by the Geological Survey
Control by USGS and NOS/NOAA
Topography by photogrammetric methods from aerial photographs taken 1971. Field checked 1972
Projection and 10,000-foot grid ticks: Colorado coordinate system, south zone (Lambert conformal conic)
1000-meter Universal Transverse Mercator grid ticks, zone 13, shown in blue. 1927 North American Datum
Fine red dashed lines indicate selected fence lines
To place on the predicted North American Datum 1983 move the projection lines 2 meters north and 45 meters east as shown by dashed corner ticks
Revisions shown in purple and woodland compiled from aerial photographs taken 1983 and other source data
This information not field checked. Map edited 1984



ROAD CLASSIFICATION	
Primary highway, hard surface	Light-duty road, hard or improved surface
Secondary highway, hard surface	Unimproved road
Interstate Route	U. S. Route
	State Route

SHEEP CANYON, COLO.
37103-F7-TF-024

1972
PHOTOREVISED 1984
DMA 5259 III NE-SERIES V877

RETURN TO :
USGS AND HISTORICAL MAP ARCHIVES