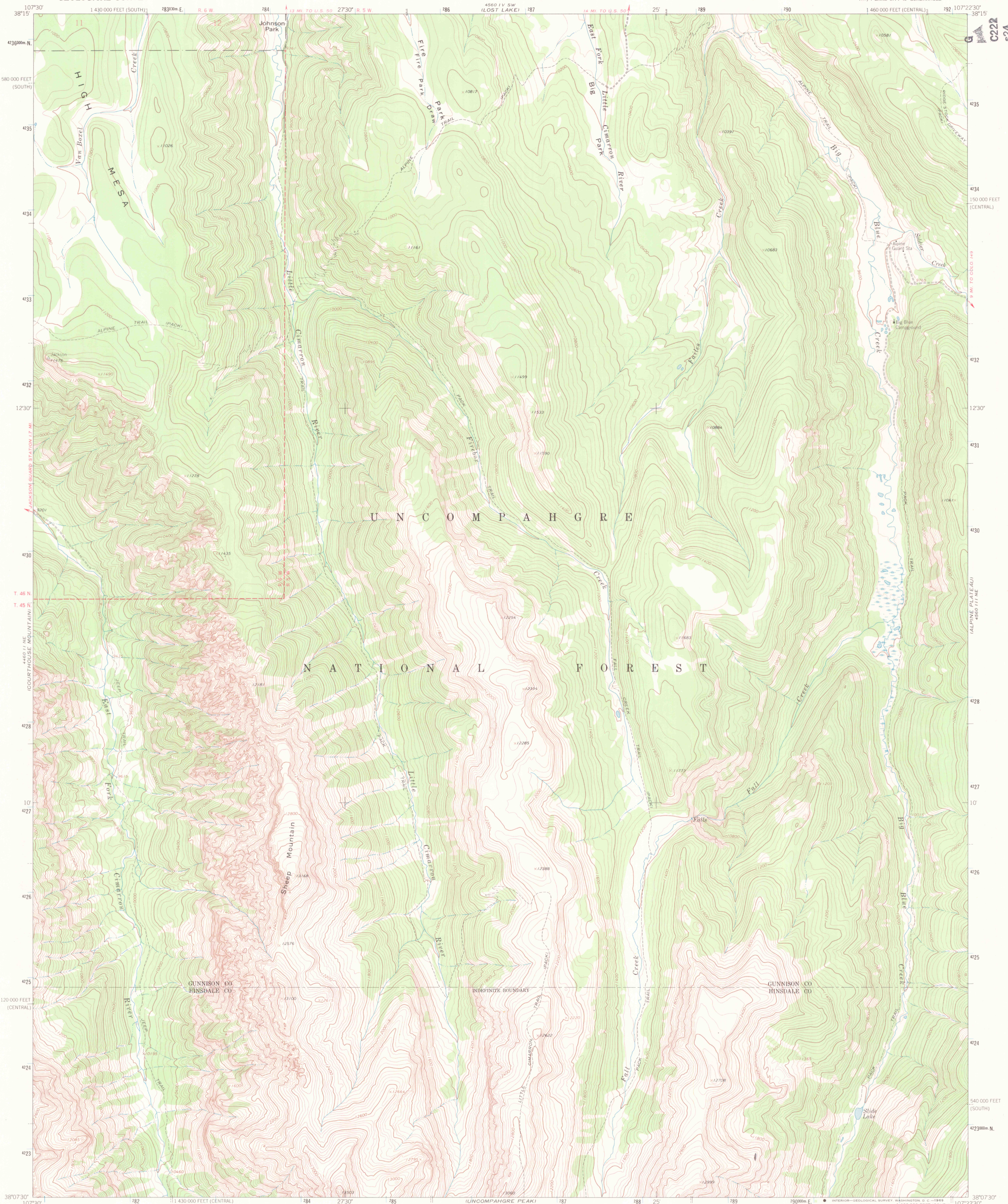


UNITED STATES
DEPARTMENT OF THE INTERIOR
GEOLOGICAL SURVEY

SHEEP MOUNTAIN QUADRANGLE
COLORADO
7.5 MINUTE SERIES (TOPOGRAPHIC)
NW/4 LAKE CITY 15 QUADRANGLE

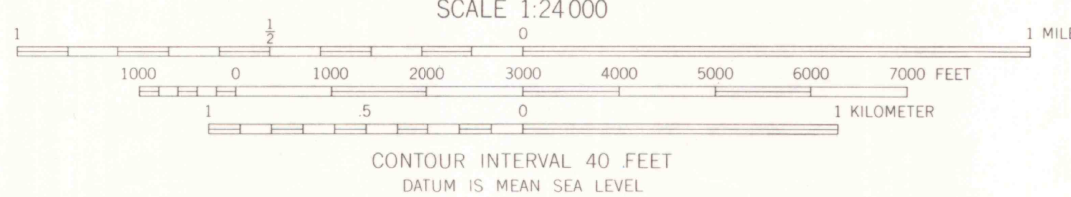
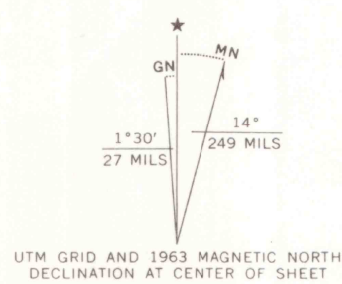


Mapped, edited, and published by the Geological Survey

Control by USGS and USC&GS

Topography by photogrammetric methods from aerial photographs taken 1962. Field checked 1963

Polyconic projection: 1927 North American datum
10,000 foot grids based on Colorado coordinate system, central and south zones
1000 meter Universal Transverse Mercator grid ticks, zone 13, shown in blue
Where omitted, land lines have not been established or are not shown because of insufficient data



ROAD CLASSIFICATION
Light-duty ——— Unimproved dirt ———

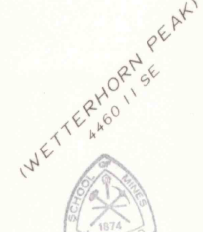
OFFICE COPY
LIBRARY USE ONLY

SHEEP MOUNTAIN, COLO.
NW/4 LAKE CITY 15 QUADRANGLE
N3807.5 - W10722.5/7.5

1963

AMS 4560 III NW - SERIES V877

THIS MAP COMPLIES WITH NATIONAL MAP ACCURACY STANDARDS
FOR SALE BY U.S. GEOLOGICAL SURVEY, DENVER, COLORADO 80225, OR WASHINGTON, D.C. 20242
A FOLDER DESCRIBING TOPOGRAPHIC MAPS AND SYMBOLS IS AVAILABLE ON REQUEST



SEP 3 1979

MAP ROOM

ARTHUR LAKES LIBRARY

G 3700
s24
.G4

MAP ROOM