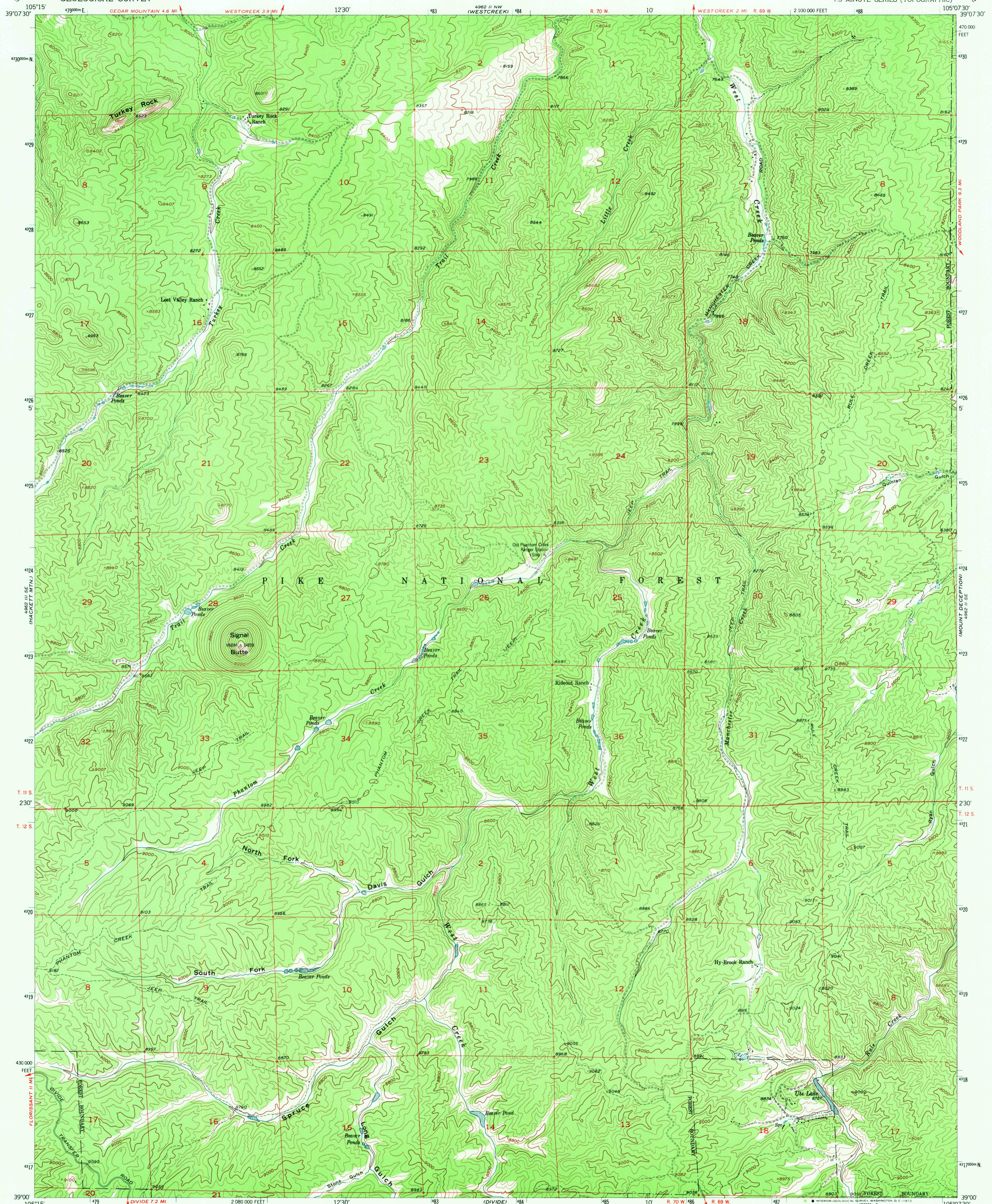


CHEESMAN LAKE

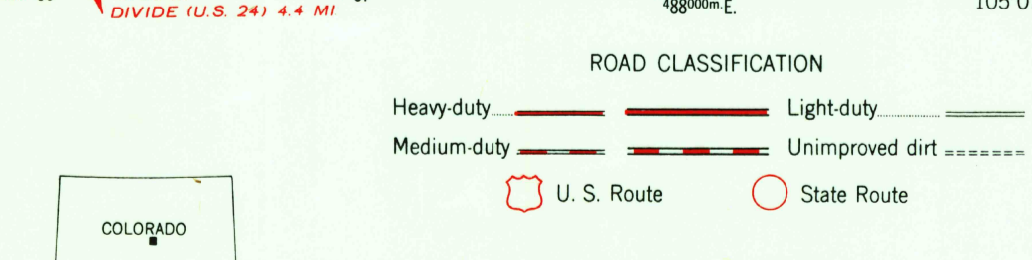
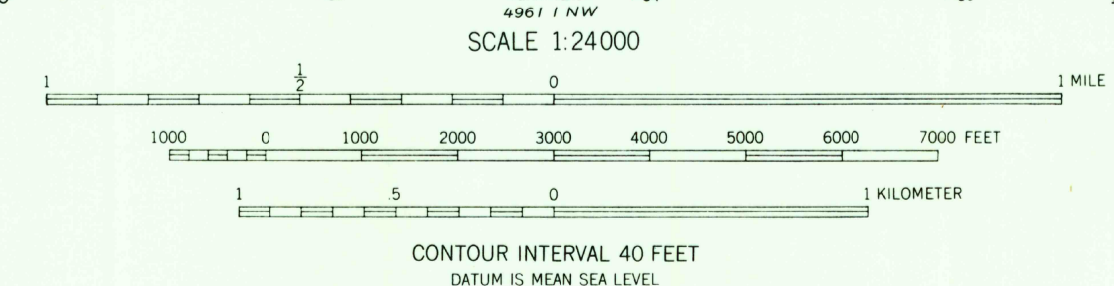
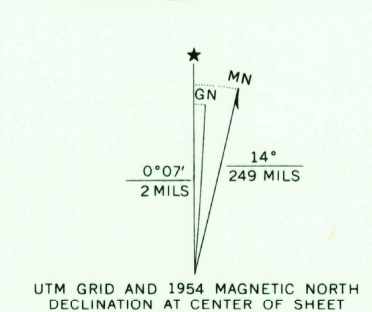
UNITED STATES  
DEPARTMENT OF THE INTERIOR  
GEOLOGICAL SURVEY

SIGNAL BUTTE QUADRANGLE  
COLORADO-TELLER CO.  
7.5 MINUTE SERIES (TOPOGRAPHIC)

WOODLAND PARK



Maped, edited, and published by the Geological Survey  
Control by USGS and USC&GS  
Topography from aerial photographs by multiplex methods  
Aerial photographs taken 1953. Field check 1954  
Polyconic projection. 1927 North American datum  
10,000-foot grid based on Colorado coordinate system,  
central zone  
Dashed land lines indicate approximate locations  
Unchecked elevations are shown in brown and blue  
1000-meter Universal Transverse Mercator grid ticks,  
zone 13, shown in blue



THIS MAP COMPLIES WITH NATIONAL MAP ACCURACY STANDARDS  
FOR SALE BY U. S. GEOLOGICAL SURVEY, DENVER, COLORADO 80225, OR WASHINGTON, D. C. 20242  
A FOLDER DESCRIBING TOPOGRAPHIC MAPS AND SYMBOLS IS AVAILABLE ON REQUEST

USGS  
HISTORICAL FILE  
TOPOGRAPHIC DIVISION

SIGNAL BUTTE, COLO.  
N3900-W10507 5/7.5

1954  
AMS 4962 II SW-SERIES V877

AUG 2 1972

3655