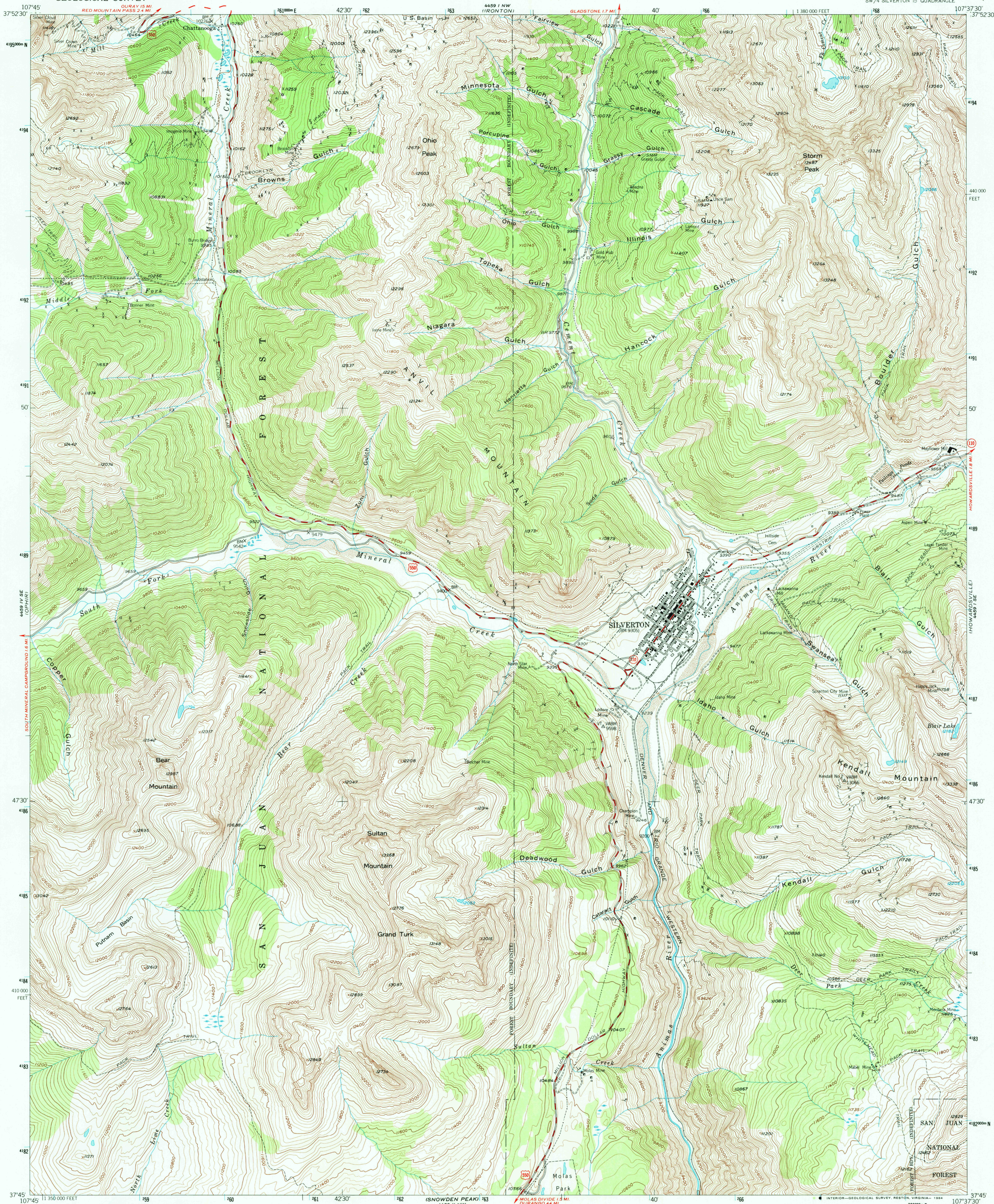


UNITED STATES  
DEPARTMENT OF THE INTERIOR  
GEOLOGICAL SURVEY

SILVERTON QUADRANGLE  
COLORADO-SAN JUAN CO.  
7.5 MINUTE SERIES (TOPOGRAPHIC)  
SW/4 SILVERTON 15 QUADRANGLE



Mapped, edited, and published by the Geological Survey  
Control by USGS and USC&GS

Topography from aerial photographs by multiplex methods  
Aerial photographs taken 1951. Field check 1955

Polyconic projection. 1927 North American Datum  
10,000-foot grid based on Colorado coordinate system,  
south zone

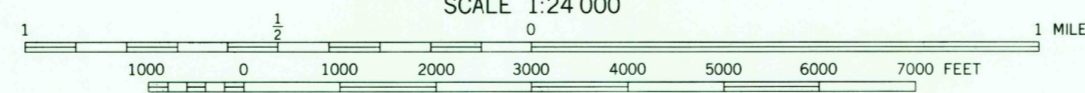
Land lines are omitted in T. 40 N., T. 41 N., and T. 42 N.-R. 7 W. and  
R. 8 W. because of insufficient data

Unchecked elevations are shown in brown

1000-meter Universal Transverse Mercator grid ticks,  
zone 13, shown in blue

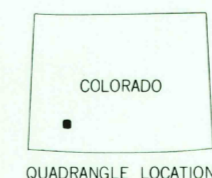
There may be private inholdings within the boundaries of  
the National or State reservations shown on this map

To place on the predicted North American Datum 1983  
move the projection lines 3 meters north and  
55 meters east as shown by dashed corner ticks



CONTOUR INTERVAL 40 FEET  
NATIONAL GEODETIC VERTICAL DATUM OF 1929

THIS MAP COMPLIES WITH NATIONAL MAP ACCURACY STANDARDS  
FOR SALE BY U. S. GEOLOGICAL SURVEY, DENVER, COLORADO 80225, OR RESTON, VIRGINIA 22092  
A FOLDER DESCRIBING TOPOGRAPHIC MAPS AND SYMBOLS IS AVAILABLE ON REQUEST



QUADRANGLE LOCATION

USGS 7.5 MINUTE HISTORICAL MAP

JUL 0 8 1988

REC'D FILE COPY

ROAD CLASSIFICATION  
Medium-duty ——— Light-duty ———  
Unimproved dirt ———  
U. S. Route ——— State Route ———

SILVERTON, COLO.  
SW/4 SILVERTON 15 QUADRANGLE  
37107-G6-TF-024

1955

DMA 4459 I SW-SERIES V877