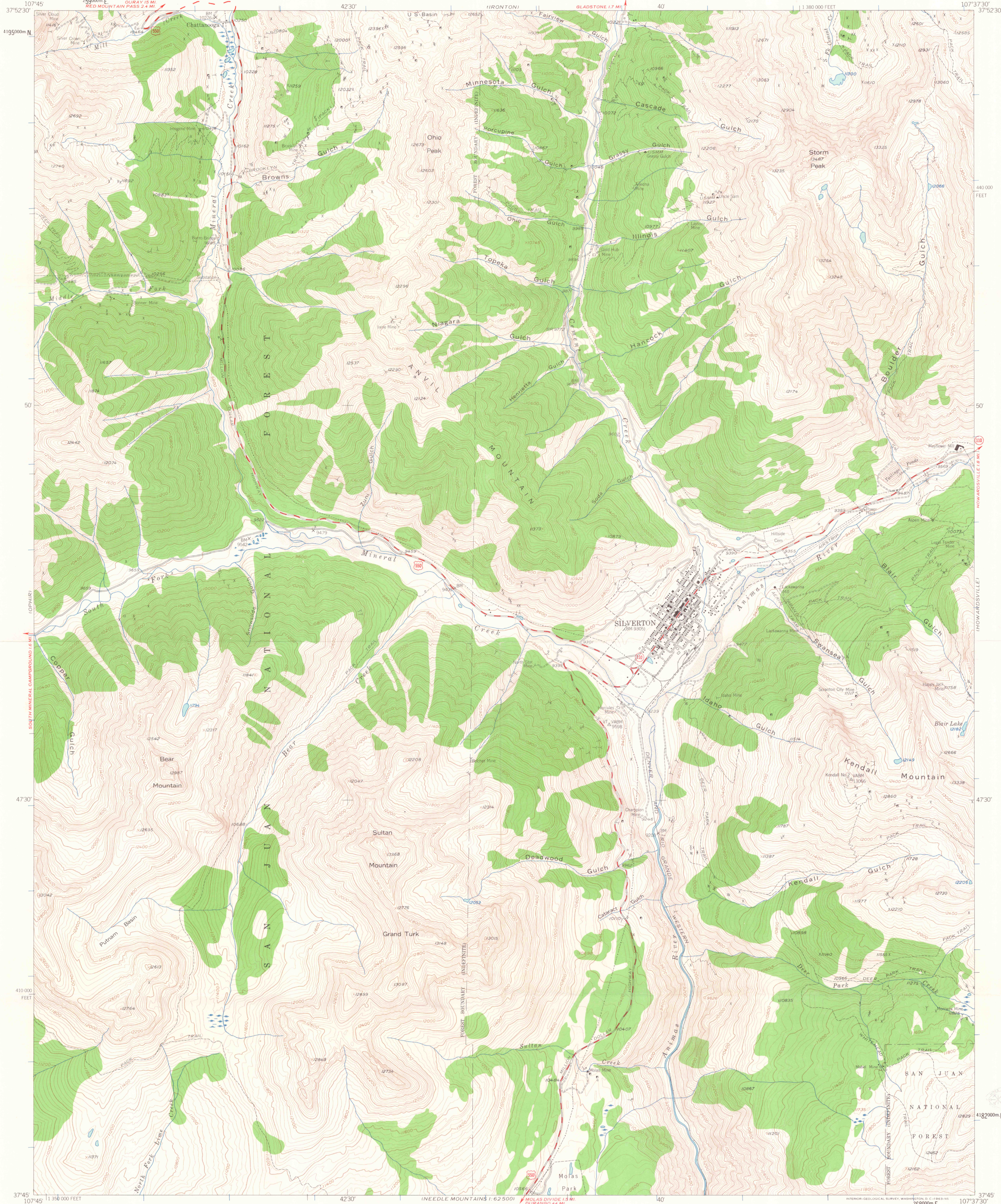
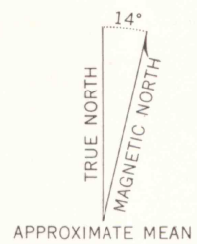


UNITED STATES
DEPARTMENT OF THE INTERIOR
GEOLOGICAL SURVEY

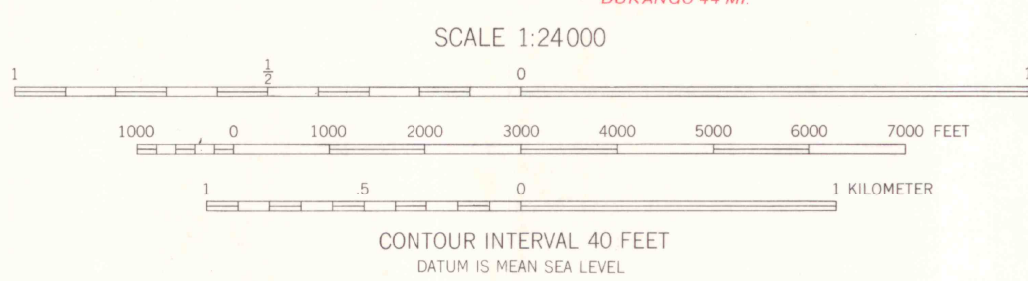
SILVERTON QUADRANGLE
COLORADO-SAN JUAN CO.
7.5 MINUTE SERIES (TOPOGRAPHIC)
SW/4 SILVERTON 15 QUADRANGLE



Maped, edited, and published by the Geological Survey
Control by USGS and USC&GS
Topography from aerial photographs by multiplex methods
Aerial photographs taken 1951. Field check 1955
Polyconic projection, 1927 North American datum
10,000-foot grid based on Colorado coordinate system,
south zone
Land lines are omitted in T. 40 N., T. 41 N., and T. 42 N.-R. 7 W. and
R. 8 W. because of insufficient data
Unchecked elevations are shown in brown
1000-meter Universal Transverse Mercator grid ticks,
zone 13, shown in blue

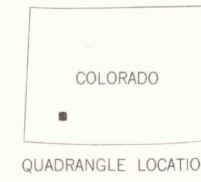


APPROXIMATE MEAN
DECLINATION, 1955



CONTOUR INTERVAL 40 FEET
DATUM IS MEAN SEA LEVEL

THIS MAP COMPLIES WITH NATIONAL MAP ACCURACY STANDARDS
FOR SALE BY U. S. GEOLOGICAL SURVEY, DENVER 25, COLORADO OR WASHINGTON 25, D. C.
A FOLDER DESCRIBING TOPOGRAPHIC MAPS AND SYMBOLS IS AVAILABLE ON REQUEST



ROAD CLASSIFICATION
Medium-duty ——— Light-duty ———
Unimproved dirt ———
U. S. Route ——— State Route ———

SILVERTON, COLO.
SW/4 SILVERTON 15 QUADRANGLE
N3745-W10737.5/7.5

1955

G 3700
124
24
ROOM

SEP 26 2003

ARTHUR LINES LIBRARY
COLORADO SCHOOL OF MINES