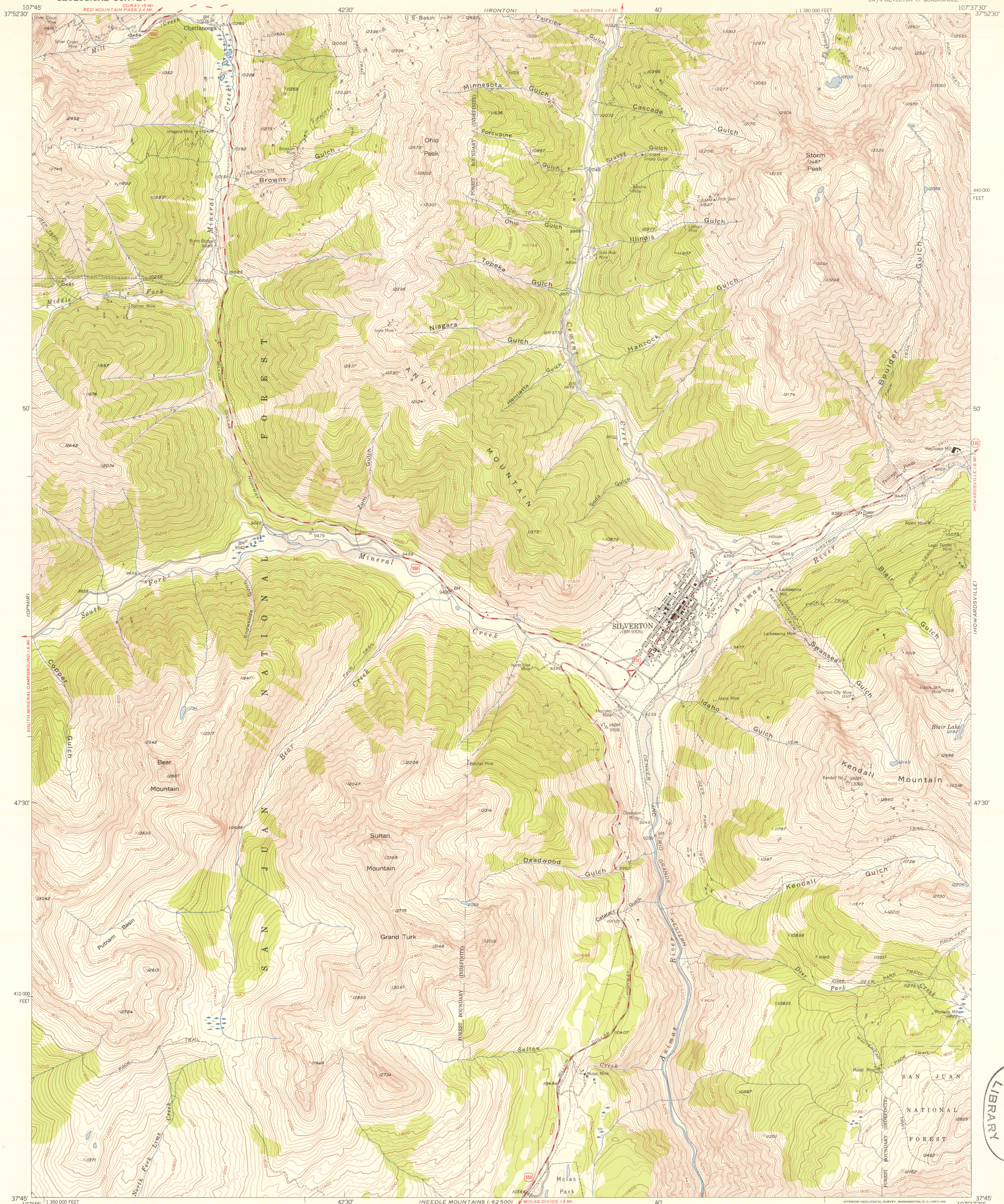


UNITED STATES
DEPARTMENT OF THE INTERIOR
GEOLOGICAL SURVEY

SILVERTON QUADRANGLE
COLORADO-SAN JUAN CO.
7.5 MINUTE SERIES (TOPOGRAPHIC)
SW 1/4 SILVERTON 15' QUADRANGLE



Mapped, edited, and published by the Geological Survey

Control by USGS and USC&GS

Topography from aerial photographs by multiplex methods

Aerial photographs taken 1951. Field check 1955

Polyconic projection. 1927 North American datum

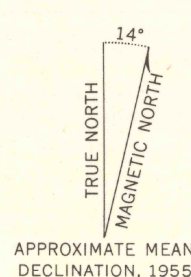
10,000-foot grid based on Colorado coordinate system,

south zone

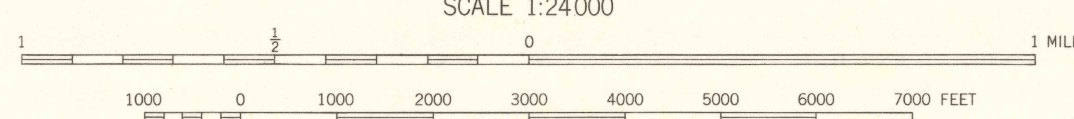
Land lines are omitted in T. 40 N., T. 41 N., and T. 42 N.-R. 7 W. and

R. 8 W. because of insufficient data

Unchecked elevations are shown in brown



APPROXIMATE MEAN
DECLINATION, 1955



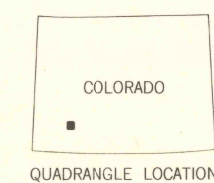
SCALE 1:24,000

CONTOUR INTERVAL 40 FEET

DATUM IS MEAN SEA LEVEL

THIS MAP COMPLIES WITH NATIONAL MAP ACCURACY STANDARDS

FOR SALE BY U.S. GEOLOGICAL SURVEY, DENVER 2, COLORADO OR WASHINGTON 25, D.C.
A FOLDER DESCRIBING TOPOGRAPHIC MAPS AND SYMBOLS IS AVAILABLE ON REQUEST



QUADRANGLE LOCATION

ROAD CLASSIFICATION

Medium-duty ——— Light-duty ———

Unimproved dirt ———

U.S. Route ——— State Route ———

SILVERTON, COLO.
SW 1/4 SILVERTON 15' QUADRANGLE
N3745-W10737.5/7.5

1955

